

Doc. Number :

- Tentative Specification
- Preliminary Specification
- Approval Specification

MODEL NO.: M270HGE
SUFFIX: L30

Customer:	
APPROVED BY	SIGNATURE
Name / Title _____	_____
Note Product Version C4	
<p>_____</p> <p>Please return 1 copy for your confirmation with your signature and comments.</p>	

Approved By	Checked By	Prepared By
阮泰郎	陳立錚	葉紅雨

CONTENTS

1. GENERAL DESCRIPTION	5
1.1 OVERVIEW	5
1.2 GENERAL SPECIFICATIONS	5
2. MECHANICAL SPECIFICATIONS	5
3. ABSOLUTE MAXIMUM RATINGS	6
3.1 ABSOLUTE RATINGS OF ENVIRONMENT	6
3.2 ELECTRICAL ABSOLUTE RATINGS	6
3.2.1 TFT LCD MODULE	6
3.2.2 BACKLIGHT UNIT	7
4. ELECTRICAL SPECIFICATIONS	7
4.1 FUNCTION BLOCK DIAGRAM	7
4.2. INTERFACE CONNECTIONS	8
4.3 ELECTRICAL CHARACTERISTICS	9
4.3.1 LCD ELETRONICS SPECIFICATION	9
4.3.2 VCC POWER DIP CONDITION	12
4.3.3 BACKLIGHT UNIT	12
4.3.4 LIGHTBAR CONNECTOR PIN ASSIGNMENT	13
4.4 LVDS INPUT SIGNAL SPECIFICATIONS	14
4.4.1 LVDS DATA MAPPING TABLE	14
4.4.2 COLOR DATA INPUT ASSIGNMENT	15
4.5 DISPLAY TIMING SPECIFICATIONS	16
4.6 POWER ON/OFF SEQUENCE	18
5. OPTICAL CHARACTERISTICS	19
5.1 TEST CONDITIONS	19
5.2 OPTICAL SPECIFICATIONS	19
6. RELIABILITY TEST ITEM	22
7. MECHANICAL STRENGTH CHARACTERISTICS	23
7.1 MECHANICAL STRENGTH SPECIFICATIONS	23
7.2 TEST CONDITIONS	23
7.3 DEFINITION OF TEST POINTS	23
8. PACKING	24
8.1 PACKING SPECIFICATIONS	24
8.2 PACKING METHOD	24
8.3 PALLET	25
8.4 UN-PACKING METHOD	26

9. INX MODULE LABEL	27
10. PRECAUTIONS	28
10.1 ASSEMBLY AND HANDLING PRECAUTIONS	28
10.2 STORAGE PRECAUTIONS	28
10.3 OPERATION PRECAUTIONS	28
10.4 SAFETY PRECAUTIONS	29
10.5 SAFETY STANDARDS	29
10.6 OTHER	29
Appendix 1. SYSTEM COVER DESIGN NOTICE	30
Appendix 2. OUTLINE DRAWING	33

REVISION HISTORY

Version	Date	Page	Description																																																																												
3.0	Sep.06, 2013	All	Approval Spec Ver.3.0 was first issued.																																																																												
3.1	Apr.28,2015	16	Revise 4.5 Vtotal Max 1136-->1250																																																																												
		18	Revise 4.6 T2 Values 0~50ms → 50~100ms																																																																												
3.2	Dec.14,2015	1	Revise Product Version C1/C2→C4																																																																												
		12	<p>Backlight unit Power Consumption change to ES7.0 solution.</p> <p>Original:</p> <p>4.3.3 BACKLIGHT UNIT</p> <table border="1"> <thead> <tr> <th rowspan="2">Parameter</th> <th rowspan="2">Symbol</th> <th colspan="3">Value</th> <th rowspan="2">Unit</th> <th rowspan="2">Note</th> </tr> <tr> <th>Min.</th> <th>Typ.</th> <th>Max.</th> </tr> </thead> <tbody> <tr> <td>LED Light Bar Input Voltage Per Input Pin</td> <td>VPIN</td> <td></td> <td>55.8</td> <td>60.3</td> <td>V</td> <td>(1), Duty=100%, IPIN=85mA</td> </tr> <tr> <td>LED Light Bar Current Per Input Pin</td> <td>IPIN</td> <td></td> <td>85</td> <td>89</td> <td>mA</td> <td>(1), (2) Duty=100%</td> </tr> <tr> <td>LED Life Time</td> <td>LLED</td> <td>40000</td> <td></td> <td></td> <td>Hrs</td> <td>(3)</td> </tr> <tr> <td>Power Consumption</td> <td>PBL</td> <td></td> <td>18.97</td> <td>20.5</td> <td>W</td> <td>(1) Duty=100%, IPIN=85mA</td> </tr> </tbody> </table> <p>Change to:</p> <table border="1"> <thead> <tr> <th rowspan="2">Parameter</th> <th rowspan="2">Symbol</th> <th colspan="3">Value</th> <th rowspan="2">Unit</th> <th rowspan="2">Note</th> </tr> <tr> <th>Min.</th> <th>Typ.</th> <th>Max.</th> </tr> </thead> <tbody> <tr> <td>LED Light Bar Input Voltage Per Input Pin</td> <td>VPIN</td> <td>44.2</td> <td>47.6</td> <td>51</td> <td>V</td> <td>(1), Duty=100%, IPIN=75mA</td> </tr> <tr> <td>LED Light Bar Current Per Input Pin</td> <td>IPIN</td> <td></td> <td>75</td> <td>80</td> <td>mA</td> <td>(1), (2) Duty=100%</td> </tr> <tr> <td>LED Life Time</td> <td>LLED</td> <td>40000</td> <td></td> <td></td> <td>Hrs</td> <td>(3)</td> </tr> <tr> <td>Power Consumption</td> <td>PBL</td> <td>13.26</td> <td>14.28</td> <td>15.3</td> <td>W</td> <td>(1) Duty=100%, IPIN=75mA</td> </tr> </tbody> </table>	Parameter	Symbol	Value			Unit	Note	Min.	Typ.	Max.	LED Light Bar Input Voltage Per Input Pin	VPIN		55.8	60.3	V	(1), Duty=100%, IPIN=85mA	LED Light Bar Current Per Input Pin	IPIN		85	89	mA	(1), (2) Duty=100%	LED Life Time	LLED	40000			Hrs	(3)	Power Consumption	PBL		18.97	20.5	W	(1) Duty=100%, IPIN=85mA	Parameter	Symbol	Value			Unit	Note	Min.	Typ.	Max.	LED Light Bar Input Voltage Per Input Pin	VPIN	44.2	47.6	51	V	(1), Duty=100%, IPIN=75mA	LED Light Bar Current Per Input Pin	IPIN		75	80	mA	(1), (2) Duty=100%	LED Life Time	LLED	40000			Hrs	(3)	Power Consumption	PBL	13.26	14.28	15.3	W	(1) Duty=100%, IPIN=75mA
Parameter	Symbol	Value				Unit	Note																																																																								
		Min.	Typ.	Max.																																																																											
LED Light Bar Input Voltage Per Input Pin	VPIN		55.8	60.3	V	(1), Duty=100%, IPIN=85mA																																																																									
LED Light Bar Current Per Input Pin	IPIN		85	89	mA	(1), (2) Duty=100%																																																																									
LED Life Time	LLED	40000			Hrs	(3)																																																																									
Power Consumption	PBL		18.97	20.5	W	(1) Duty=100%, IPIN=85mA																																																																									
Parameter	Symbol	Value			Unit	Note																																																																									
		Min.	Typ.	Max.																																																																											
LED Light Bar Input Voltage Per Input Pin	VPIN	44.2	47.6	51	V	(1), Duty=100%, IPIN=75mA																																																																									
LED Light Bar Current Per Input Pin	IPIN		75	80	mA	(1), (2) Duty=100%																																																																									
LED Life Time	LLED	40000			Hrs	(3)																																																																									
Power Consumption	PBL	13.26	14.28	15.3	W	(1) Duty=100%, IPIN=75mA																																																																									
3.3	Dec.15,2016	5	Revise TCO6.0 → TCO7.0																																																																												
			Add Color Gamut Spec																																																																												
			Revise BL Power Consumption 16.32W(Typ.) →14.28W(Typ.)																																																																												

1. GENERAL DESCRIPTION

1.1 OVERVIEW

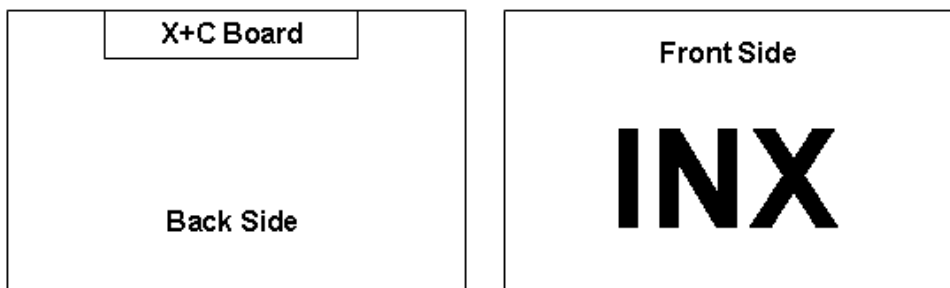
M270HGE-L30 is a 27.0" TFT Liquid Crystal Display MNT module with WLED Backlight unit and 30 pins 2ch-LVDS interface. This module supports 1920 x 1080 Full HD mode and can display up to 16.7M colors. The converter module for Backlight is not built in.

1.2 GENERAL SPECIFICATIONS

Item	Specification	Unit	Note
Screen Size	597.89 (H) X 336.31 (V), (27.0 inch Diagonal)	mm	
Driver Element	a-si TFT active matrix	-	-
Pixel Number	1920 x R.G.B. x 1080	pixel	-
Pixel Pitch	0.3114 (H) x 0.3114 (V)	mm	-
Pixel Arrangement	RGB vertical stripe	-	-
Display Colors	16.7M	color	-
Transmissive Mode	Normally white	-	-
Surface Treatment	AG type, 3H hard coating, Haze 25	-	-
Luminance, White	300	Cd/m2	
Color Gamut	72% of NTSC(Typ.)		
RoHS, Halogen Free & TCO	RoHS, Halogen Free TCO 7.0 compliance		
Power Consumption	Total 20.38W(Typ.) @ cell 6.1W(Max.), BL 14.28W(Typ.)		(1)

Note (1) The specified power consumption : Total= cell (reference 4.3.1)+BL (reference 4.3.3)

Note (2)



2. MECHANICAL SPECIFICATIONS

Item	Min.	Typ.	Max.	Unit	Note	
Module Size	Horizontal (H)	629.5	630.0	630.5	mm	(1)
	Vertical (V)	367.7	368.2	368.7	mm	
	Thickness (T)	13.6	14.1	14.6	mm	
Bezel Area	Horizontal	603.4	603.9	604.4	mm	
	Vertical	341.8	342.3	342.8	mm	
Active Area	Horizontal	-	597.89	-	mm	
	Vertical	-	336.31	-	mm	
Weight	2460	2530	2600	g		

Note (1) Please refer to the attached drawings for more information of front and back outline dimensions.

3. ABSOLUTE MAXIMUM RATINGS

3.1 ABSOLUTE RATINGS OF ENVIRONMENT

Item	Symbol	Value		Unit	Note
		Min.	Max.		
Storage Temperature	TST	-20	60	°C	(1)
Operating Ambient Temperature	TOP	0	50	°C	(1), (2)

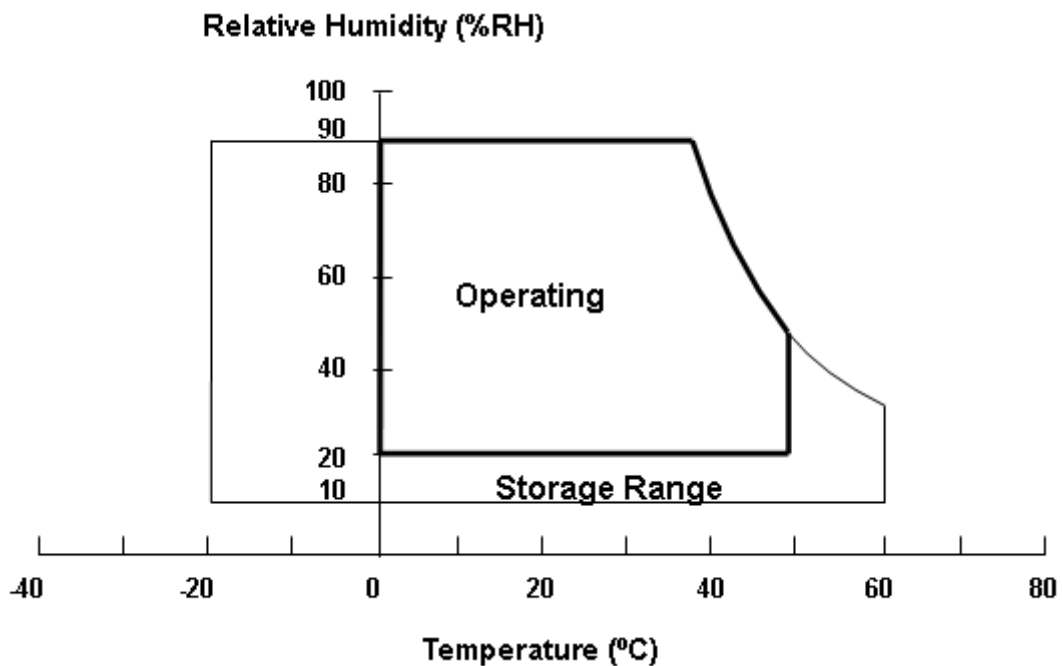
Note (1)

(a) 90 %RH Max.

(b) Wet-bulb temperature should be 39 °C Max.

(c) No condensation.

Note (2) Panel surface temperature should be 0°C min. and 65°C max under Vcc=5.0V, fr =60Hz, typical LED string current, 25°C ambient temperature, and no humidity control . Any condition of ambient operating temperature ,the surface of active area should be keeping not higher than 65°C .



3.2 ELECTRICAL ABSOLUTE RATINGS

3.2.1 TFT LCD MODULE

Item	Symbol	Value		Unit	Note
		Min.	Max.		
Power Supply Voltage	VCCS	-0.3	6.0	V	(1)
Logic Input Voltage	VIN	-0.3	3.6	V	

3.2.2 BACKLIGHT UNIT

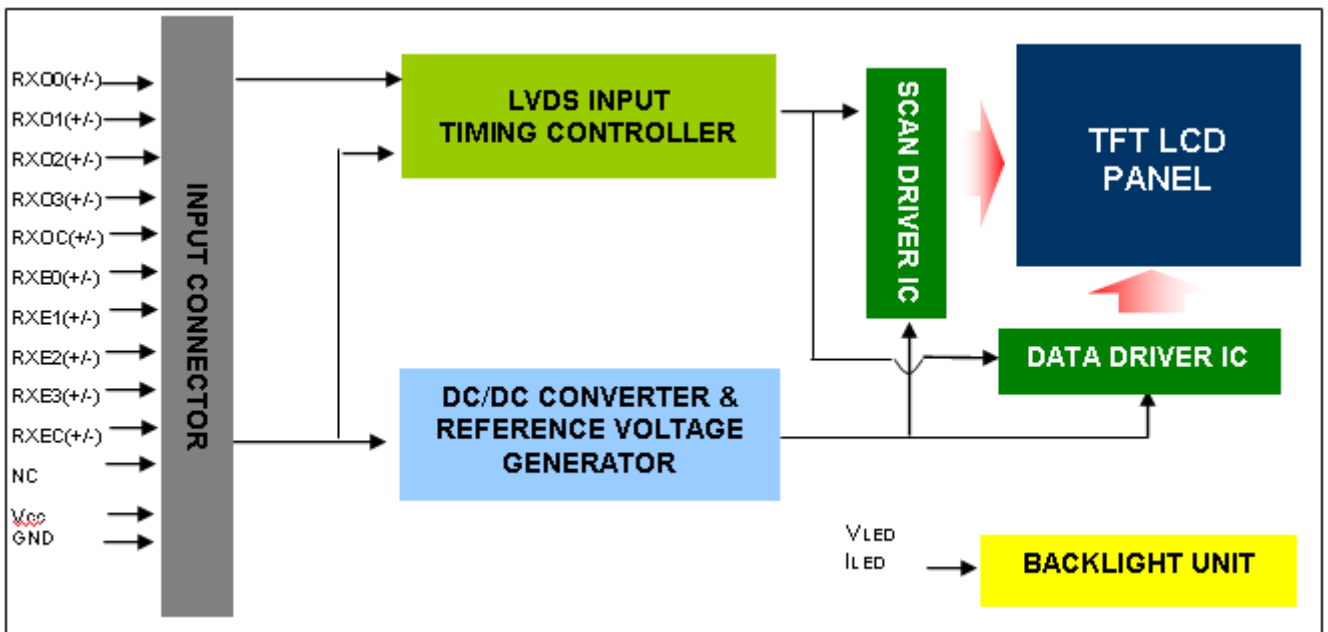
Item	Symbol	Value			Unit	Note
		Min.	Typ	Max.		
LED Forward Current Per Input Pin	IF		75	80	mA	(1), (2) Duty=100%
LED Pulse Forward Current Per Input Pin	IP			570	mA	(1), (2) Pulse Width \leq 10msec. and Duty \leq 10%

Note (1) Permanent damage to the device may occur if maximum values are exceeded. Function operation should be restricted to the conditions described under Normal Operating Conditions.

Note (2) Specified values are for input pin of LED light bar at $T_a=25\pm 2$ °C (Refer to 4.3.3 and 4.3.4 for further information).

4. ELECTRICAL SPECIFICATIONS

4.1 FUNCTION BLOCK DIAGRAM



4.2. INTERFACE CONNECTIONS

PIN ASSIGNMENT

Pin	Name	Description
1	RXO0-	Negative LVDS differential data input. Channel O0 (odd)
2	RXO0+	Positive LVDS differential data input. Channel O0 (odd)
3	RXO1-	Negative LVDS differential data input. Channel O1 (odd)
4	RXO1+	Positive LVDS differential data input. Channel O1 (odd)
5	RXO2-	Negative LVDS differential data input. Channel O2 (odd)
6	RXO2+	Positive LVDS differential data input. Channel O2 (odd)
7	GND	Ground
8	RXOC-	Negative LVDS differential clock input. (odd)
9	RXOC+	Positive LVDS differential clock input. (odd)
10	RXO3-	Negative LVDS differential data input. Channel O3(odd)
11	RXO3+	Positive LVDS differential data input. Channel O3 (odd)
12	RXE0-	Negative LVDS differential data input. Channel E0 (even)
13	RXE0+	Positive LVDS differential data input. Channel E0 (even)
14	GND	Ground
15	RXE1-	Negative LVDS differential data input. Channel E1 (even)
16	RXE1+	Positive LVDS differential data input. Channel E1 (even)
17	GND	Ground
18	RXE2-	Negative LVDS differential data input. Channel E2 (even)
19	RXE2+	Positive LVDS differential data input. Channel E2 (even)
20	RXEC-	Negative LVDS differential clock input. (even)
21	RXEC+	Positive LVDS differential clock input. (even)
22	RXE3-	Negative LVDS differential data input. Channel E3 (even)
23	RXE3+	Positive LVDS differential data input. Channel E3 (even)
24	GND	Ground
25	NC	For LCD internal use only, Do not connect
26	NC	For LCD internal use only, Do not connect
27	NC	For LCD internal use only, Do not connect
28	Vcc	+5.0V power supply
29	Vcc	+5.0V power supply
30	Vcc	+5.0V power supply

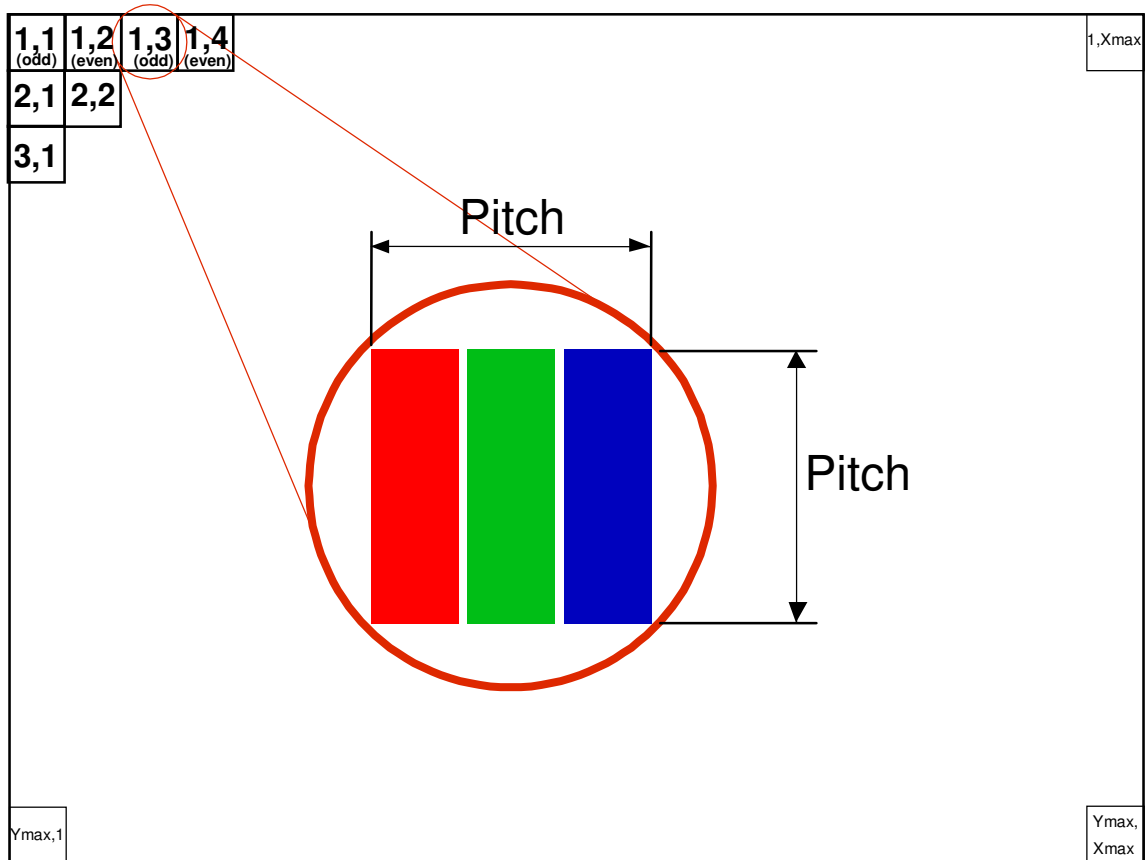
Connector Information

Item	Description
Manufacturer	P-TWO / Foxconn
Type part number	P-TWO: 187114-30091 Foxconn: GS23301-1321S-7H
User's Mating housing part number	JAE: FI-X30HL() Foxconn: WM13-011-3050

*Notice: There would be compatible issues if not using the indicated connectors in the matching list.

Note (1) The first pixel is odd.

Note (2) Input signal of even and odd clock should be the same timing.



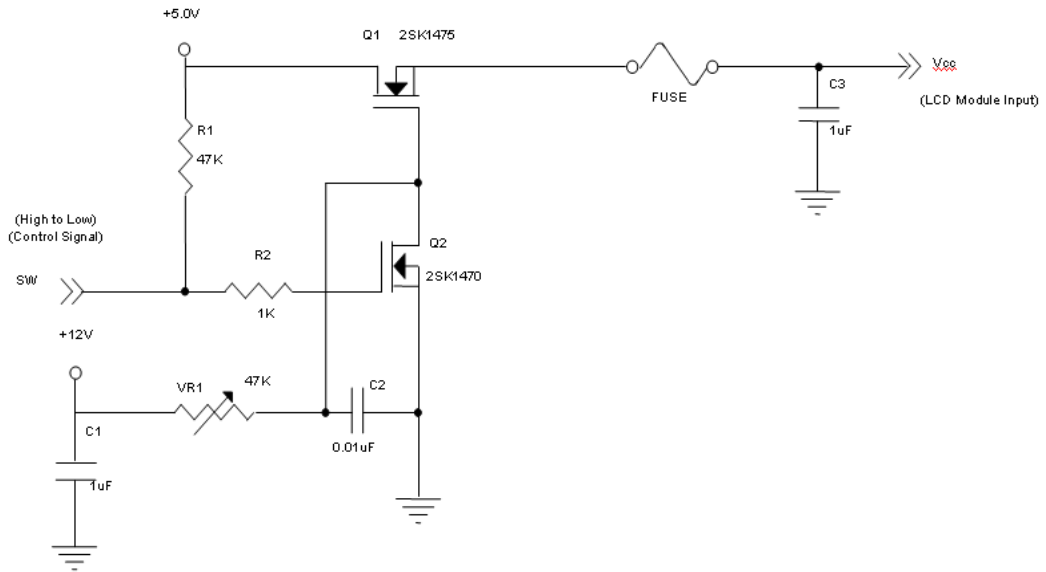
4.3 ELECTRICAL CHARACTERISTICS

4.3.1 LCD ELETRONICS SPECIFICATION

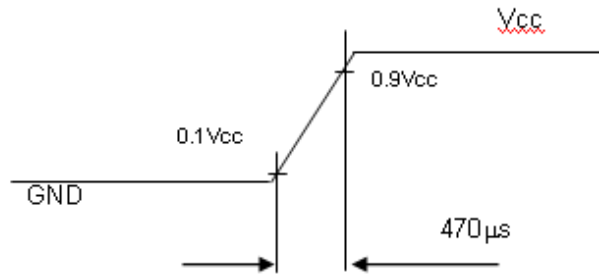
Parameter	Symbol	Value			Unit	Note	
		Min.	Typ.	Max.			
Power Supply Voltage	V _{CC}	4.5	5.0	5.5	V	-	
Ripple Voltage	V _{RP}			300	mV	-	
Rush Current	I _{RUSH}			3	A	(2)	
Power Supply Current	White		0.46	0.51	A	(3)a	
	Black		1.08	1.22	A	(3)b	
	Vertical Stripe		1.03	1.16	A	(3)c	
Power Consumption	PLCD		5.4	6.1	Watt	(4)	
LVDS interface	Differential Input Voltage	V _{ID}	100	-	600	mV	
	Common Input Voltage	V _{CM}	1.0	1.2	1.4	V	
	Differential Input High Threshold Voltage	V _{TH}	-	-	+100	mV	
	Differential Input Low Threshold Voltage	V _{TL}	-100	-	-	mV	

Note (1) The ambient temperature is $T_a = 25 \pm 2$ °C.

Note (2) Measurement Conditions:



Vcc rising time is 470 μ s



Note (3) The specified power supply current is under the conditions at $V_{cc} = 5.0\text{ V}$, $T_a = 25 \pm 2\text{ }^\circ\text{C}$, $F_r = 60\text{ Hz}$, whereas a power dissipation check pattern below is displayed.

a. White Pattern



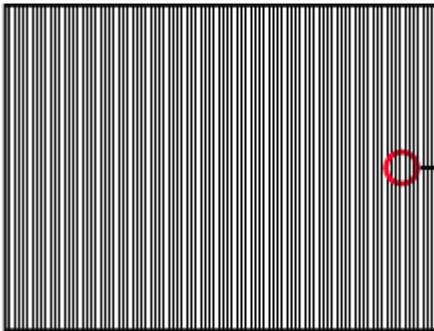
Active Area

b. Black Pattern

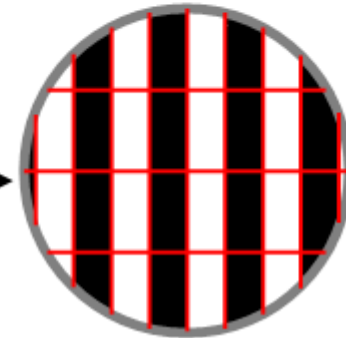


Active Area

c. Vertical Stripe Pattern

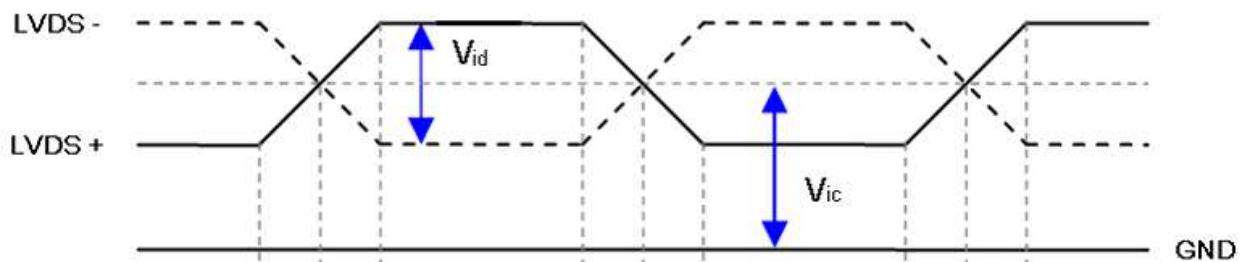


Active Area

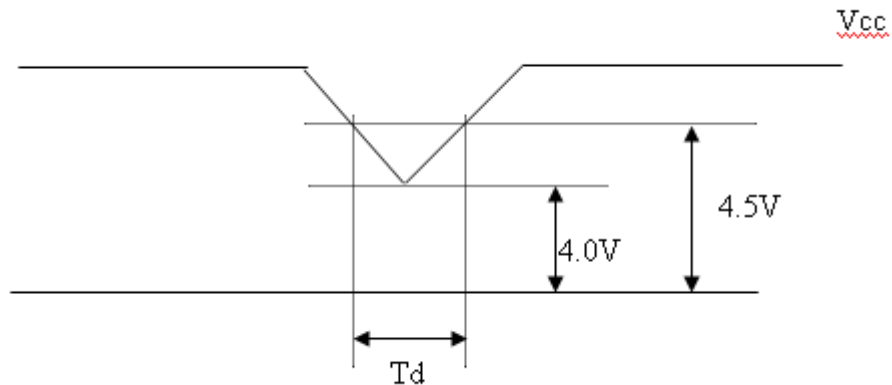


Note (4) The power consumption is specified at the pattern with the maximum current.

Note (5) VID waveform condition



4.3.2 VCC POWER DIP CONDITION



Dip condition: $4.0 \leq V_{CC} \leq 4.5$, $T_d \leq 20\text{ms}$

4.3.3 BACKLIGHT UNIT

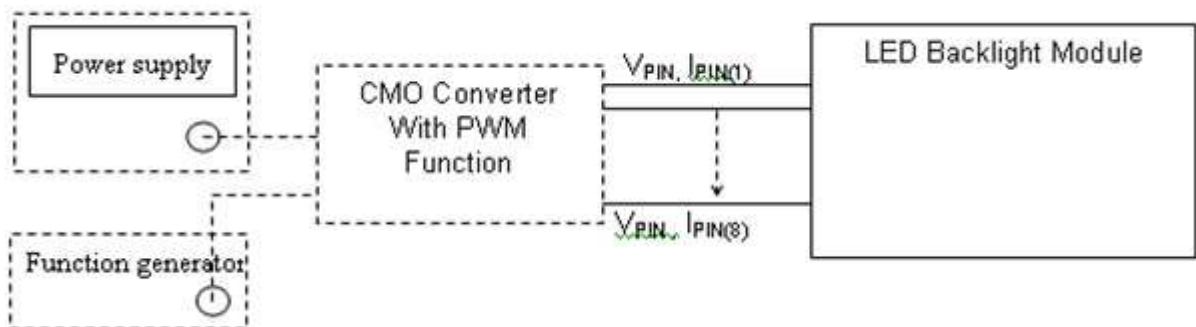
Parameter	Symbol	Value			Unit	Note
		Min.	Typ.	Max.		
LED Light Bar Input Voltage Per Input Pin	VPIN	44.2	47.6	51	V	(1), Duty=100%, IPIN=75mA
LED Light Bar Current Per Input Pin	IPIN		75	80	mA	(1), (2) Duty=100%
LED Life Time	LLED	40000			Hrs	(3)
Power Consumption	PBL	13.26	14.28	15.3	W	(1) Duty=100%, IPIN=75mA

Note (1) LED light bar input voltage and current are measured by utilizing a true RMS multimeter as shown below:

Note (2) $PBL = IPIN \times VPIN \times (4) \text{ input pins}$.

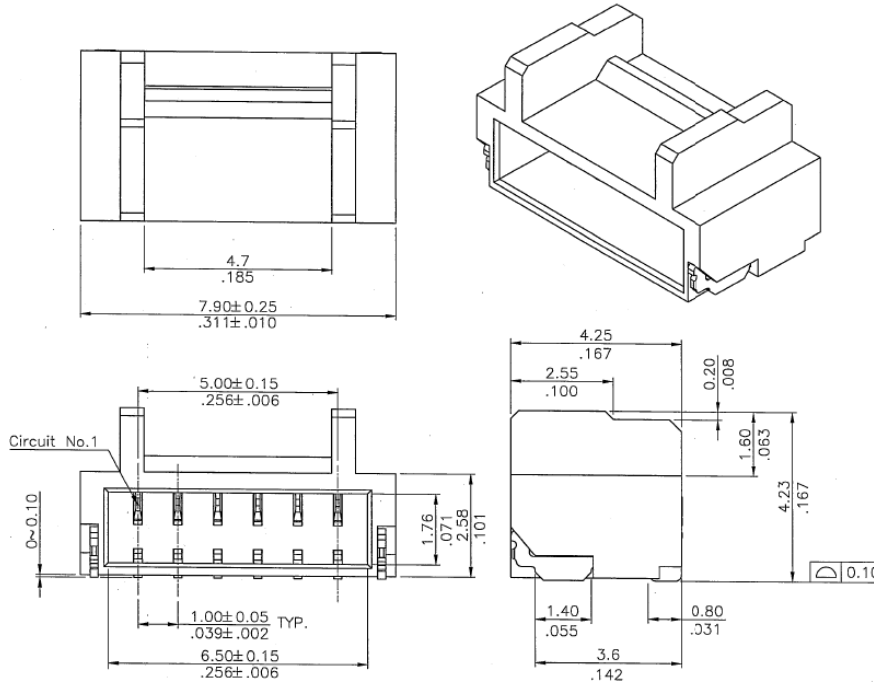
Note (3) The lifetime of LED is defined as the time when LED packages continue to operate under the conditions at $T_a = 25 \pm 2 \text{ }^\circ\text{C}$ and $I = (75)\text{mA}$ (per chip) until the brightness becomes $\leq 50\%$ of its original value.

Note (4) The module must be operated with constant driving current.



4.3.4 LIGHTBAR CONNECTOR PIN ASSIGNMENT

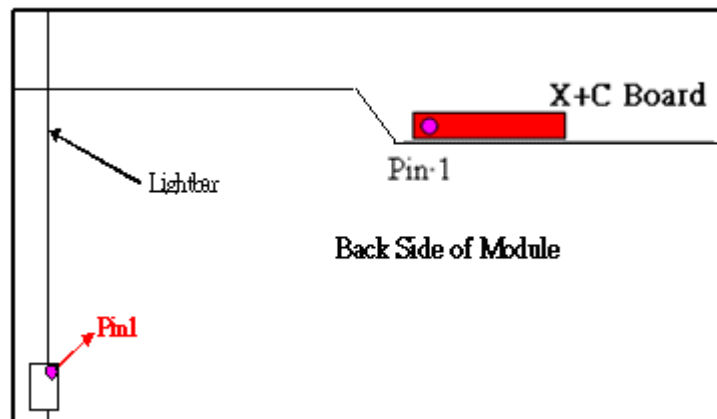
Connector: WM13-406-063N(FCN), CI1406M1HRK-NH(CVILUX).



CN1

Pin number	Description
1	Cathode of LED string
2	Cathode of LED string
3	VLED
4	VLED
5	Cathode of LED string
6	Cathode of LED string

Note (1) User' s Mating Connector Part No.: CI1406SL000-NH (CviLux) or Compatible.



4.4 LVDS INPUT SIGNAL SPECIFICATIONS

4.4.1 LVDS DATA MAPPING TABLE

LVDS Channel O0	LVDS output	D7	D6	D4	D3	D2	D1	D0
	Data order	OG0	OR5	OR4	OR3	OR2	OR1	OR0
LVDS Channel O1	LVDS output	D18	D15	D14	D13	D12	D9	D8
	Data order	OB1	OB0	OG5	OG4	OG3	OG2	OG1
LVDS Channel O2	LVDS output	D26	D25	D24	D22	D21	D20	D19
	Data order	DE	NA	NA	OB5	OB4	OB3	OB2
LVDS Channel O3	LVDS output	D23	D17	D16	D11	D10	D5	D27
	Data order	NA	OB7	OB6	OG7	OG6	OR7	OR6
LVDS Channel E0	LVDS output	D7	D6	D4	D3	D2	D1	D0
	Data order	EG0	ER5	ER4	ER3	ER2	ER1	ER0
LVDS Channel E1	LVDS output	D18	D15	D14	D13	D12	D9	D8
	Data order	EB1	EB0	EG5	EG4	EG3	EG2	EG1
LVDS Channel E2	LVDS output	D26	D25	D24	D22	D21	D20	D19
	Data order	DE	NA	NA	EB5	EB4	EB3	EB2
LVDS Channel E3	LVDS output	D23	D17	D16	D11	D10	D5	D27
	Data order	NA	EB7	EB6	EG7	EG6	ER7	ER6

4.4.2 COLOR DATA INPUT ASSIGNMENT

The brightness of each primary color (red, green and blue) is based on the 8-bit gray scale data input for the color. The higher the binary input, the brighter the color. The table below provides the assignment of color versus data input.

Color		Data Signal																							
		Red								Green								Blue							
		R7	R6	R5	R4	R3	R2	R1	R0	G7	G6	G5	G4	G3	G2	G1	G0	B7	B6	B5	B4	B3	B2	B1	B0
Basic Colors	Black	0	0	0	0	0	0	0	0	0	0	0	0	0	0	0	0	0	0	0	0	0	0	0	0
	Red	1	1	1	1	1	1	1	1	0	0	0	0	0	0	0	0	0	0	0	0	0	0	0	0
	Green	0	0	0	0	0	0	0	0	1	1	1	1	1	1	1	1	0	0	0	0	0	0	0	0
	Blue	0	0	0	0	0	0	0	0	0	0	0	0	0	0	0	0	1	1	1	1	1	1	1	1
	Cyan	0	0	0	0	0	0	0	0	1	1	1	1	1	1	1	1	1	1	1	1	1	1	1	1
	Magenta	1	1	1	1	1	1	1	1	0	0	0	0	0	0	0	0	1	1	1	1	1	1	1	1
	Yellow	1	1	1	1	1	1	1	1	1	1	1	1	1	1	1	1	0	0	0	0	0	0	0	0
	White	1	1	1	1	1	1	1	1	1	1	1	1	1	1	1	1	1	1	1	1	1	1	1	1
Gray Scale Of Red	Red(0) / Dark	0	0	0	0	0	0	0	0	0	0	0	0	0	0	0	0	0	0	0	0	0	0	0	
	Red(1)	0	0	0	0	0	0	0	1	0	0	0	0	0	0	0	0	0	0	0	0	0	0	0	
	Red(2)	0	0	0	0	0	0	1	0	0	0	0	0	0	0	0	0	0	0	0	0	0	0	0	
	⋮	⋮	⋮	⋮	⋮	⋮	⋮	⋮	⋮	⋮	⋮	⋮	⋮	⋮	⋮	⋮	⋮	⋮	⋮	⋮	⋮	⋮	⋮	⋮	
	⋮	⋮	⋮	⋮	⋮	⋮	⋮	⋮	⋮	⋮	⋮	⋮	⋮	⋮	⋮	⋮	⋮	⋮	⋮	⋮	⋮	⋮	⋮	⋮	
	Red(253)	1	1	1	1	1	1	0	1	0	0	0	0	0	0	0	0	0	0	0	0	0	0	0	
	Red(254)	1	1	1	1	1	1	1	0	0	0	0	0	0	0	0	0	0	0	0	0	0	0	0	
	Red(255)	1	1	1	1	1	1	1	1	0	0	0	0	0	0	0	0	0	0	0	0	0	0	0	
Gray Scale Of Green	Green(0) / Dark	0	0	0	0	0	0	0	0	0	0	0	0	0	0	0	0	0	0	0	0	0	0	0	
	Green(1)	0	0	0	0	0	0	0	0	0	0	0	0	0	0	1	0	0	0	0	0	0	0	0	
	Green(2)	0	0	0	0	0	0	0	0	0	0	0	0	0	1	0	0	0	0	0	0	0	0	0	
	⋮	⋮	⋮	⋮	⋮	⋮	⋮	⋮	⋮	⋮	⋮	⋮	⋮	⋮	⋮	⋮	⋮	⋮	⋮	⋮	⋮	⋮	⋮	⋮	
	⋮	⋮	⋮	⋮	⋮	⋮	⋮	⋮	⋮	⋮	⋮	⋮	⋮	⋮	⋮	⋮	⋮	⋮	⋮	⋮	⋮	⋮	⋮	⋮	
	Green(253)	0	0	0	0	0	0	0	0	1	1	1	1	1	1	0	1	0	0	0	0	0	0	0	
	Green(254)	0	0	0	0	0	0	0	0	1	1	1	1	1	1	1	0	0	0	0	0	0	0	0	
	Green(255)	0	0	0	0	0	0	0	0	1	1	1	1	1	1	1	1	0	0	0	0	0	0	0	
Gray Scale Of Blue	Blue(0) / Dark	0	0	0	0	0	0	0	0	0	0	0	0	0	0	0	0	0	0	0	0	0	0	0	
	Blue(1)	0	0	0	0	0	0	0	0	0	0	0	0	0	0	0	0	0	0	0	0	0	0	1	
	Blue(2)	0	0	0	0	0	0	0	0	0	0	0	0	0	0	0	0	0	0	0	0	0	1	0	
	⋮	⋮	⋮	⋮	⋮	⋮	⋮	⋮	⋮	⋮	⋮	⋮	⋮	⋮	⋮	⋮	⋮	⋮	⋮	⋮	⋮	⋮	⋮	⋮	
	⋮	⋮	⋮	⋮	⋮	⋮	⋮	⋮	⋮	⋮	⋮	⋮	⋮	⋮	⋮	⋮	⋮	⋮	⋮	⋮	⋮	⋮	⋮	⋮	
	Blue(253)	0	0	0	0	0	0	0	0	0	0	0	0	0	0	0	1	1	1	1	1	1	1	0	
	Blue(254)	0	0	0	0	0	0	0	0	0	0	0	0	0	0	0	1	1	1	1	1	1	1	0	
	Blue(255)	0	0	0	0	0	0	0	0	0	0	0	0	0	0	0	1	1	1	1	1	1	1	1	

Note (1) 0: Low Level Voltage, 1: High Level Voltage

4.5 DISPLAY TIMING SPECIFICATIONS

The input signal timing specifications are shown as the following table and timing diagram.

Signal	Item	Symbol	Min.	Typ.	Max.	Unit	Note
LVDS Clock	Frequency	Fc	54.54	74	98	MHz	-
	Period	Tc	-	13.5	-	ns	
	Input cycle to cycle jitter	T _{rcj}	-0.02*Tc	-	0.02*Tc	ns	(1)
	Input Clock to data skew	TLVCCS	-400	0	400	ps	(2)
	Spread spectrum modulation range	F _{ckin_mod}	0.97*Fc		1.03*Fc	MHz	(3)
	Spread spectrum modulation frequency	F _{SSM}			200	KHz	
Vertical Display Term	Frame Rate	Fr	47	60	75	Hz	Tv=Tvd+Tvb (4)
	Total	Tv	1105	1125	1250	Th	-
	Active Display	Tvd	1080	1080	1080	Th	-
	Blank	Tvb	25	45	170	Th	-
Horizontal Display Term	Total	Th	1050	1100	1150	Tc	Th=Thd+Thb
	Active Display	Thd	960	960	960	Tc	-
	Blank	Thb	90	140	190	Tc	-

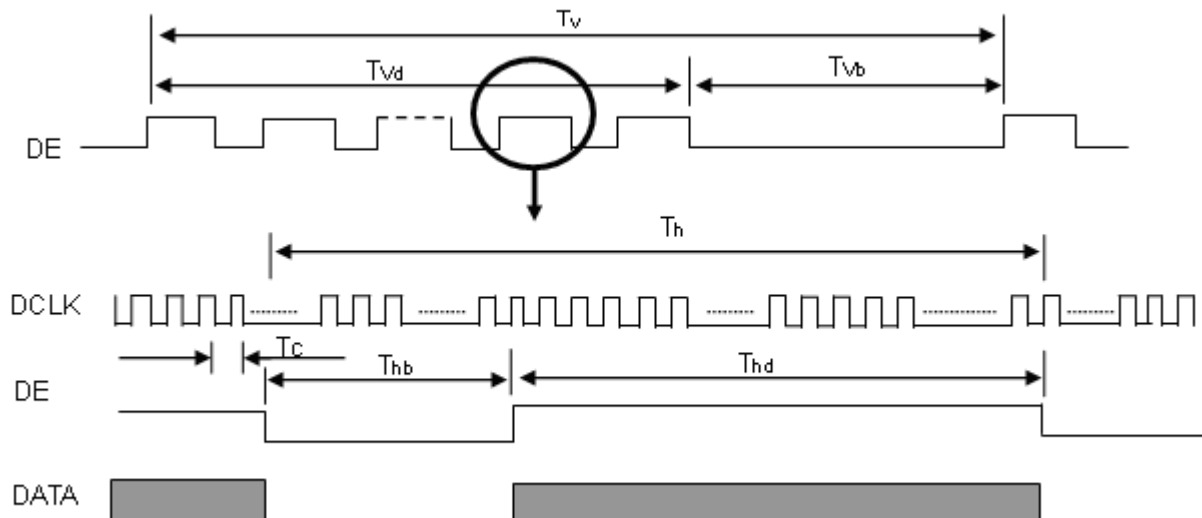
Note1: Because this module is operated by DE only mode, Hsync and Vsync input signals are ignored.

Note2: Please make sure the range of pixel clock has follow the below equation:

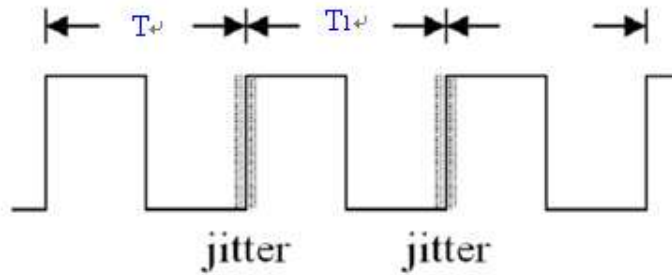
$$F_c(\max) \geq Fr \times Tv \times Th$$

$$Fr \times Tv \times Th \geq F_c(\min)$$

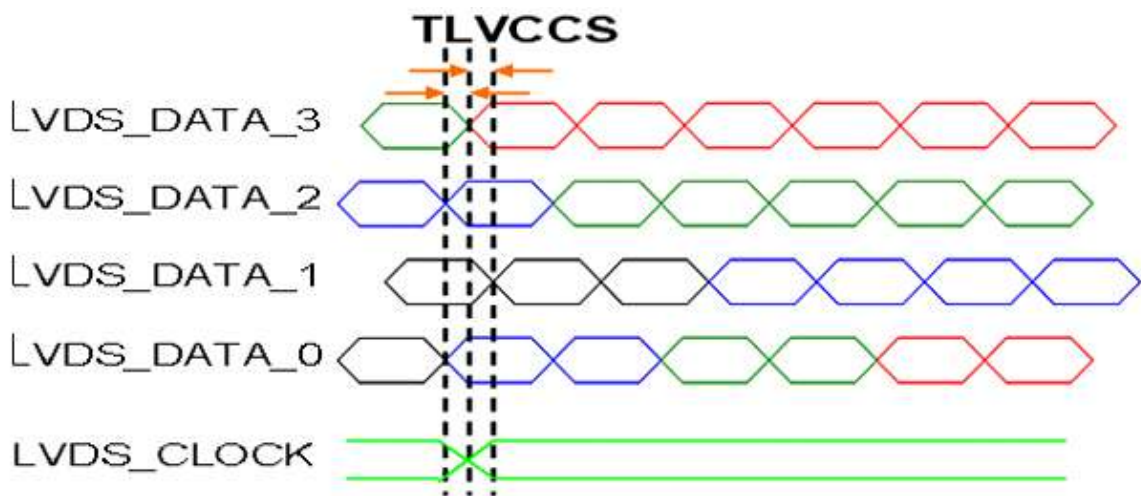
INPUT SIGNAL TIMING DIAGRAM



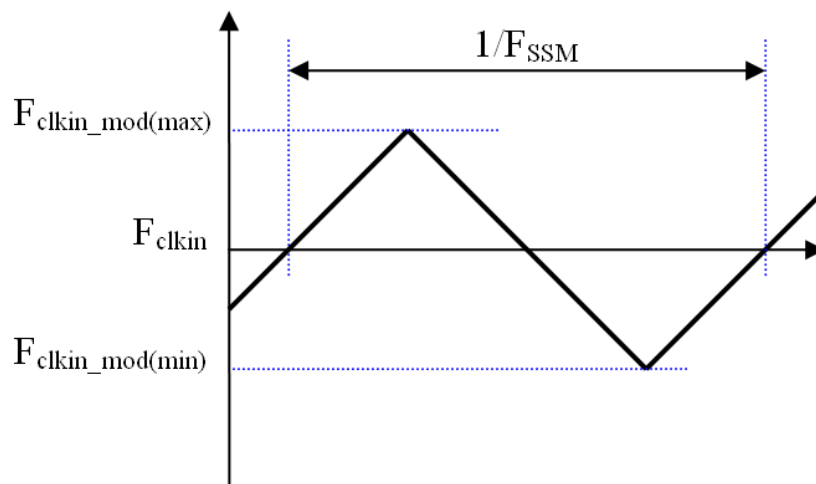
Note (1) The input clock cycle-to-cycle jitter is defined as below figures. $Trcl = |T1 - T1'|$



Note (2) Input Clock to data skew is defined as below figures.



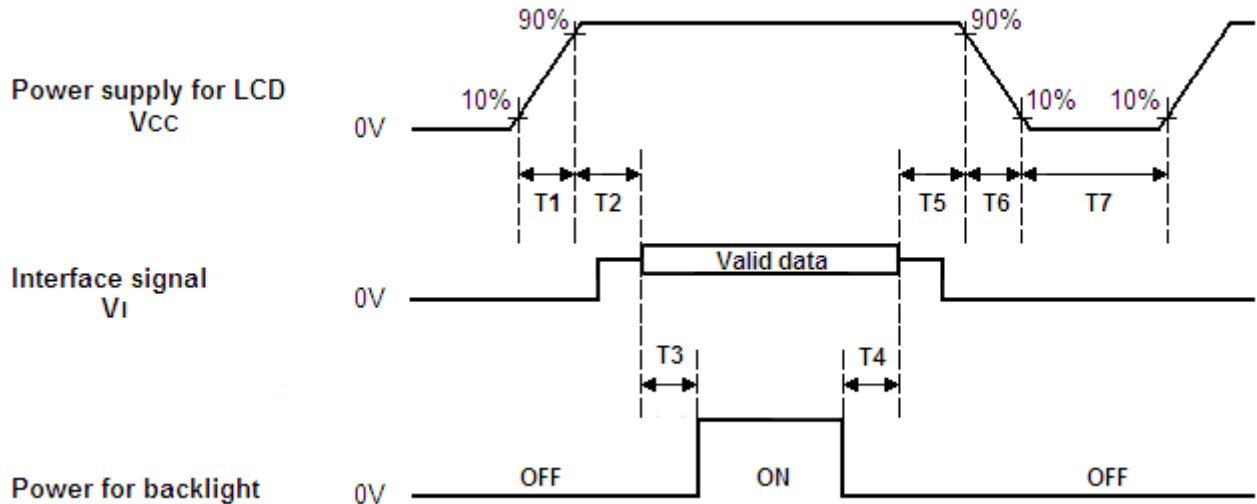
Note (3) The SSCG (Spread spectrum clock generator) is defined as below figures.



The DCLK range at last line of V-blank should be set in 0 to $H_{display}/2$

4.6 POWER ON/OFF SEQUENCE

The power sequence specifications are shown as the following table and diagram.



Timing Specifications:

Parameters	Values			Units
	Min	Typ.	Max	
T1	0.5	--	10	ms
T2	50	--	100	ms
T3	450	--	--	ms
T4	90	--	--	ms
T5	0	--	50	ms
T6	0.1	--	100	ms
T7	500	--	--	ms

Note (1) The supply voltage of the external system for the module input should be the same as the definition of Vcc.

Note (2) When the backlight turns on before the LCD operation of the LCD turns off, the display may momentarily become abnormal screen.

Note (3) In case of VCC = off level, please keep the level of input signals on the low or keep a high impedance.

Note (4) T4 should be measured after the module has been fully discharged between power off and on period.

Note (5) Interface signal shall not be kept at high impedance when the power is on.

Note (6) INX won't take any responsibility for the products which are damaged by the customers not following the Power Sequence.

Note (7) There might be slight electronic noise when LCD is turned off (even backlight unit is also off). To avoid this symptom, we suggest "Vcc falling timing" to follow "t6 spec".

5. OPTICAL CHARACTERISTICS

5.1 TEST CONDITIONS

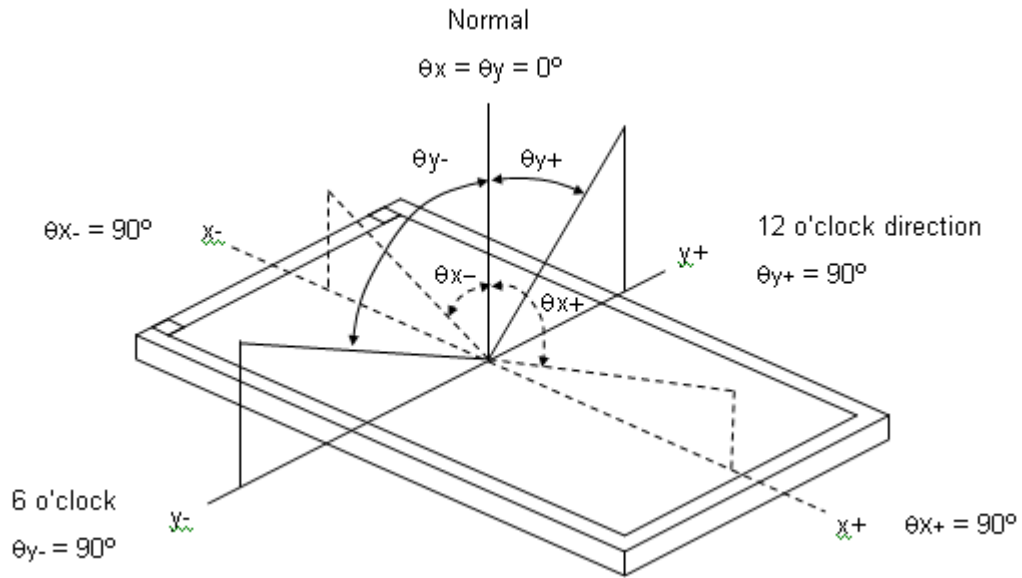
Item	Symbol	Value	Unit
Ambient Temperature	Ta	25±2	oC
Ambient Humidity	Ha	50±10	%RH
Supply Voltage	VCC	5	V
Input Signal	According to typical value in "3. ELECTRICAL CHARACTERISTICS"		
LED Light Bar Input Current Per Input Pin	IPIN	75± 2.55	mA
PWM Duty Ratio	D	100	%
LED Light Bar Test Converter	INX 35-D084290		

5.2 OPTICAL SPECIFICATIONS

The relative measurement methods of optical characteristics are shown in 5.2. The following items should be measured under the test conditions described in 5.1 and stable environment shown in Note (5).

Item	Symbol	Condition	Min.	Typ.	Max.	Unit	Note						
Color Chromaticity (CIE 1931)	Red	Rx	$\theta_x=0^\circ, \theta_y=0^\circ$ CS-2000 R=G=B=255 Gray scale	Typ - 0.03	0.639	Typ + 0.03	-	(1), (5)					
		Ry			0.339								
	Green	Gx			0.314								
		Gy			0.627								
	Blue	Bx			0.156								
		By			0.057								
	White	Wx			0.313								
		Wy			0.329								
	Center Luminance of White (Center of Screen)	Lc							250	300	-	cd/m ²	(4), (5)
	Contrast Ratio	CR							800	1200	-	-	(2), (5)
Response Time	T _R	$\theta_x=0^\circ, \theta_y=0^\circ$	-	1.5	2.5	ms	(3)						
	T _F		-	3.5	5.5								
White Variation	δW	$\theta_x=0^\circ, \theta_y=0^\circ$ USB2000		-	1.42	-	(5), (6)						
Viewing Angle	Horizontal	$\theta_{x-} + \theta_{x+}$	CR ≥ 10 USB2000	150	170	-	Deg.	(1), (5)					
	Vertical	$\theta_{y-} + \theta_{y+}$		140	160	-							
Viewing Angle	Horizontal	$\theta_{x-} + \theta_{x+}$	CR ≥ 5 USB2000	160	178	-	Deg.	(1), (5)					
	Vertical	$\theta_{y-} + \theta_{y+}$		150	170	-							

Note (1) Definition of Viewing Angle (θ_x, θ_y):



Note (2) Definition of Contrast Ratio (CR):

The contrast ratio can be calculated by the following expression.

$$\text{Contrast Ratio (CR)} = L_{255} / L_0$$

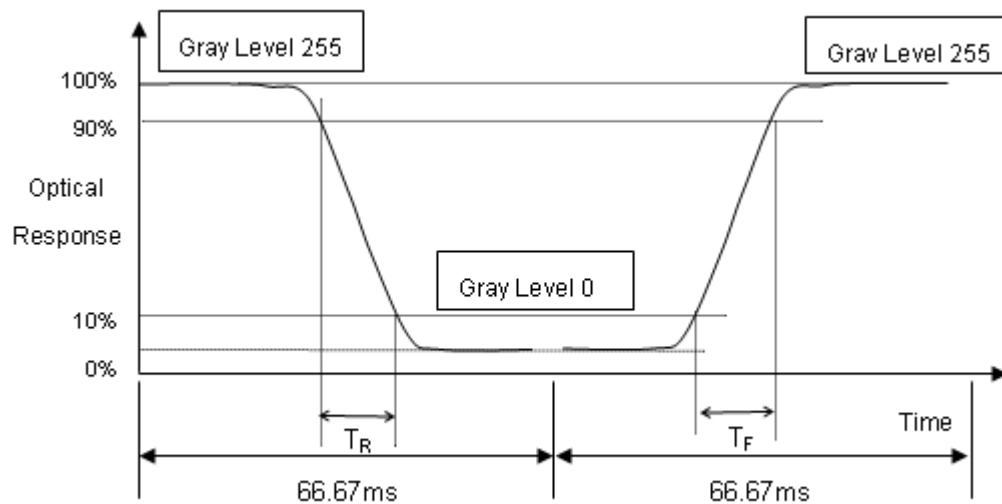
L255: Luminance of gray level 255

L 0: Luminance of gray level 0

$$CR = CR(5)$$

CR (X) is corresponding to the Contrast Ratio of the point X at Figure in Note (6).

Note (3) Definition of Response Time (T_R, T_F):



Note (4) Definition of Luminance of White (L_c):

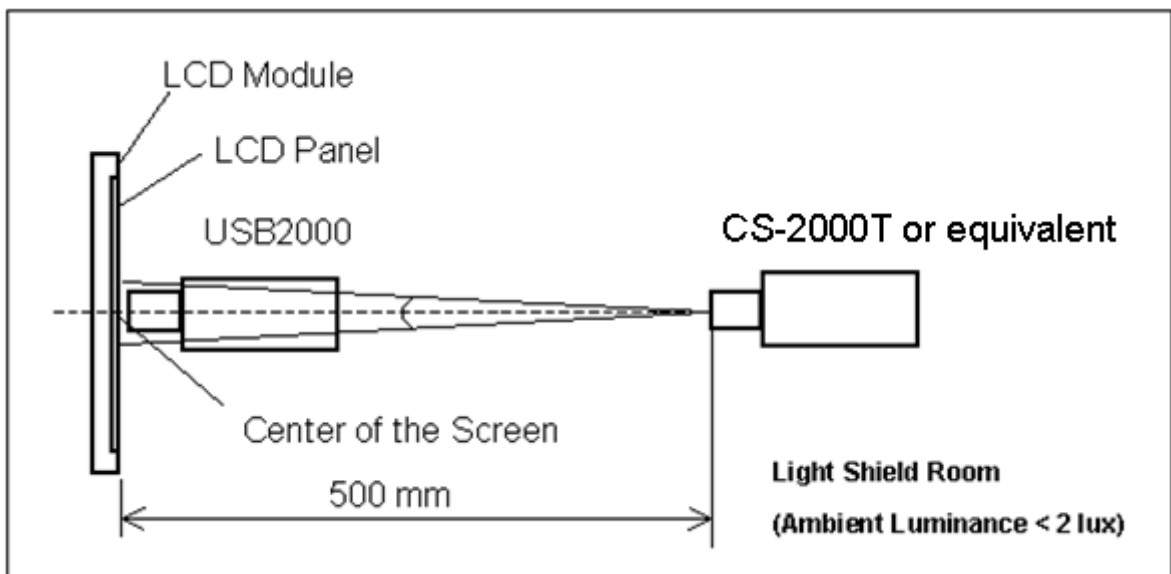
Measure the luminance of gray level 255 at center point

$$L_c = L(5)$$

$L(x)$ is corresponding to the luminance of the point X at Figure in Note (6).

Note (5) Measurement Setup:

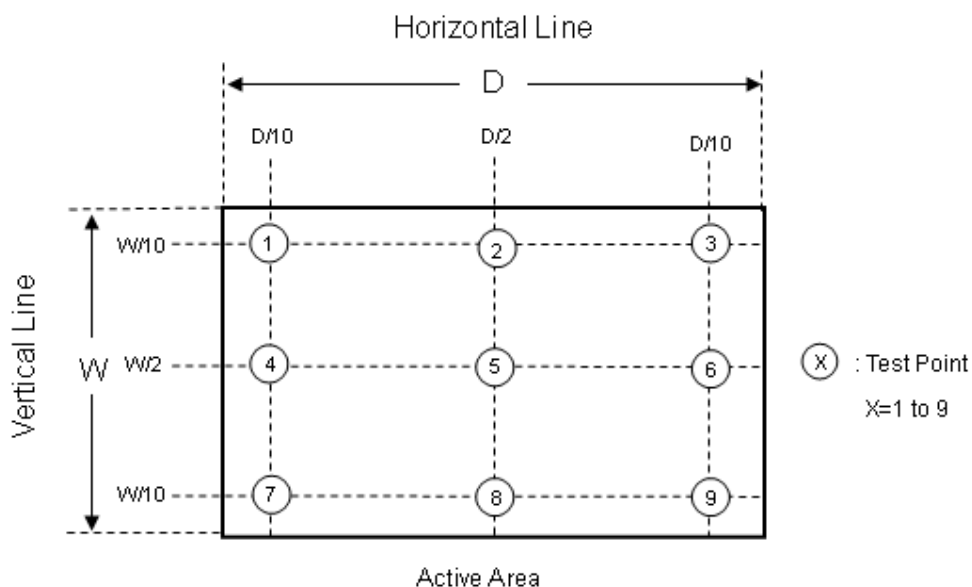
The LCD module should be stabilized at given temperature for 40 minutes to avoid abrupt temperature change during measuring. In order to stabilize the luminance, the measurement should be executed after lighting Backlight for 40 minutes in a windless room.



Note (6) Definition of White Variation (δW):

Measure the luminance of gray level 255 at 9 points

$$\delta W = (\text{Minimum} [L(1) \sim L(9)] / \text{Maximum} [L(1) \sim L(9)]) * 100\%$$



6. RELIABILITY TEST ITEM

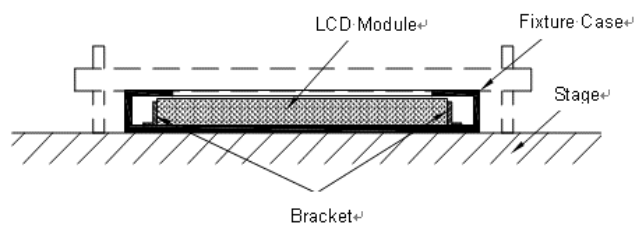
Items	Required Condition	Note
Temperature Humidity Bias (THB)	Ta= 50°C , 80%RH, 240hours	
High Temperature Operation (HTO)	Ta= 50°C , 240hours	
Low Temperature Operation (LTO)	Ta= 0°C , 240hours	
High Temperature Storage (HTS)	Ta= 60°C , 240hours	
Low Temperature Storage (LTS)	Ta= -20°C , 240hours	
Vibration Test (Non-operation)	Acceleration: 1.5 G Wave: sine Frequency: 10 - 300 Hz Sweep: 30 Minutes each Axis (X, Y, Z)	
Shock Test (Non-operation)	Acceleration: 50 G Wave: Half-sine Active Time: 11 ms Direction : ± X, ± Y, ± Z.(one time for each Axis)	
Thermal Shock Test (TST)	-20°C/30min , 60°C / 30min , 100 cycles	
On/Off Test	25°C , On/10sec , Off /10sec , 30,000 cycles	
ESD (Electro Static Discharge)	Contact Discharge: ± 8KV, 150pF(330Ω) Air Discharge: ± 15KV, 150pF(330Ω)	
Altitude Test	Operation:10,000 ft / 24hours Non-Operation:30,000 ft / 24hours	

Note (1) criteria : Normal display image with no obvious non-uniformity and no line defect.

Note (2) Evaluation should be tested after storage at room temperature for more than two hour

Note (3) At testing Vibration and Shock, the fixture in holding the module has to be hard and rigid enough so that the module would not be twisted or bent by the fixture.

The fixing condition is shown as below:



7. MECHANICAL STRENGTH CHARACTERISTICS

7.1 MECHANICAL STRENGTH SPECIFICATIONS

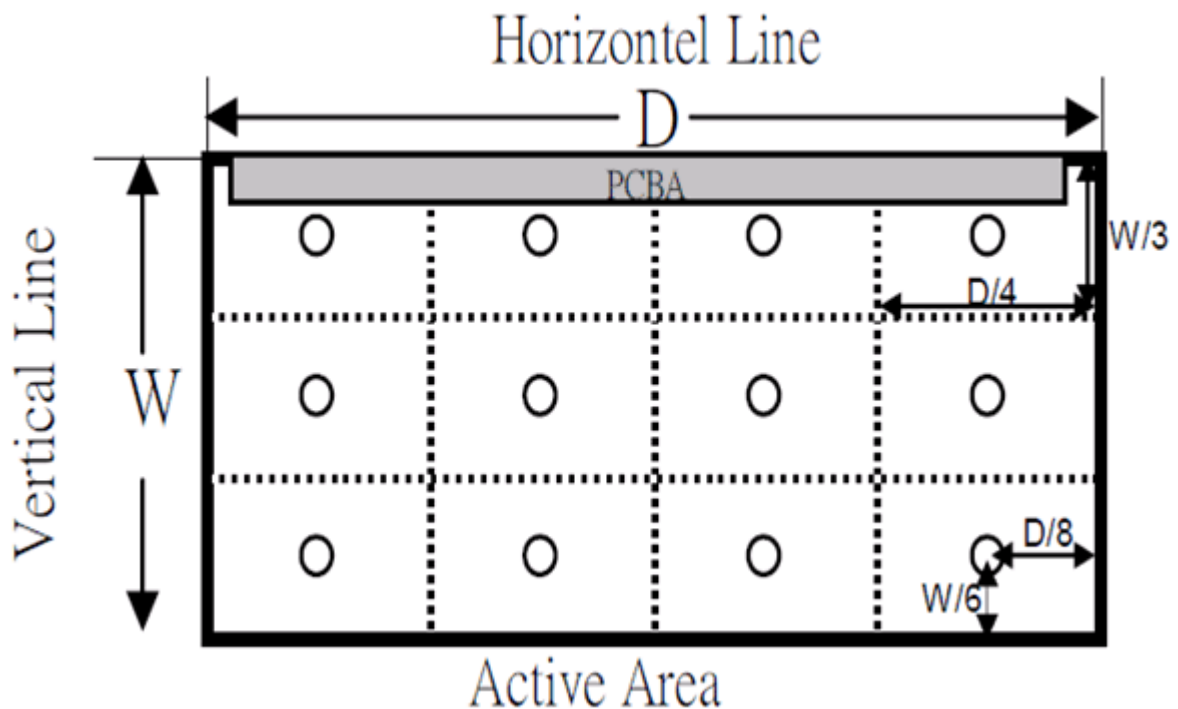
Item	Condition	Min	Unit	Note
Mechanical Strength	128 th Gray Pattern	0.6	Kgf	

7.2 TEST CONDITIONS

Items	Description
Test Condition	1. Ambient Illumination : 10~15 lux 2. Test Pattern : 128 Gray 3. Distance of the judgment : 30cm from the surface of module 4. Viewing angle of the judgment : Front
Gage Information	1. Push pull guage a. Model name : HF-50, maker : ALGOL b. Shape of gage tip - Diameter : 2mm - Thickness : 2mm
Definition of Minimum force	To measure minimum force when operator detects any white spot and light leakage that have occurred while operator presses on back side of module with push pull gage.

7.3 DEFINITION OF TEST POINTS

Measure the minimum force of test points at 128th Gray pattern. The test points at back side of module area is showing as below (If the test points on the PCBA, these points are not included) .

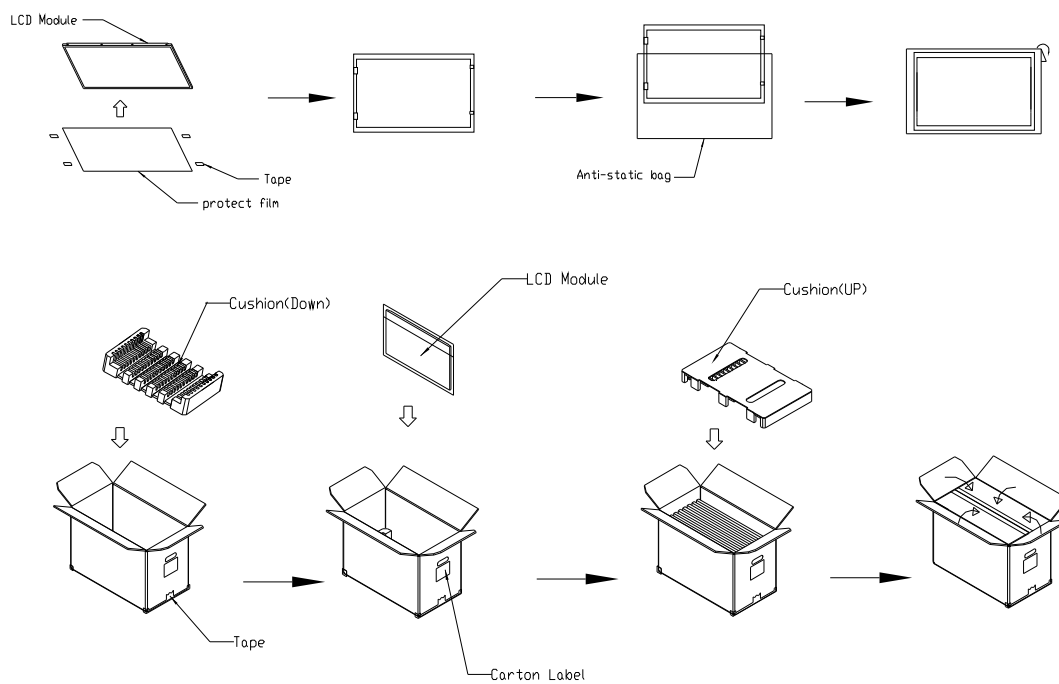


8. PACKING

8.1 PACKING SPECIFICATIONS

- (1) 10 LCD modules / 1 Box
- (2) Box dimensions: 713 (L) X 429 (W) X 453 (H) mm
- (3) Weight: approximately: 29.7Kg (10 modules per box)

8.2 PACKING METHOD



- 1. Carton dimensions: 713(L)x429(W)x453(H)mm
- 2. 10 modules / carton

Figure. 8-1 Packing method

8.3 PALLET

For ocean shipping

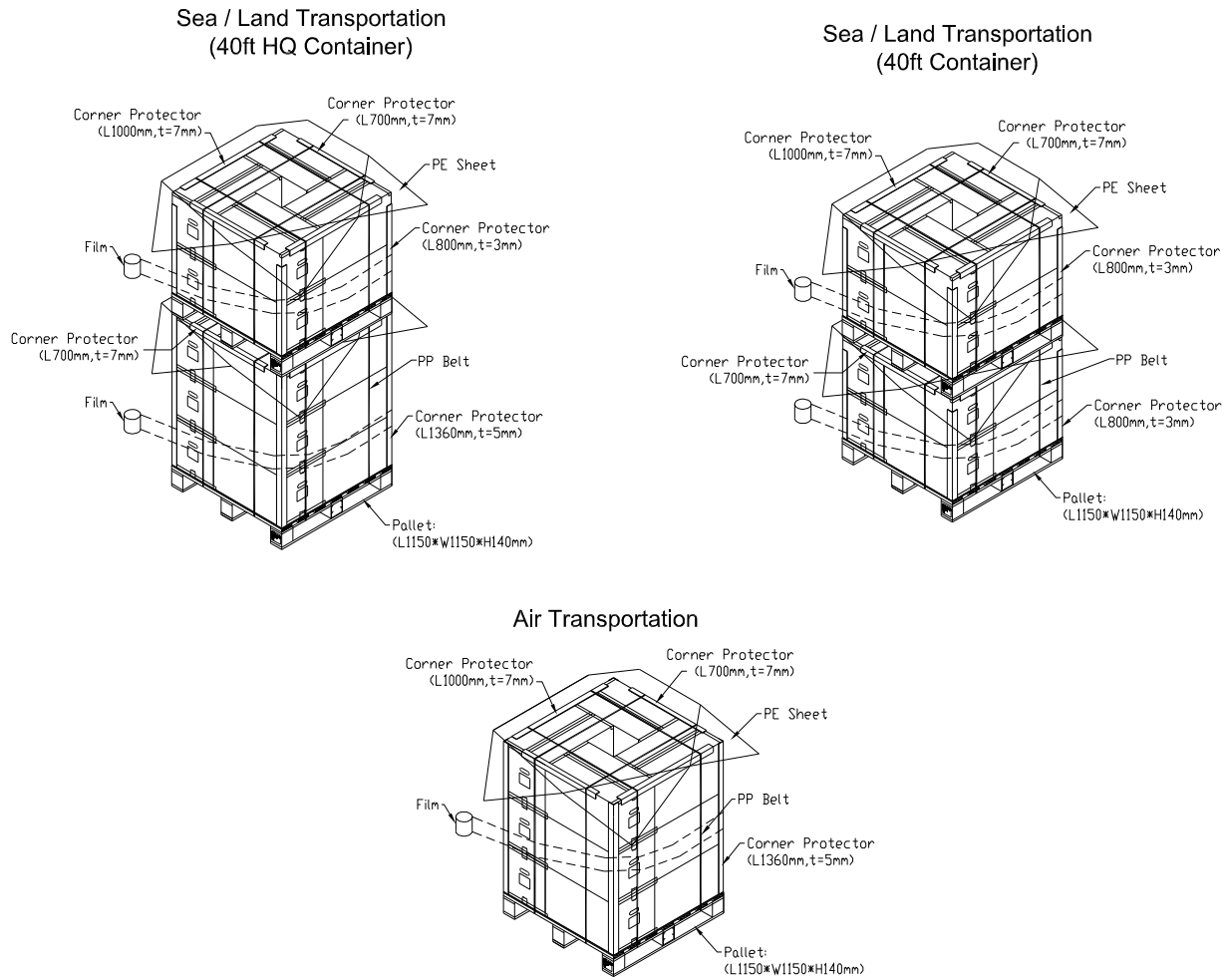


Figure. 8-2 Packing method

8.4 UN-PACKING METHOD

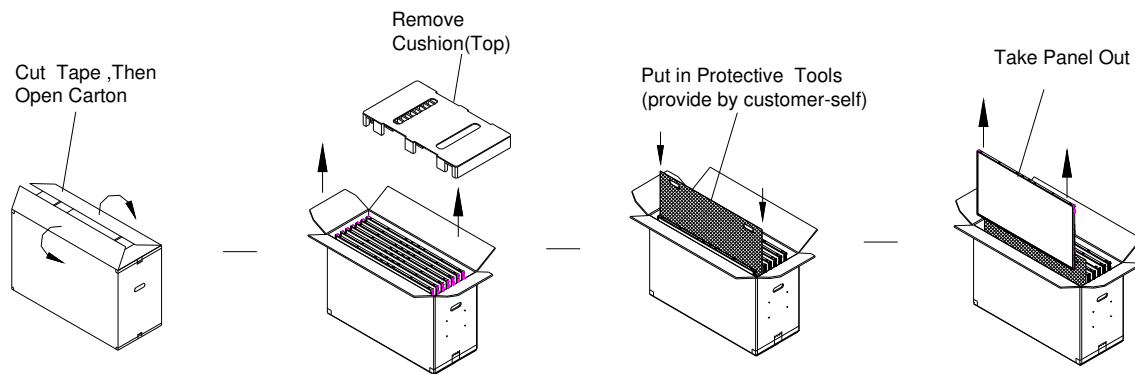


Figure. 8-3 UN-Packing method

9. INX MODULE LABEL

The barcode nameplate is pasted on each module as illustration, and its definitions are as following explanation.



(a) Model Name: M270HGE-L30

(b) Revision: Rev. XX, for example: A0, A1... B1, B2... or C1, C2...etc.

(c) INX barcode definition:

Serial ID: XX-XX-X-XX-YMD-L-NNNN

Code	Meaning	Description
XX	INX internal use	-
XX	Revision	Cover all the change
X	INX internal use	-
XX	INX internal use	-
YMD	Year, month, day	Year: 0~9, 2001=1, 2002=2, 2003=3...2010=0, 2011=1, 2012=2... Month: 1~12=1, 2, 3, ~, 9, A, B, C Day: 1~31=1, 2, 3, ~, 9, A, B, C, ~, W, X, Y, exclude I, O, and U.
L	Product line #	Line 1=1, Line 2=2, Line 3=3, ...
NNNN	Serial number	Manufacturing sequence of product

(d) Customer's barcode definition:

Serial ID: CM-R0E30-X-X-X-XX-L-XX-L-YMD-NNNN

Code	Meaning	Description
CM	Supplier code	INX=CM
R0E30	Model number	M270HGE-L30= R0E30
X	Revision code	Non ZBD: 1,2,~,8,9 / ZBD: A~Z
X	Source driver IC code	Century=1, CLL=2, Demos=3, Epson=4, Fujitsu=5, Himax=6, Hitachi=7, Hynix=8, LDI=9, Matsushita=A, NEC=B, Novatec=C, OKI=D, Philips=E, Renasas=F, Samsung=G, Sanyo=H, Sharp=I, TI=J, Topro=K, Toshiba=L, Windbond=M, ILITEK=Q, Fiti=Y, None IC =Z
X	Gate driver IC code	Century=1, CLL=2, Demos=3, Epson=4, Fujitsu=5, Himax=6, Hitachi=7, Hynix=8, LDI=9, Matsushita=A, NEC=B, Novatec=C, OKI=D, Philips=E, Renasas=F, Samsung=G, Sanyo=H, Sharp=I, TI=J, Topro=K, Toshiba=L, Windbond=M, ILITEK=Q, Fiti=Y, None IC =Z
XX	Cell location	Tainan Taiwan=TN, Ningbo China=CN, Hsinchu Taiwan=SC
L	Cell line #	1,2,~,9,A,B,~,Y,Z
XX	Module location	Tainan, Taiwan=TN ; Ningbo China=NP ; Shenzhen China=SH ; Nanhai China=NH
L	Module line #	1,2,~,9,A,B,~,Y,Z
YMD	Year, month, day	Year: 0~9, 2001=1, 2002=2, 2003=3...2010=0, 2011=1, 2012=2... Month: 1~12=1, 2, 3, ~, 9, A, B, C Day: 1~31=1, 2, 3, ~, 9, A, B, C, ~, T, U, V
NNNN	Serial number	By LCD supplier

(e) FAB ID(UL Factory ID):

Region	Factory ID
TWINX	GEMN
NBCMI	LEOO
NBCMI	VIRO
NBCME	CANO
NHCM1	CAPG

10. PRECAUTIONS

10.1 ASSEMBLY AND HANDLING PRECAUTIONS

- (1) Do not apply rough force such as bending or twisting to the module during assembly.
- (2) To assemble or install module into user's system can be only in clean working areas. The dust and oil may cause electrical short or worsen the polarizer.
- (3) It's not permitted to have pressure or impulse on the module because the LCD panel and Backlight will be damaged.
- (4) Always follow the correct power sequence when LCD module is connecting and operating. This can prevent damage to the CMOS LSI chips during latch-up.
- (5) Do not pull the I/F connector in or out while the module is operating.
- (6) Do not disassemble the module.
- (7) Use a soft dry cloth without chemicals for cleaning, because the surface of polarizer is very soft and easily scratched.
- (8) It is dangerous that moisture come into or contacted the LCD module, because moisture may damage LCD module when it is operating.
- (9) High temperature or humidity may reduce the performance of module. Please store LCD module within the specified storage conditions.
- (10) When ambient temperature is lower than 10°C may reduce the display quality. For example, the response time will become slowly.

10.2 STORAGE PRECAUTIONS

- (1) Do not leave the module in high temperature, and high humidity for a long time. It is highly recommended to store the module with temperature from 0°C to 35°C and relative humidity of less than 90%
- (2) Do not store the TFT – LCD module in direct sunlight
- (3) The module should be stored in dark place. It is prohibited to apply sunlight or fluorescent light in storing

10.3 OPERATION PRECAUTIONS

- (1) The LCD product should be operated under normal condition.
Normal condition is defined as below :
Temperature : 20±15°C
Humidity: 65±20%
Display pattern : continually changing pattern(Not stationary)

- (2) If the product will be used in extreme conditions such as high temperature, high humidity, high altitude, display pattern or operation time etc... It is strongly recommended to contact CMI for application engineering advice. Otherwise, its reliability and function may not be guaranteed.

10.4 SAFETY PRECAUTIONS

- (1) If the liquid crystal material leaks from the panel, it should be kept away from the eyes or mouth. In case of contact with hands, skin or clothes, it has to be washed away thoroughly with soap.
- (2) After the module's end of life, it is not harmful in case of normal operation and storage.

10.5 SAFETY STANDARDS


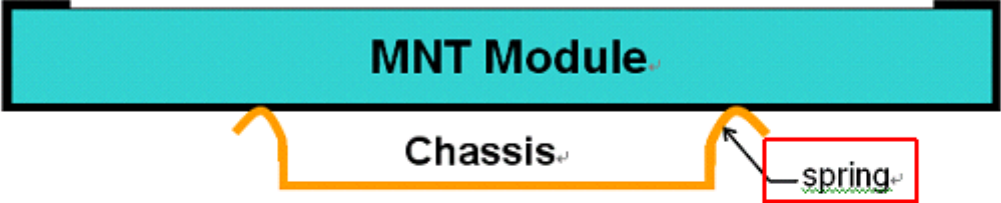

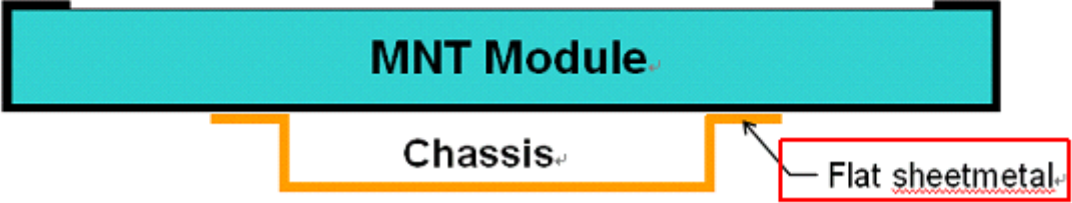

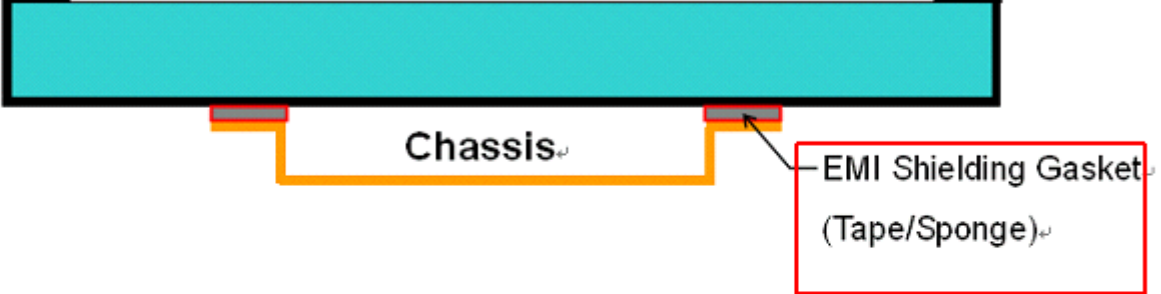
The LCD module should be certified with safety regulations as follows:

Requirement	Standard	remark
UL	UL60950-1:2006 or Ed.2:2007	
cUL/CSA	CAN/CSA C22.2 No.60950-1-03 or 60950-1-07	
CB	IEC60950-1:2005 / EN60950-1:2006+ A11:2009	

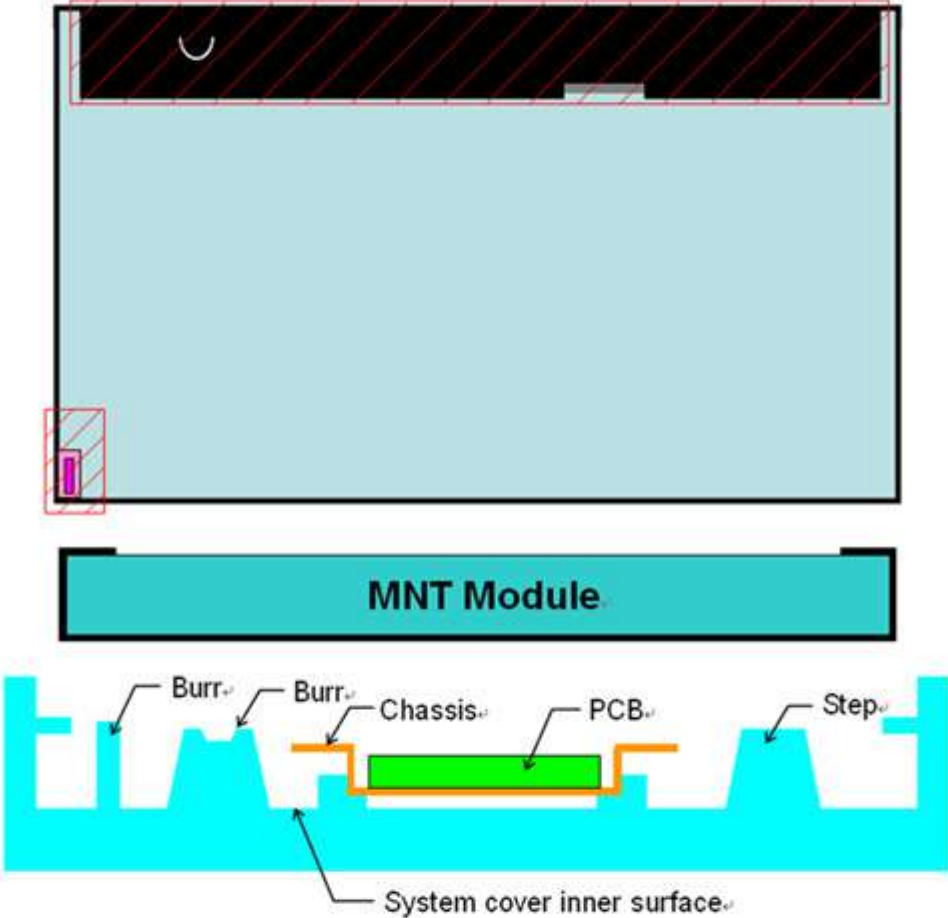

10.6 OTHER

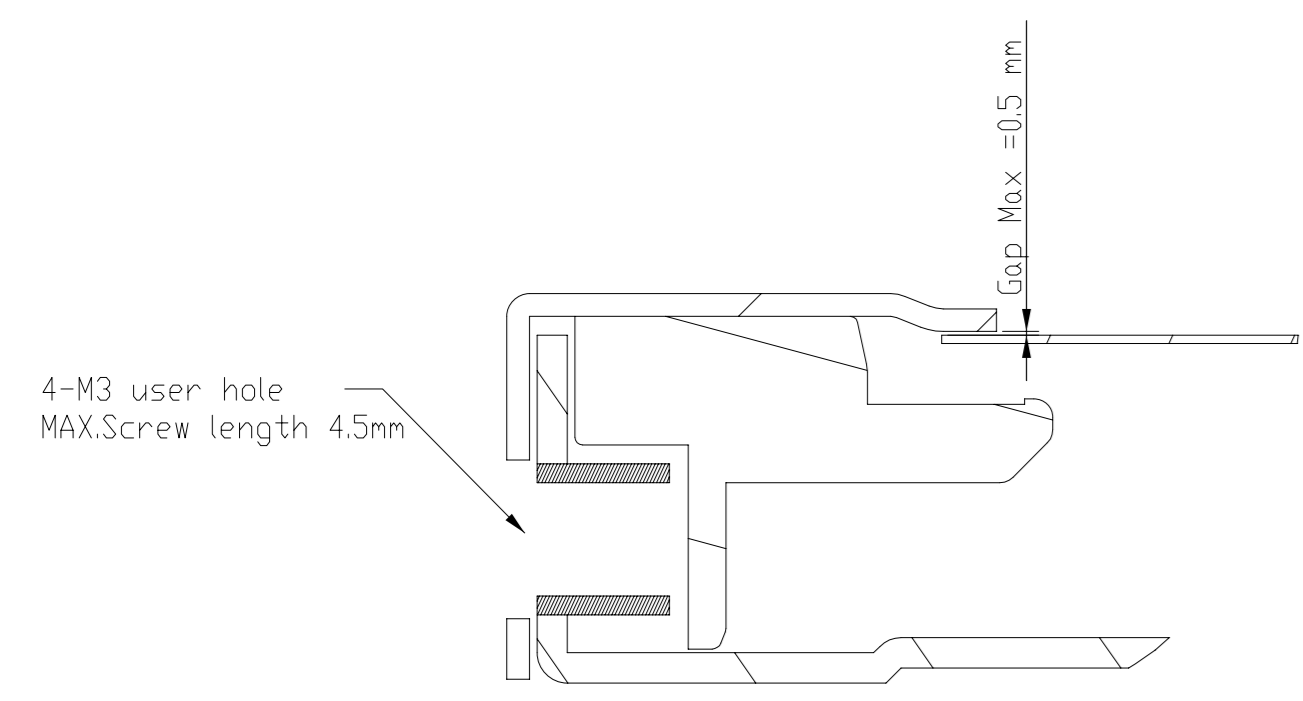
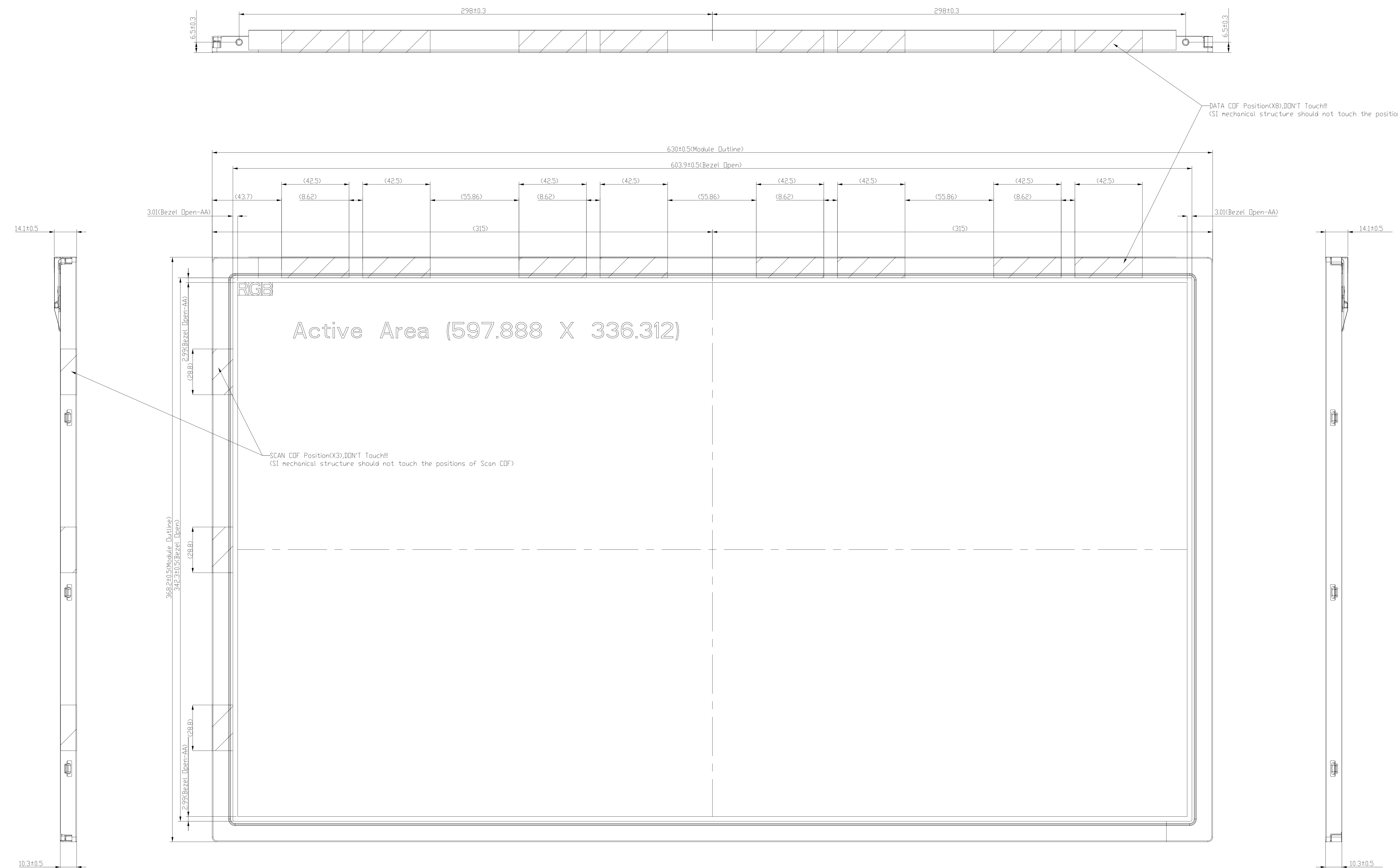
When fixed patterns are displayed for a long time, remnant image is likely to occur.

Appendix 1. SYSTEM COVER DESIGN NOTICE

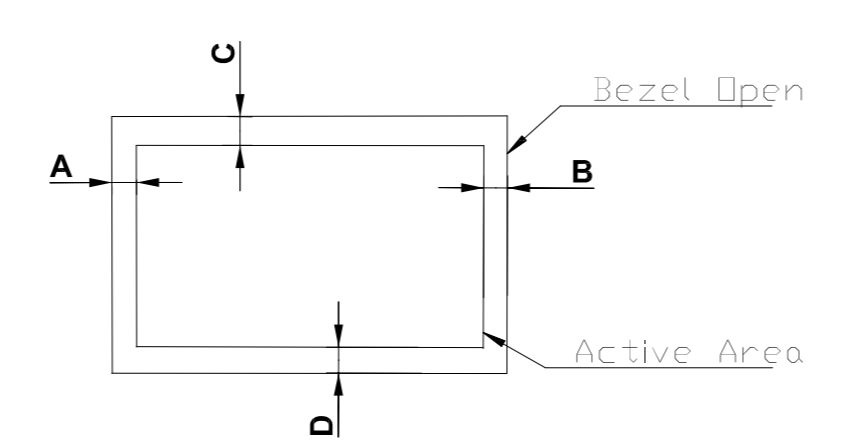
1.	Set Chassis and MNT Module touching Mode
	 <p>MNT Module</p> <p>Chassis</p> <p>spring</p>
	 <p>MNT Module</p> <p>Chassis</p> <p>Flat sheetmetal</p>
	 <p>MNT Module</p> <p>Chassis</p> <p>EMI Shielding Gasket (Tape/Sponge)</p>
<p>Definition</p>	<p>a) To prevent from abnormal display & white spot after Mechanical test, it is not recommended to used <u>spring</u> type chassis.</p> <p>b) We suggest the contact mode between Chassis and Module rear cover is Tape/Sponge, second is Flat <u>sheetmetal</u> type chassis (Don't interference from flat <u>sheetmetal</u> of chassis to rear cover of Module).</p>

2	Tape/sponge design on system inner surface
<p>The diagram illustrates the correct placement of Tape/Sponge between the MNT Module and the Chassis. The top part shows a cross-section of the system with labels: system front bezel, MNT Module, Chassis, System rear bezel, and Tape/Sponge. Below this, two inset diagrams illustrate placement options: one with a red 'X' showing four separate L-shaped pieces of Tape/Sponge, and one with a blue circle showing a single rectangular piece of Tape/Sponge.</p>	
Definition	<p>a) To prevent from abnormal display & white spot after Mechanical test, We suggest using Tape/Sponge as medium between chassis and Module rear cover could reduce the occurrence of white spot.</p> <p>b) When using the Tape/Sponge, suggest it be lay over between set chassis and module rear cover. it is not recommended to add tape/sponge in separate location. Since each tape/sponge may act as pressure concentration location.</p>

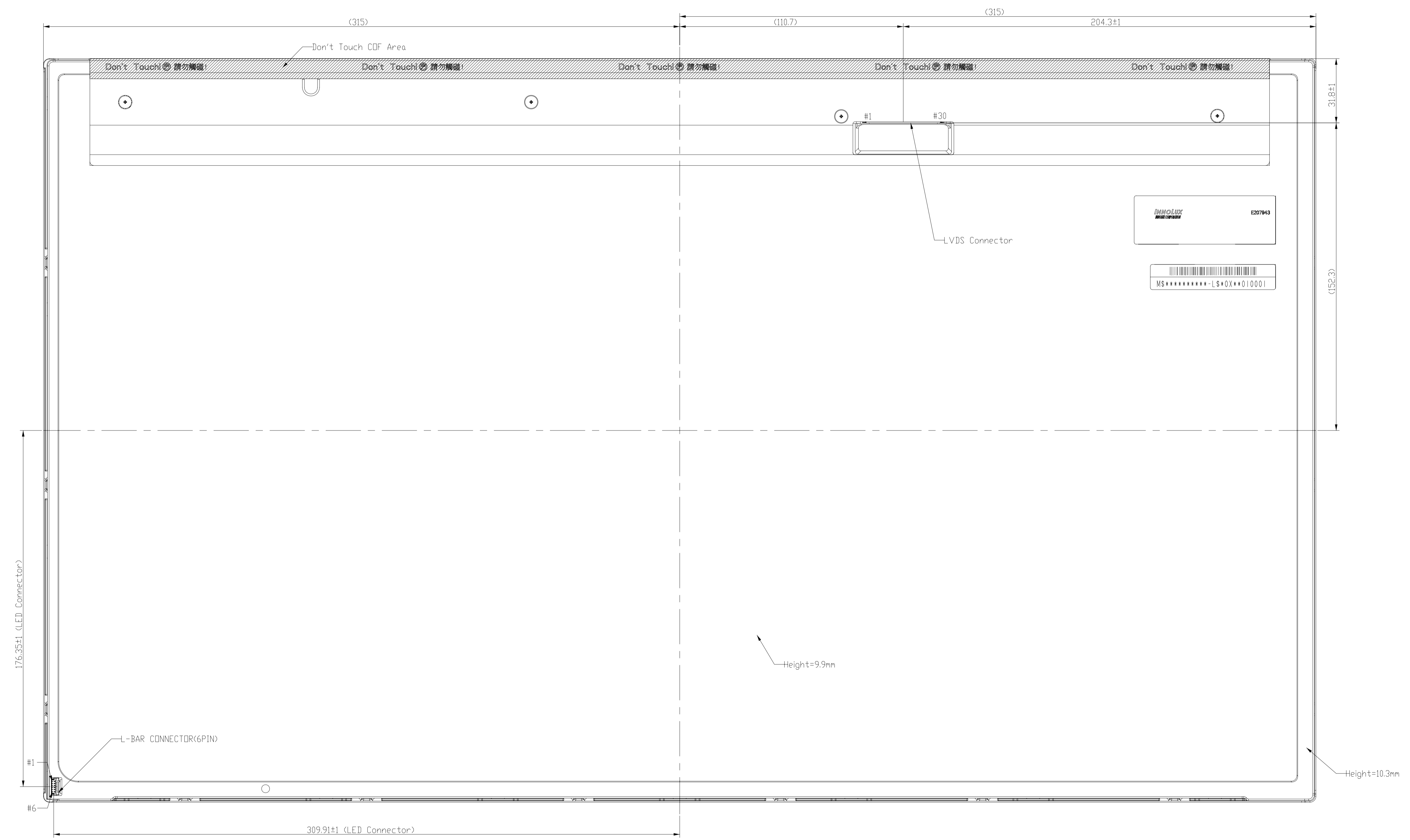
3	System inner surface examination
	
Definition	<p>a). Burr at logo edge, step, protrusion or PCB board will easily cause white spot.</p> <p>b). Keeping flat surface underneath module is recommended.</p> <p>c). The area () on Module PCBA and Light bar connector should keep at least 1mm gap to any structure with System cover inner surface.</p>



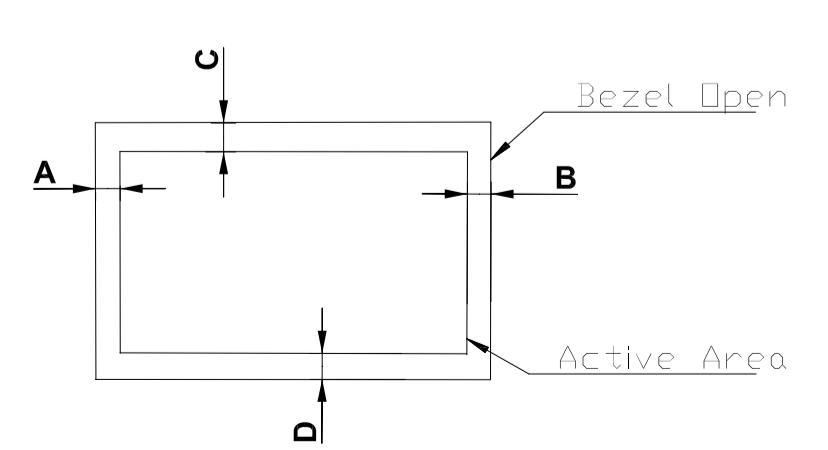
NOTE:
 1. THE DIMENSION EXCLUDES DEFORMATION.
 2. TOLERANCE WITHOUT NOTICED TO BE ±0.5mm.
 3. TORQUE OF M3 USER HOLE SHOULD BE WITHIN 5 kgf-cm AND JUST RESCREW 10 TIMES.
 4. DISPLAY AREA POSITION TOLERANCE ± 0.4-0.6±1
 5. THE CDF AREA IS WEAK, PLEASE DON'T PRESS THE CDF AREA.



REV	EC NUMBER	DESCRIPTION	DATE
1	XXXXXX	XXXXXXXX	XXXX/XX/XX



NOTE:
 1.LVDS INPUT CONNECTOR SPECIFICATION : P-TWO(187114-30091) or Foxconn (GS23301-1321S-7H)
 2.LED CONNECTOR SPECIFICATION : FCN(WM13-406-063N) or CVILUX(CI1406M1HRK-NH)
 3.THE DIMENSION EXCLUDES DEFORMATION.
 4.TOLERANCE WITHOUT NOTICED TO BE ±0.5mm.
 5.TORQUE OF M3 USER HOLE SHOULD BE WITHIN 5 kgf-cm AND JUST RESCREW 10 TIMES.
 6.DISPLAY AREA POSITION TOLERANCE : JA-BK=1
 7.THE CDF AREA IS WEAK. PLEASE DON'T PRESS THE CDF AREA.



SCALE 1

LEVEL	GENERAL LINEAR TOLERANCE	DATE	SCALE	UNIT	INNOVEX REV.
0.5 - 1.5	±0.1	DATE	1:1	mm	C
1.5 - 3	±0.2	APPROVED			Jason Cheng
3 - 6	±0.3	CHECKED			Tiffany Chen
6 - 10	±0.4	DESIGNED			TingTing Wu
10 - 15	±0.5				
15 - 20	±0.6				
20 - 30	±0.8				
30 - 50	±1.0				
50 - 100	±1.5				
100 - 200	±2.0				
200 - 500	±3.0				
500 - 1000	±4.0				
1000 - 2000	±5.0				
2000 - 5000	±6.0				
5000 - 10000	±8.0				
10000 - 20000	±10.0				
20000 - 50000	±12.0				
50000 - 100000	±15.0				
100000 - 200000	±20.0				
200000 - 500000	±25.0				
500000 - 1000000	±30.0				
1000000 - 2000000	±40.0				
2000000 - 5000000	±50.0				
5000000 - 10000000	±60.0				
10000000 - 20000000	±80.0				
20000000 - 50000000	±100.0				
50000000 - 100000000	±120.0				
100000000 - 200000000	±150.0				
200000000 - 500000000	±200.0				
500000000 - 1000000000	±250.0				
1000000000 - 2000000000	±300.0				
2000000000 - 5000000000	±400.0				
5000000000 - 10000000000	±500.0				
10000000000 - 20000000000	±600.0				
20000000000 - 50000000000	±800.0				
50000000000 - 100000000000	±1000.0				
100000000000 - 200000000000	±1200.0				
200000000000 - 500000000000	±1500.0				
500000000000 - 1000000000000	±2000.0				
1000000000000 - 2000000000000	±2500.0				
2000000000000 - 5000000000000	±3000.0				
5000000000000 - 10000000000000	±4000.0				
10000000000000 - 20000000000000	±5000.0				
20000000000000 - 50000000000000	±6000.0				
50000000000000 - 100000000000000	±8000.0				
100000000000000 - 200000000000000	±10000.0				
200000000000000 - 500000000000000	±12000.0				
500000000000000 - 1000000000000000	±15000.0				
1000000000000000 - 2000000000000000	±20000.0				
2000000000000000 - 5000000000000000	±25000.0				
5000000000000000 - 10000000000000000	±30000.0				
10000000000000000 - 20000000000000000	±40000.0				
20000000000000000 - 50000000000000000	±50000.0				
50000000000000000 - 100000000000000000	±60000.0				
100000000000000000 - 200000000000000000	±80000.0				
200000000000000000 - 500000000000000000	±100000.0				
500000000000000000 - 1000000000000000000	±120000.0				
1000000000000000000 - 2000000000000000000	±150000.0				
2000000000000000000 - 5000000000000000000	±200000.0				
5000000000000000000 - 10000000000000000000	±250000.0				
10000000000000000000 - 20000000000000000000	±300000.0				
20000000000000000000 - 50000000000000000000	±400000.0				
50000000000000000000 - 100000000000000000000	±500000.0				
100000000000000000000 - 200000000000000000000	±600000.0				
200000000000000000000 - 500000000000000000000	±800000.0				
500000000000000000000 - 1000000000000000000000	±1000000.0				
1000000000000000000000 - 2000000000000000000000	±1200000.0				
2000000000000000000000 - 5000000000000000000000	±1500000.0				
5000000000000000000000 - 10000000000000000000000	±2000000.0				
10000000000000000000000 - 20000000000000000000000	±2500000.0				
20000000000000000000000 - 50000000000000000000000	±3000000.0				
50000000000000000000000 - 100000000000000000000000	±4000000.0				
100000000000000000000000 - 200000000000000000000000	±5000000.0				
200000000000000000000000 - 500000000000000000000000	±6000000.0				
500000000000000000000000 - 1000000000000000000000000	±8000000.0				
1000000000000000000000000 - 2000000000000000000000000	±10000000.0				
2000000000000000000000000 - 5000000000000000000000000	±12000000.0				
5000000000000000000000000 - 10000000000000000000000000	±15000000.0				
10000000000000000000000000 - 20000000000000000000000000	±20000000.0				
20000000000000000000000000 - 50000000000000000000000000	±25000000.0				
50000000000000000000000000 - 100000000000000000000000000	±30000000.0				
100000000000000000000000000 - 200000000000000000000000000	±40000000.0				
200000000000000000000000000 - 500000000000000000000000000	±50000000.0				
500000000000000000000000000 - 1000000000000000000000000000	±60000000.0				
1000000000000000000000000000 - 2000000000000000000000000000	±80000000.0				
2000000000000000000000000000 - 5000000000000000000000000000	±100000000.0				
5000000000000000000000000000 - 10000000000000000000000000000	±120000000.0				
10000000000000000000000000000 - 20000000000000000000000000000	±150000000.0				
20000000000000000000000000000 - 50000000000000000000000000000	±200000000.0				
50000000000000000000000000000 - 100000000000000000000000000000	±250000000.0				
100000000000000000000000000000 - 200000000000000000000000000000	±300000000.0				
200000000000000000000000000000 - 500000000000000000000000000000	±400000000.0				
500000000000000000000000000000 - 1000000000000000000000000000000	±500000000.0				
1000000000000000000000000000000 - 2000000000000000000000000000000	±600000000.0				
2000000000000000000000000000000 - 5000000000000000000000000000000	±800000000.0				
5000000000000000000000000000000 - 10000000000000000000000000000000	±1000000000.0				
10000000000000000000000000000000 - 20000000000000000000000000000000	±1200000000.0				
20000000000000000000000000000000 - 50000000000000000000000000000000	±1500000000.0				
50000000000000000000000000000000 - 100000000000000000000000000000000	±2000000000.0				
100000000000000000000000000000000 - 200000000000000000000000000000000	±2500000000.0				
200000000000000000000000000000000 - 500000000000000000000000000000000	±3000000000.0				
500000000000000000000000000000000 - 1000000000000000000000000000000000	±4000000000.0				
1000000000000000000000000000000000 - 2000000000000000000000000000000000	±5000000000.0				
2000000000000000000000000000000000 - 5000000000000000000000000000000000	±6000000000.0				
5000000000000000000000000000000000 - 10000000000000000000000000000000000	±8000000000.0				
10000000000000000000000000000000000 - 20000000000000000000000000000000000	±10000000000.0				
20000000000000000000000000000000000 - 50000000000000000000000000000000000	±12000000000.0				
50000000000000000000000000000000000 - 100000000000000000000000000000000000	±15000000000.0				
100000000000000000000000000000000000 - 200000000000000000000000000000000000	±20000000000.0				
200000000000000000000000000000000000 - 500000000000000000000000000000000000	±25000000000.0				
500000000000000000000000000000000000 - 1000000000000000000000000000000000000	±30000000000.0				
1000000000000000000000000000000000000 - 2000000000000000000000000000000000000	±40000000000.0				
2000000000000000000000000000000000000 - 5000000000000000000000000000000000000	±50000000000.0				
5000000000000000000000000000000000000 - 10000000000000000000000000000000000000	±60000000000.0				
10000000000000000000000000000000000000 - 20000000000000000000000000000000000000	±80000000000.0				
20000000000000000000000000000000000000 - 50000000000000000000000000000000000000	±100000000000.0				
50000000000000000000000000000000000000 - 100000000000000000000000000000000000000	±120000000000.0				
100000000000000000000000000000000000000 - 200000000000000000000000000000000000000	±150000000000.0				
200000000000000000000000000000000000000 - 500000000000000000000000000000000000000	±200000000000.0				
500000000000000000000000000000000000000 - 1000000000000000000000000000000000000000	±250000000000.0				
1000000000000000000000000000000000000000 - 2000000000000000000000000000000000000000	±300000000000.0				
2000000000000000000000000000000000000000 - 5000000000000000000000000000000000000000	±400000000000.0				
5000000000000000000000000000000000000000 - 100	±500000000000.0				
100 - 200	±600000000000.0				
200 - 500	±800000000000.0				
500 - 1000	±1000000000000.0				
10000					