

SPECIFICATION FOR APPROVAL

() Preliminary Specification
(●) Final Specification

Title	23.8" Full HD TFT LCD
-------	-----------------------

BUYER	
MODEL	

SUPPLIER	LG Display Co., Ltd.
*MODEL	LM238WF8
SUFFIX	SSC1

*When you obtain standard approval,
please use the above model name without suffix

SIGNATURE	DATE
/	
/	
/	

Please return 1 copy for your confirmation
With your signature and comments.

APPROVED BY	SIGNATURE DATE
SangHoon Lee / G.Manager	<u>Signed, 5/15</u>
REVIEWED BY	
YongSung Kim / Manager [C]	<u>Signed, 5/15</u>
YunHo Hwang / Manager [M]	<u>Signed, 5/15</u>
GyuSam Kim / Manager [O]	<u>Signed, 5/15</u>
Jin Heo / Manager [P]	<u>Signed, 5/15</u>
PREPARED BY	
TaeIl Oh / Engineer	<u>Signed, 5/15</u>

Product engineering dept.
LG Display Co., Ltd

Product Specification

Contents

No.	Item	Page
	Cover	1
	Contents	2
	Record of Revisions	3
1	General Description	4
2	Absolute Maximum Ratings	5
3	Electrical Specifications	6
3-1	Electrical Characteristics	6
3-2	Interface Connections	9
3-3	Signal Timing Specifications	14
3-4	Signal Timing Waveforms	15
3-5	Color Data Reference	16
3-6	Power Sequence	17
3-7	Power Dip Condition	18
4	Optical Specifications	19
5	Mechanical Characteristics	23
6	Reliability	26
7	International Standards	27
7-1	Safety	27
7-2	Environment	27
8	Packing	28
8-1	Designation of Lot Mark	28
8-2	Packing Form	29
9	Precautions	30
9-1	Mounting Precautions	30
9-2	Operating Precautions	30
9-3	Electrostatic Discharge Control	31
9-4	Precautions For Strong Light Exposure	31
9-5	Storage	31
9-6	Handling Precautions For Protection Film	31

Product Specification

Record of Revisions

Revision No	Revision Date	Page	Before	After	Application Date																																																																												
0.0	May. 25 2023	-	First Draft(Preliminary)																																																																														
0.1	Jul.14 2023	8	<div>Table 3-2. LED Bar Electrical Characteristics</div> <table><thead><tr><th rowspan="2">Parameter</th><th rowspan="2">Symbol</th><th colspan="3">Values</th><th rowspan="2">Unit</th><th rowspan="2">Notes</th></tr><tr><th>Min</th><th>Typ</th><th>Max</th></tr></thead><tbody><tr><td>LED String Current</td><td>Is</td><td>-</td><td>TBD</td><td>TBD</td><td>mA</td><td>1,2</td></tr><tr><td>LED String Voltage</td><td>Vs</td><td>TBD</td><td>TBD</td><td>TBD</td><td>V</td><td>1,3</td></tr><tr><td>Power Consumption</td><td>P_{bar}</td><td>-</td><td>TBD</td><td>TBD</td><td>Watt</td><td>2,5</td></tr><tr><td>LED Life Time</td><td>LED_LT</td><td>30,000</td><td>-</td><td>-</td><td>Hrs</td><td>4</td></tr></tbody></table>	Parameter	Symbol	Values			Unit	Notes	Min	Typ	Max	LED String Current	Is	-	TBD	TBD	mA	1,2	LED String Voltage	Vs	TBD	TBD	TBD	V	1,3	Power Consumption	P _{bar}	-	TBD	TBD	Watt	2,5	LED Life Time	LED_LT	30,000	-	-	Hrs	4	<div>Table 3-2. LED Bar Electrical Characteristics</div> <table><thead><tr><th rowspan="2">Parameter</th><th rowspan="2">Symbol</th><th colspan="3">Values</th><th rowspan="2">Unit</th><th rowspan="2">Notes</th></tr><tr><th>Min</th><th>Typ</th><th>Max</th></tr></thead><tbody><tr><td>LED String Current</td><td>Is</td><td>-</td><td>(71)</td><td>(76)</td><td>mA</td><td>1,2</td></tr><tr><td>LED String Voltage</td><td>Vs</td><td>(39.6)</td><td>(42.6)</td><td>(45.6)</td><td>V</td><td>1,3</td></tr><tr><td>Power Consumption</td><td>P_{bar}</td><td>-</td><td>(12.1)</td><td>(13.0)</td><td>Watt</td><td>2,5</td></tr><tr><td>LED Life Time</td><td>LED_LT</td><td>30,000</td><td>-</td><td>-</td><td>Hrs</td><td>4</td></tr></tbody></table>	Parameter	Symbol	Values			Unit	Notes	Min	Typ	Max	LED String Current	Is	-	(71)	(76)	mA	1,2	LED String Voltage	Vs	(39.6)	(42.6)	(45.6)	V	1,3	Power Consumption	P _{bar}	-	(12.1)	(13.0)	Watt	2,5	LED Life Time	LED_LT	30,000	-	-	Hrs	4	
		Parameter	Symbol			Values					Unit	Notes																																																																					
	Min			Typ	Max																																																																												
	LED String Current	Is	-	TBD	TBD	mA	1,2																																																																										
LED String Voltage	Vs	TBD	TBD	TBD	V	1,3																																																																											
Power Consumption	P _{bar}	-	TBD	TBD	Watt	2,5																																																																											
LED Life Time	LED_LT	30,000	-	-	Hrs	4																																																																											
Parameter	Symbol	Values			Unit	Notes																																																																											
		Min	Typ	Max																																																																													
LED String Current	Is	-	(71)	(76)	mA	1,2																																																																											
LED String Voltage	Vs	(39.6)	(42.6)	(45.6)	V	1,3																																																																											
Power Consumption	P _{bar}	-	(12.1)	(13.0)	Watt	2,5																																																																											
LED Life Time	LED_LT	30,000	-	-	Hrs	4																																																																											
		24																																																																															
		25																																																																															
0.2	Aug.22 2023	24																																																																															
		25																																																																															

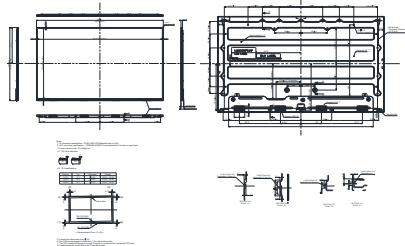
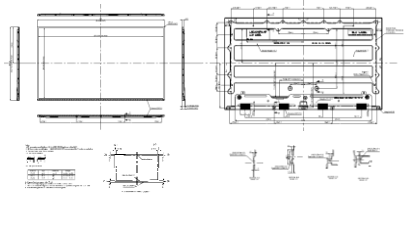
Product Specification

Record of Revisions

Revision No	Revision Date	Page	Before	After	Application Date																																																																												
0.2	Aug.22 2023	9	<div>Table 3-2. LED Bar Electrical Characteristics</div> <table><thead><tr><th rowspan="2">Parameter</th><th rowspan="2">Symbol</th><th colspan="3">Values</th><th rowspan="2">Unit</th><th rowspan="2">Notes</th></tr><tr><th>Min</th><th>Typ</th><th>Max</th></tr></thead><tbody><tr><td>LED String Current</td><td>I_s</td><td>-</td><td>(71)</td><td>(76)</td><td>mA</td><td>1,2</td></tr><tr><td>LED String Voltage</td><td>V_s</td><td>(39.6)</td><td>(42.6)</td><td>(45.6)</td><td>V</td><td>1,3</td></tr><tr><td>Power Consumption</td><td>P_{ave}</td><td>-</td><td>(12.1)</td><td>(13.0)</td><td>Watt</td><td>2,5</td></tr><tr><td>LED Life Time</td><td>LED_LT</td><td>30,000</td><td>-</td><td>-</td><td>Hrs</td><td>4</td></tr></tbody></table>	Parameter	Symbol	Values			Unit	Notes	Min	Typ	Max	LED String Current	I_s	-	(71)	(76)	mA	1,2	LED String Voltage	V_s	(39.6)	(42.6)	(45.6)	V	1,3	Power Consumption	P_{ave}	-	(12.1)	(13.0)	Watt	2,5	LED Life Time	LED_LT	30,000	-	-	Hrs	4	<div>Table 3-2. LED Bar Electrical Characteristics</div> <table><thead><tr><th rowspan="2">Parameter</th><th rowspan="2">Symbol</th><th colspan="3">Values</th><th rowspan="2">Unit</th><th rowspan="2">Notes</th></tr><tr><th>Min</th><th>Typ</th><th>Max</th></tr></thead><tbody><tr><td>LED String Current</td><td>I_s</td><td>-</td><td>(62)</td><td>(67)</td><td>mA</td><td>1,2</td></tr><tr><td>LED String Voltage</td><td>V_s</td><td>(39.2)</td><td>(42.2)</td><td>(45.2)</td><td>V</td><td>1,3</td></tr><tr><td>Power Consumption</td><td>P_{ave}</td><td>-</td><td>(10.5)</td><td>(11.2)</td><td>Watt</td><td>2,5</td></tr><tr><td>LED Life Time</td><td>LED_LT</td><td>30,000</td><td>-</td><td>-</td><td>Hrs</td><td>4</td></tr></tbody></table>	Parameter	Symbol	Values			Unit	Notes	Min	Typ	Max	LED String Current	I_s	-	(62)	(67)	mA	1,2	LED String Voltage	V_s	(39.2)	(42.2)	(45.2)	V	1,3	Power Consumption	P_{ave}	-	(10.5)	(11.2)	Watt	2,5	LED Life Time	LED_LT	30,000	-	-	Hrs	4	
		Parameter	Symbol			Values					Unit	Notes																																																																					
Min	Typ			Max																																																																													
LED String Current	I_s	-	(71)	(76)	mA	1,2																																																																											
LED String Voltage	V_s	(39.6)	(42.6)	(45.6)	V	1,3																																																																											
Power Consumption	P_{ave}	-	(12.1)	(13.0)	Watt	2,5																																																																											
LED Life Time	LED_LT	30,000	-	-	Hrs	4																																																																											
Parameter	Symbol	Values			Unit	Notes																																																																											
		Min	Typ	Max																																																																													
LED String Current	I_s	-	(62)	(67)	mA	1,2																																																																											
LED String Voltage	V_s	(39.2)	(42.2)	(45.2)	V	1,3																																																																											
Power Consumption	P_{ave}	-	(10.5)	(11.2)	Watt	2,5																																																																											
LED Life Time	LED_LT	30,000	-	-	Hrs	4																																																																											
0.3	Sept.04 2023	27																																																																															
		28																																																																															
0.4	Sep.13 2023	28																																																																															

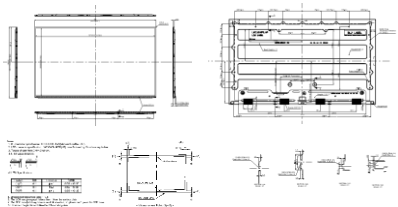
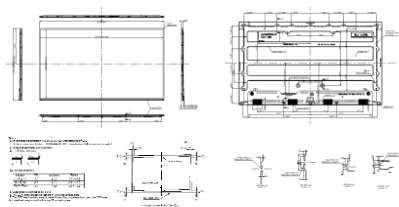


Product Specification

Record of Revisions

Revision No	Revision Date	Page	Before	After	Application Date																																																																																																																																																																																																																													
0.5	Dec. 11 2023	6, 25, 26, 27	Update the Outline, Thickness, Weight, Mechanical Drawing																																																																																																																																																																																																																															
																																																																																																																																																																																																																																		
0.6	Dec. 12. 2023	13	Update the notes about AC specification																																																																																																																																																																																																																															
			- . None	<p>Note: SSC (Max. ±3.0%), Modulation frequency (Max. 2000Hz). This SSC specifications are just T-CON operation specification. In case of various system condition, the optimum setting value of SSC can be different. LGD recommend the SI should be adjust the SSC deviation and modulation frequency in order not to happen any kinds of defect phenomenon.</p>																																																																																																																																																																																																																														
0.7	Dec. 13. 2023	16	Update Timing Table																																																																																																																																																																																																																															
			<table><tr><th>Item</th><th>Symbol</th><th>Symbol</th><th>Min</th><th>Typ</th><th>Max</th><th>Unit</th><th>Notes</th></tr><tr><td rowspan="2">DCLK</td><td>Period</td><td>tCLK</td><td>(8.51)</td><td>(14.74)</td><td>(18.82)</td><td>ns</td><td rowspan="2">Pixel frequency (Typ. 135.7 MHz)</td></tr><tr><td>Frequency</td><td>fCLK</td><td>(53.15)</td><td>(67.85)</td><td>(117.5)</td><td>MHz</td></tr><tr><td rowspan="6">Hsync</td><td>Period</td><td>thP</td><td>(1008)</td><td>(1028)</td><td>(1160)</td><td>tCLK</td><td rowspan="6">1,3,4</td></tr><tr><td>Horizontal Valid</td><td>thV</td><td>(960)</td><td>(960)</td><td>(960)</td><td>tCLK</td></tr><tr><td>Horizontal Blank</td><td>thB</td><td>(48)</td><td>(68)</td><td>(200)</td><td>tCLK</td></tr><tr><td>Frequency</td><td>fH</td><td>(51.7)</td><td>(66)</td><td>(110)</td><td>kHz</td></tr><tr><td>Width</td><td>tWH</td><td>(16)</td><td>(24)</td><td>(24)</td><td>tCLK</td></tr><tr><td>Horizontal Back Porch</td><td>thBP</td><td>(4)</td><td>(12)</td><td>(140)</td><td>tCLK</td></tr><tr><td rowspan="6">Vsync</td><td>Horizontal Front Porch</td><td>thFP</td><td>(28)</td><td>(32)</td><td>(36)</td><td>tCLK</td><td rowspan="6">2,4</td></tr><tr><td>Period</td><td>tVP</td><td>(1100)</td><td>(1100)</td><td>(2362)</td><td>thP</td></tr><tr><td>Vertical Valid</td><td>tVV</td><td>(1080)</td><td>(1080)</td><td>(1080)</td><td>thP</td></tr><tr><td>Vertical Blank</td><td>tVB</td><td>(20)</td><td>(20)</td><td>(1282)</td><td>thP</td></tr><tr><td>Frequency</td><td>fV</td><td>(47)</td><td>(60)</td><td>(100)</td><td>Hz</td></tr><tr><td>Width</td><td>tWV</td><td>(5)</td><td>(5)</td><td>(5)</td><td>thP</td></tr><tr><td rowspan="2"></td><td>Vertical Back Porch</td><td>tVBP</td><td>(12)</td><td>(12)</td><td>(1274)</td><td>thP</td><td rowspan="2"></td></tr><tr><td>Vertical Front Porch</td><td>tVFP</td><td>(3)</td><td>(3)</td><td>(3)</td><td>thP</td></tr></table>	Item	Symbol	Symbol	Min	Typ	Max	Unit	Notes	DCLK	Period	tCLK	(8.51)	(14.74)	(18.82)	ns	Pixel frequency (Typ. 135.7 MHz)	Frequency	fCLK	(53.15)	(67.85)	(117.5)	MHz	Hsync	Period	thP	(1008)	(1028)	(1160)	tCLK	1,3,4	Horizontal Valid	thV	(960)	(960)	(960)	tCLK	Horizontal Blank	thB	(48)	(68)	(200)	tCLK	Frequency	fH	(51.7)	(66)	(110)	kHz	Width	tWH	(16)	(24)	(24)	tCLK	Horizontal Back Porch	thBP	(4)	(12)	(140)	tCLK	Vsync	Horizontal Front Porch	thFP	(28)	(32)	(36)	tCLK	2,4	Period	tVP	(1100)	(1100)	(2362)	thP	Vertical Valid	tVV	(1080)	(1080)	(1080)	thP	Vertical Blank	tVB	(20)	(20)	(1282)	thP	Frequency	fV	(47)	(60)	(100)	Hz	Width	tWV	(5)	(5)	(5)	thP		Vertical Back Porch	tVBP	(12)	(12)	(1274)	thP		Vertical Front Porch	tVFP	(3)	(3)	(3)	thP	<table><tr><th>Item</th><th>Symbol</th><th>Symbol</th><th>Min</th><th>Typ</th><th>Max</th><th>Unit</th><th>Notes</th></tr><tr><td rowspan="2">DCLK</td><td>Period</td><td>tCLK</td><td>(8.51)</td><td>(14.74)</td><td>(18.82)</td><td>ns</td><td rowspan="2">Pixel frequency (Typ. 135.7 MHz)</td></tr><tr><td>Frequency</td><td>fCLK</td><td>(53.15)</td><td>(67.85)</td><td>(117.5)</td><td>MHz</td></tr><tr><td rowspan="6">Hsync</td><td>Period</td><td>thP</td><td>(1008)</td><td>(1028)</td><td>(1160)</td><td>tCLK</td><td rowspan="6">1,3,4</td></tr><tr><td>Horizontal Valid</td><td>thV</td><td>(960)</td><td>(960)</td><td>(960)</td><td>tCLK</td></tr><tr><td>Horizontal Blank</td><td>thB</td><td>(48)</td><td>(68)</td><td>(200)</td><td>tCLK</td></tr><tr><td>Frequency</td><td>fH</td><td>(51.7)</td><td>(66)</td><td>(110)</td><td>kHz</td></tr><tr><td>Width</td><td>tWH</td><td>(16)</td><td>(24)</td><td>(24)</td><td>tCLK</td></tr><tr><td>Horizontal Back Porch</td><td>thBP</td><td>(4)</td><td>(12)</td><td>(140)</td><td>tCLK</td></tr><tr><td rowspan="6">Vsync</td><td>Horizontal Front Porch</td><td>thFP</td><td>(28)</td><td>(32)</td><td>(36)</td><td>tCLK</td><td rowspan="6">2,4</td></tr><tr><td>Period</td><td>tVP</td><td>(1100)</td><td>(1100)</td><td>(2362)</td><td>thP</td></tr><tr><td>Vertical Valid</td><td>tVV</td><td>(1080)</td><td>(1080)</td><td>(1080)</td><td>thP</td></tr><tr><td>Vertical Blank</td><td>tVB</td><td>(20)</td><td>(20)</td><td>(1282)</td><td>thP</td></tr><tr><td>Frequency</td><td>fV</td><td>(47)</td><td>(60)</td><td>(101)</td><td>Hz</td></tr><tr><td>Width</td><td>tWV</td><td>(5)</td><td>(5)</td><td>(5)</td><td>thP</td></tr><tr><td rowspan="2"></td><td>Vertical Back Porch</td><td>tVBP</td><td>(12)</td><td>(12)</td><td>(1274)</td><td>thP</td><td rowspan="2"></td></tr><tr><td>Vertical Front Porch</td><td>tVFP</td><td>(3)</td><td>(3)</td><td>(3)</td><td>thP</td></tr></table>	Item	Symbol	Symbol	Min	Typ	Max	Unit	Notes	DCLK	Period	tCLK	(8.51)	(14.74)	(18.82)	ns	Pixel frequency (Typ. 135.7 MHz)	Frequency	fCLK	(53.15)	(67.85)	(117.5)	MHz	Hsync	Period	thP	(1008)	(1028)	(1160)	tCLK	1,3,4	Horizontal Valid	thV	(960)	(960)	(960)	tCLK	Horizontal Blank	thB	(48)	(68)	(200)	tCLK	Frequency	fH	(51.7)	(66)	(110)	kHz	Width	tWH	(16)	(24)	(24)	tCLK	Horizontal Back Porch	thBP	(4)	(12)	(140)	tCLK	Vsync	Horizontal Front Porch	thFP	(28)	(32)	(36)	tCLK	2,4	Period	tVP	(1100)	(1100)	(2362)	thP	Vertical Valid	tVV	(1080)	(1080)	(1080)	thP	Vertical Blank	tVB	(20)	(20)	(1282)	thP	Frequency	fV	(47)	(60)	(101)	Hz	Width	tWV	(5)	(5)	(5)	thP		Vertical Back Porch	tVBP	(12)	(12)	(1274)	thP		Vertical Front Porch	tVFP	(3)	(3)
Item	Symbol	Symbol	Min	Typ	Max	Unit	Notes																																																																																																																																																																																																																											
DCLK	Period	tCLK	(8.51)	(14.74)	(18.82)	ns	Pixel frequency (Typ. 135.7 MHz)																																																																																																																																																																																																																											
	Frequency	fCLK	(53.15)	(67.85)	(117.5)	MHz																																																																																																																																																																																																																												
Hsync	Period	thP	(1008)	(1028)	(1160)	tCLK	1,3,4																																																																																																																																																																																																																											
	Horizontal Valid	thV	(960)	(960)	(960)	tCLK																																																																																																																																																																																																																												
	Horizontal Blank	thB	(48)	(68)	(200)	tCLK																																																																																																																																																																																																																												
	Frequency	fH	(51.7)	(66)	(110)	kHz																																																																																																																																																																																																																												
	Width	tWH	(16)	(24)	(24)	tCLK																																																																																																																																																																																																																												
	Horizontal Back Porch	thBP	(4)	(12)	(140)	tCLK																																																																																																																																																																																																																												
Vsync	Horizontal Front Porch	thFP	(28)	(32)	(36)	tCLK	2,4																																																																																																																																																																																																																											
	Period	tVP	(1100)	(1100)	(2362)	thP																																																																																																																																																																																																																												
	Vertical Valid	tVV	(1080)	(1080)	(1080)	thP																																																																																																																																																																																																																												
	Vertical Blank	tVB	(20)	(20)	(1282)	thP																																																																																																																																																																																																																												
	Frequency	fV	(47)	(60)	(100)	Hz																																																																																																																																																																																																																												
	Width	tWV	(5)	(5)	(5)	thP																																																																																																																																																																																																																												
	Vertical Back Porch	tVBP	(12)	(12)	(1274)	thP																																																																																																																																																																																																																												
	Vertical Front Porch	tVFP	(3)	(3)	(3)	thP																																																																																																																																																																																																																												
Item	Symbol	Symbol	Min	Typ	Max	Unit	Notes																																																																																																																																																																																																																											
DCLK	Period	tCLK	(8.51)	(14.74)	(18.82)	ns	Pixel frequency (Typ. 135.7 MHz)																																																																																																																																																																																																																											
	Frequency	fCLK	(53.15)	(67.85)	(117.5)	MHz																																																																																																																																																																																																																												
Hsync	Period	thP	(1008)	(1028)	(1160)	tCLK	1,3,4																																																																																																																																																																																																																											
	Horizontal Valid	thV	(960)	(960)	(960)	tCLK																																																																																																																																																																																																																												
	Horizontal Blank	thB	(48)	(68)	(200)	tCLK																																																																																																																																																																																																																												
	Frequency	fH	(51.7)	(66)	(110)	kHz																																																																																																																																																																																																																												
	Width	tWH	(16)	(24)	(24)	tCLK																																																																																																																																																																																																																												
	Horizontal Back Porch	thBP	(4)	(12)	(140)	tCLK																																																																																																																																																																																																																												
Vsync	Horizontal Front Porch	thFP	(28)	(32)	(36)	tCLK	2,4																																																																																																																																																																																																																											
	Period	tVP	(1100)	(1100)	(2362)	thP																																																																																																																																																																																																																												
	Vertical Valid	tVV	(1080)	(1080)	(1080)	thP																																																																																																																																																																																																																												
	Vertical Blank	tVB	(20)	(20)	(1282)	thP																																																																																																																																																																																																																												
	Frequency	fV	(47)	(60)	(101)	Hz																																																																																																																																																																																																																												
	Width	tWV	(5)	(5)	(5)	thP																																																																																																																																																																																																																												
	Vertical Back Porch	tVBP	(12)	(12)	(1274)	thP																																																																																																																																																																																																																												
	Vertical Front Porch	tVFP	(3)	(3)	(3)	thP																																																																																																																																																																																																																												
0.8	Apr.04. 2024	8	Update Electrical Characteristics notes 4																																																																																																																																																																																																																															
			4) VLCD level must be measured between two points on PCB of LCM VLCD(test point) ~ LCM Ground. (Test condition: Maximum power pattern, 25°C, fV = 60Hz)	4) VLCD level must be measured between two points on PCB of LCM VLCD(test point) ~ LCM Ground. (Test condition: Maximum power pattern, 25°C, fV = 60Hz/100Hz)																																																																																																																																																																																																																														

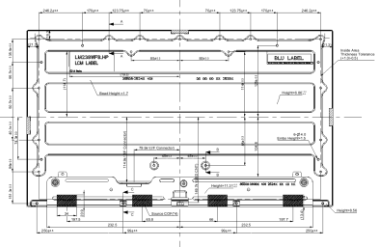
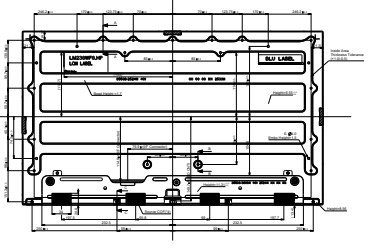
Product Specification

Record of Revisions

Revision No	Revision Date	Page	Before	After	Application Date																																																																									
			Update the Mechanical Drawing																																																																											
		27, 28																																																																												
		25	RGB Color Coordinates																																																																											
			<table><tr><td rowspan="10">Color Coordinates [CIE 1931] (By PR650)</td><td rowspan="2">Red</td><td>Rx</td><td></td><td>0.661</td><td rowspan="2">Typ</td><td rowspan="2">+0.03</td></tr><tr><td>Ry</td><td></td><td>0.327</td></tr><tr><td rowspan="2">Green</td><td>Gx</td><td></td><td>0.316</td><td rowspan="2">Typ</td><td rowspan="2">+0.03</td></tr><tr><td>Gy</td><td>-0.03</td><td>0.629</td></tr><tr><td rowspan="2">Blue</td><td>Bx</td><td></td><td>0.144</td><td rowspan="2">Typ</td><td rowspan="2">+0.03</td></tr><tr><td>By</td><td></td><td>0.058</td></tr><tr><td rowspan="2">White</td><td>Wx</td><td></td><td>0.313</td><td rowspan="2">Typ</td><td rowspan="2">+0.03</td></tr><tr><td>Wy</td><td></td><td>0.329</td></tr></table>	Color Coordinates [CIE 1931] (By PR650)	Red	Rx		0.661	Typ	+0.03	Ry		0.327	Green	Gx		0.316	Typ	+0.03	Gy	-0.03	0.629	Blue	Bx		0.144	Typ	+0.03	By		0.058	White	Wx		0.313	Typ	+0.03	Wy		0.329	<table><tr><td rowspan="10">Color Coordinates [CIE 1931] (By PR650)</td><td rowspan="2">Red</td><td>Rx</td><td></td><td>0.674</td><td rowspan="2">Typ</td><td rowspan="2">+0.03</td></tr><tr><td>Ry</td><td></td><td>0.314</td></tr><tr><td rowspan="2">Green</td><td>Gx</td><td></td><td>0.285</td><td rowspan="2">Typ</td><td rowspan="2">+0.03</td></tr><tr><td>Gy</td><td>-0.03</td><td>0.650</td></tr><tr><td rowspan="2">Blue</td><td>Bx</td><td></td><td>0.144</td><td rowspan="2">Typ</td><td rowspan="2">+0.03</td></tr><tr><td>By</td><td></td><td>0.057</td></tr><tr><td rowspan="2">White</td><td>Wx</td><td></td><td>0.313</td><td rowspan="2">Typ</td><td rowspan="2">+0.03</td></tr><tr><td>Wy</td><td></td><td>0.329</td></tr></table>	Color Coordinates [CIE 1931] (By PR650)	Red	Rx		0.674	Typ	+0.03	Ry		0.314	Green	Gx		0.285	Typ	+0.03	Gy	-0.03	0.650	Blue	Bx		0.144	Typ	+0.03	By		0.057	White	Wx		0.313	Typ	+0.03	Wy		0.329
Color Coordinates [CIE 1931] (By PR650)	Red	Rx				0.661	Typ	+0.03																																																																						
		Ry			0.327																																																																									
	Green	Gx			0.316	Typ	+0.03																																																																							
		Gy	-0.03		0.629																																																																									
	Blue	Bx			0.144	Typ	+0.03																																																																							
		By			0.058																																																																									
	White	Wx			0.313	Typ	+0.03																																																																							
		Wy			0.329																																																																									
	Color Coordinates [CIE 1931] (By PR650)	Red	Rx			0.674	Typ	+0.03																																																																						
			Ry		0.314																																																																									
Green		Gx		0.285	Typ	+0.03																																																																								
		Gy	-0.03	0.650																																																																										
Blue		Bx		0.144	Typ	+0.03																																																																								
		By		0.057																																																																										
White		Wx		0.313	Typ	+0.03																																																																								
		Wy		0.329																																																																										
0.9		May.14. 2024	27	Update the torque of user hole spec																																																																										
				<p>Notes</p> <ol style="list-style-type: none">1. IF connector specification: IS100-L300-C23(Manufactured by UAG)2. LED connector specification: 10025W5-H802(PF) manufactured by Yonitro or equivalent3. Torque of user hole: 3.0~4.0(kgf/cm)4-1. TR Value definition  <p>4-2. TR Specifications</p> <table><thead><tr><th>Position</th><th>Typ</th><th>Tolerance</th><th>Range</th></tr></thead><tbody><tr><td>(1)(2), Left</td><td>-0.1</td><td>±0.3</td><td>-0.4 ~ +0.2</td></tr><tr><td>(3)(4), Up</td><td>-0.1</td><td>±0.3</td><td>-0.4 ~ +0.2</td></tr><tr><td>(5)(6), Right</td><td>-0.1</td><td>±0.3</td><td>-0.4 ~ +0.2</td></tr></tbody></table> <p>5. Unspecified tolerance to be ± 0.5 6. The LCM wrap(wrapage) is less than 1.0 on the surface plate 7. The COF (emitting area) is weak & sensitive, so please don't press the COF area 8. Undefined height should follow the 3D modeling data.</p>	Position	Typ	Tolerance	Range	(1)(2), Left	-0.1	±0.3	-0.4 ~ +0.2	(3)(4), Up	-0.1	±0.3	-0.4 ~ +0.2	(5)(6), Right	-0.1	±0.3	-0.4 ~ +0.2	<p>Notes</p> <ol style="list-style-type: none">1. IF connector specification: IS100-L300-C23(Manufactured by UAG)2. LED connector specification: 10025W5-H802(PF) manufactured by Yonitro or equivalent3. Torque of user hole: 3.0~4.0(kgf/cm)4-1. TR Value definition  <p>4-2. TR Specifications</p> <table><thead><tr><th>Position</th><th>Typ</th><th>Tolerance</th><th>Range</th></tr></thead><tbody><tr><td>(1)(2), Left</td><td>-0.1</td><td>± 0.3</td><td>-0.4 ~ +0.2</td></tr><tr><td>(3)(4), Up</td><td>-0.1</td><td>± 0.3</td><td>-0.4 ~ +0.2</td></tr><tr><td>(5)(6), Right</td><td>-0.1</td><td>± 0.3</td><td>-0.4 ~ +0.2</td></tr></tbody></table> <p>5. Unspecified tolerance to be ± 0.5 6. The LCM wrap(wrapage) is less than 1.0 on the surface plate 7. The COF (emitting area) is weak & sensitive, so please don't press the COF area 8. Undefined height should follow the 3D modeling data.</p>	Position	Typ	Tolerance	Range	(1)(2), Left	-0.1	± 0.3	-0.4 ~ +0.2	(3)(4), Up	-0.1	± 0.3	-0.4 ~ +0.2	(5)(6), Right	-0.1	± 0.3	-0.4 ~ +0.2																																									
Position	Typ	Tolerance	Range																																																																											
(1)(2), Left	-0.1	±0.3	-0.4 ~ +0.2																																																																											
(3)(4), Up	-0.1	±0.3	-0.4 ~ +0.2																																																																											
(5)(6), Right	-0.1	±0.3	-0.4 ~ +0.2																																																																											
Position	Typ	Tolerance	Range																																																																											
(1)(2), Left	-0.1	± 0.3	-0.4 ~ +0.2																																																																											
(3)(4), Up	-0.1	± 0.3	-0.4 ~ +0.2																																																																											
(5)(6), Right	-0.1	± 0.3	-0.4 ~ +0.2																																																																											
		22	White Color Coordinates (Min, Max)																																																																											
1.0	May.15. 2024		<table><tr><td rowspan="10">Color Coordinates [CIE 1931] (By PR650)</td><td rowspan="2">Red</td><td>Rx</td><td></td><td>0.674</td><td rowspan="2">Typ</td><td rowspan="2">+0.03</td></tr><tr><td>Ry</td><td></td><td>0.314</td></tr><tr><td rowspan="2">Green</td><td>Gx</td><td></td><td>0.285</td><td rowspan="2">Typ</td><td rowspan="2">+0.03</td></tr><tr><td>Gy</td><td>-0.03</td><td>0.650</td></tr><tr><td rowspan="2">Blue</td><td>Bx</td><td></td><td>0.144</td><td rowspan="2">Typ</td><td rowspan="2">+0.03</td></tr><tr><td>By</td><td></td><td>0.057</td></tr><tr><td rowspan="2">White</td><td>Wx</td><td></td><td>0.313</td><td rowspan="2">Typ</td><td rowspan="2">+0.025</td></tr><tr><td>Wy</td><td>-0.025</td><td>0.329</td></tr></table>	Color Coordinates [CIE 1931] (By PR650)	Red	Rx		0.674	Typ	+0.03	Ry		0.314	Green	Gx		0.285	Typ	+0.03	Gy	-0.03	0.650	Blue	Bx		0.144	Typ	+0.03	By		0.057	White	Wx		0.313	Typ	+0.025	Wy	-0.025	0.329	<table><tr><td rowspan="10">Color Coordinates [CIE 1931] (By PR650)</td><td rowspan="2">Red</td><td>Rx</td><td></td><td>0.674</td><td rowspan="2">Typ</td><td rowspan="2">+0.03</td></tr><tr><td>Ry</td><td></td><td>0.314</td></tr><tr><td rowspan="2">Green</td><td>Gx</td><td></td><td>0.285</td><td rowspan="2">Typ</td><td rowspan="2">+0.03</td></tr><tr><td>Gy</td><td>-0.03</td><td>0.650</td></tr><tr><td rowspan="2">Blue</td><td>Bx</td><td></td><td>0.144</td><td rowspan="2">Typ</td><td rowspan="2">+0.03</td></tr><tr><td>By</td><td></td><td>0.057</td></tr><tr><td rowspan="2">White</td><td>Wx</td><td></td><td>0.313</td><td rowspan="2">Typ</td><td rowspan="2">+0.025</td></tr><tr><td>Wy</td><td>-0.025</td><td>0.329</td></tr></table>	Color Coordinates [CIE 1931] (By PR650)	Red	Rx		0.674	Typ	+0.03	Ry		0.314	Green	Gx		0.285	Typ	+0.03	Gy	-0.03	0.650	Blue	Bx		0.144	Typ	+0.03	By		0.057	White	Wx		0.313	Typ	+0.025	Wy	-0.025	0.329
Color Coordinates [CIE 1931] (By PR650)	Red	Rx				0.674	Typ	+0.03																																																																						
		Ry			0.314																																																																									
	Green	Gx			0.285	Typ	+0.03																																																																							
		Gy	-0.03		0.650																																																																									
	Blue	Bx			0.144	Typ	+0.03																																																																							
		By			0.057																																																																									
	White	Wx			0.313	Typ	+0.025																																																																							
		Wy	-0.025		0.329																																																																									
	Color Coordinates [CIE 1931] (By PR650)	Red	Rx			0.674	Typ	+0.03																																																																						
			Ry		0.314																																																																									
Green		Gx		0.285	Typ	+0.03																																																																								
		Gy	-0.03	0.650																																																																										
Blue		Bx		0.144	Typ	+0.03																																																																								
		By		0.057																																																																										
White		Wx		0.313	Typ	+0.025																																																																								
		Wy	-0.025	0.329																																																																										
-			-	Final CAS Release																																																																										

Product Specification

Record of Revisions

Revision No	Revision Date	Page	Before	After	Application Date
1.1	May.21. 2024	29	Update the Mechanical Drawing		
					

Product Specification

1. General Description

LM238WF8 is a color active matrix liquid crystal display with a Light Emitting Diode(LED) backlight assembly without LED driver. The matrix employs a-Si thin film transistor as the active element. It is a transmissive type display operating in the normally black mode. It has a 23.8 inch diagonally measured active display area with FHD resolution(1920 horizontal by 1080 vertical pixel array). Each pixel is divided into red, green and blue sub-pixels or dots which are arranged in vertical stripes. Gray scale or the brightness of the sub-pixel color is determined with a 8-bit gray scale signal for each dot, thus, presenting a palette of more than 16.78 Million colors with A-FRC (Advanced Frame Rate Control). It has been designed to apply 8-bit 2port LVDS interface. It is intended to support displays where high brightness, super wide viewing angle, high color saturation, and high color are important.

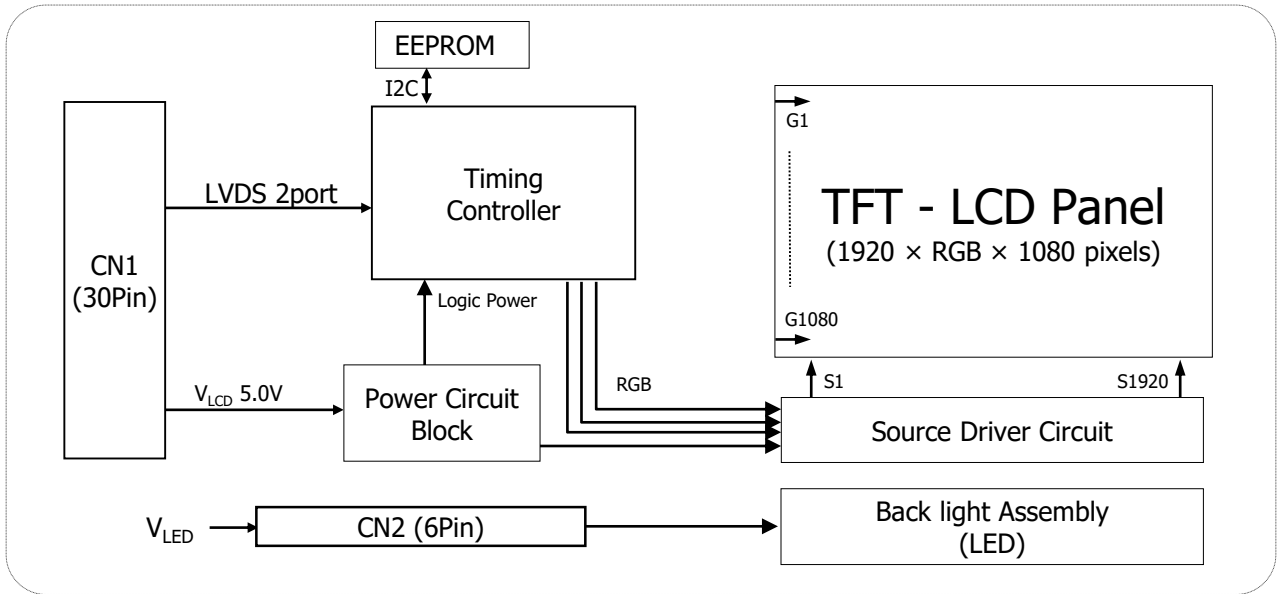


FIG.1 Block Diagram

General Features

Active Screen Size	23.8 inches(60.47 cm)(Aspect ratio 16:9)
Outline Dimension	535.0(H) x 309.36(V) x 11.31(D) mm(Typ.)
Pixel Pitch	0.2745(H) x 0.2745(V) mm
Pixel Format	1920(H) x 1080(V) Pixels. RGB stripes arrangement.
Color Depth	16.78 Million colors, 8 Bit(6 Bit + A-FRC)
Luminance, White	350 cd/m ² (Center 1Point, Typ.)
Viewing Angle(CR>10)	R/L 178° (Typ.), U/D 178° (Typ.)
Power Consumption	Total 12.15 Watt (Typ.)(1.65 Watt@ Mosaic_V _{LCD} , 10.5 Watt@ Is = 62mA)
Weight	1,870g (Typ.)
Display Operating Mode	Transmissive mode, Normally black
Panel type	Reverse type
Surface Treatment	Anti-Glare treatment of the front polarizer(Haze25%, 3H)
Low Blue Light Panel	The ratio of light in the range from 415nm - 455nm compared to 400nm - 500nm shall be less than 50%

Product Specification

2. Absolute Maximum Ratings

The following are maximum values which, if exceeded, may cause faulty operation or damage to the unit.

Table 2-1. Absolute Maximum Ratings

Parameter	Symbol	Values		Units	Notes
		Min	Max		
Power Supply Input Voltage	V_{LCD}	-0.3	+6.0	V_{DC}	At 25°C
Operating Temperature	T_{OP}	0	50	°C	1,2,3
Storage Temperature	T_{ST}	-20	60	°C	
Operating Ambient Humidity	H_{OP}	10	90	%RH	
Storage Humidity	H_{ST}	10	90	%RH	
LCM Surface Temperature(Operation)	$T_{surface}$	0	65	°C	1,4

Notes:

- 1) Temperature and relative humidity range are shown in the figure below.
Wet bulb temperature should be 39°C Max, and no condensation of water.
- 2) Maximum storage humidity is up to 40°C, 70% RH only for 4 corner light leakage mura.
- 3) Storage condition is guaranteed under packing condition.
- 4) LCM surface temperature should be measured under the condition of $V_{LCD} = Typ$, $f_v = 60Hz$, $T_a = 25°C$, no humidity and typical LED string current.

* f_v = Frame frequency
* T_a = Ambient temperature

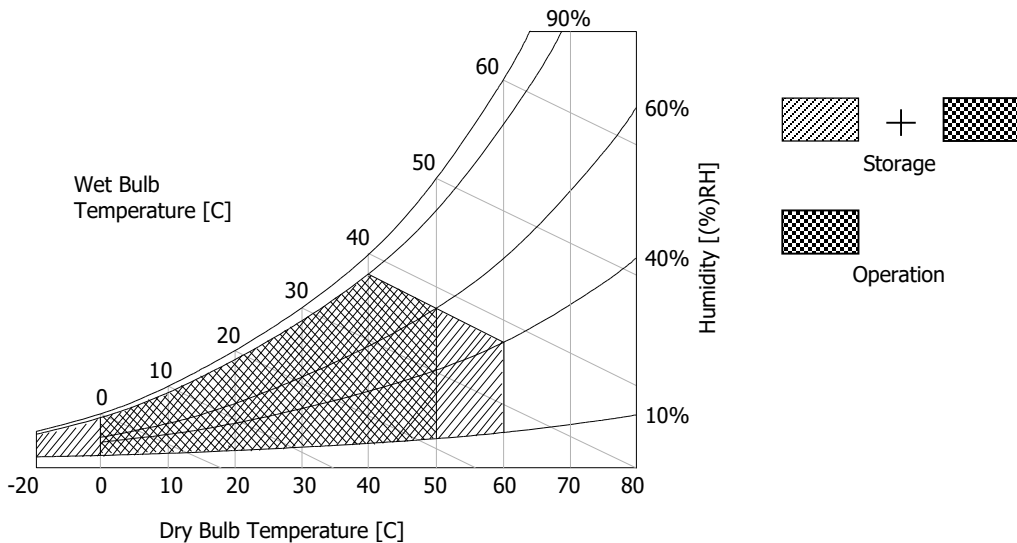


FIG.2 Temperature And Relative Humidity

Product Specification

3. Electrical Specifications

3-1. Electrical Characteristics

It requires two power inputs. One is employed to power the LCD electronics and to drive the TFT array and liquid crystal. The other input power for the LED/Backlight, is typically generated by a LED Driver. The LED Driver is an external unit to the LCDs.

Table 3-1. Electrical Characteristics

Parameter	Symbol	Values			Unit	Notes
		Min	Typ	Max		
Module:						
Power Supply Input voltage	V _{LCD}	4.5	5.0	5.5	Vdc	4
Permissive Power Input Ripple	V _{RIPPLE}	-		400	mVp-p	1
Power Supply Input Current	I _{LCD} Typ.	-	330	410	mA	2 (f _V =60Hz)
	I _{LCD} Max.	-	500	688	mA	
	I _{LCD} White.	-	360	450	mA	
Power Consumption	P _{LCD} Typ.	-	1.65	2.05	W	
	P _{LCD} Max.	-	2.5	3.44	W	
	P _{LCD} White.	-	1.80	2.25	W	
Power Supply Input Current	I _{LCD} Typ.	-	470	580	mA	2 (f _V =100Hz)
	I _{LCD} Max.	-	850	1,064	mA	
	I _{LCD} White.	-	476	590	mA	
Power Consumption	P _{LCD} Typ.	-	2.35	2.90	W	
	P _{LCD} Max.	-	4.25	5.32	W	
	P _{LCD} White.	-	2.38	2.95	W	
Rush Current	I _{RUSH}	-	-	4.0	A	3

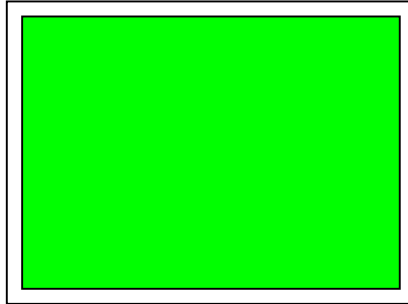
Notes:

- 1) Permissive power ripple should be measured under the condition of $V_{LCD} = \text{Typ}$, $25 \pm 2^\circ\text{C}$, $f_V = \text{Max}$. Refer to page 7 for the pattern and more information.
- 2) The specified current and power consumption can be measured under the $V_{LCD} = \text{Typ}$, $25 \pm 2^\circ\text{C}$, and the pattern should be changed according to the typical or maximum power condition. The max. current can be measured only with the maximum power pattern. See the page 7 for details.
- 3) Maximum condition of inrush current:
The duration of rush current is about 5ms and rising time of power input is $500\mu\text{s} \pm 20\%$ (Min).
- 4) V_{LCD} level must be measured between two points on PCB of LCM V_{LCD} (test point) ~ LCM Ground.
(Test condition: Maximum power pattern, 25°C , $f_V = 60\text{Hz}/100\text{Hz}$)

- f_V = Frame frequency

Product Specification

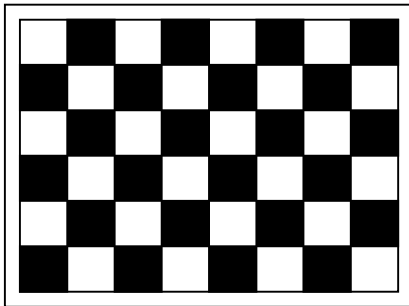
- **Permissive Power Input Ripple**($V_{LCD} = \text{Typ}$, 25°C , $f_V(\text{frame frequency}) = \text{Max condition}$)



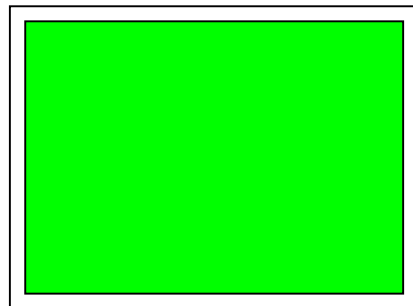
Full Green Pattern

For the exact ripple measurement, the condition of Max 20MHz is recommended in the bandwidth configuration of oscilloscope.

- **Power Consumption**($V_{LCD} = \text{Typ}$, 25°C , $f_V(\text{frame frequency}) = 60\text{Hz condition}$)



Typical Power Pattern



Maximum Power Pattern

FIG.3-1 Mosaic Pattern & Full Green Pattern For Power Consumption Measurement

Product Specification

Table 3-2. LED Bar Electrical Characteristics

Parameter	Symbol	Values			Unit	Notes
		Min	Typ	Max		
LED String Current	Is	-	62	67	mA	1,2
LED String Voltage	Vs	39.2	42.2	45.2	V	1,3
Power Consumption	PBar	-	10.5	11.2	Watt	2,5
LED Life Time	LED_LT	30,000	-	-	Hrs	4

Note: The LED consists of 60 LED packages, 4 strings(parallel) x 15 packages(serial) x 1 bar

Notes:

- 1) The specified values are for single LED bar.
- 2) The specified current is defined as the input current for single LED string with 100% duty cycle.
- 3) The specified voltage is the input LED string voltage at typical current 100% duty cycle.
- 4) The LED life time is defined as the when brightness of LED itself reach to the 50% of initial value under the conditions at $T_a = 25 \pm 2^\circ\text{C}$ and typical LED string current.
- 5) The power consumption shown above does not include the loss of external LED driver.
 The typical power consumption is calculated as $P_{\text{bar}} = V_s(\text{Typ.}) \times I_s(\text{Typ.}) \times \text{No. of strings.}$
 The maximum power consumption is calculated as $P_{\text{bar}} = V_s(\text{Max.}) \times I_s(\text{Typ.}) \times \text{No. of strings.}$

Product Specification

3-2. Interface Connections

3-2-1. LCD Module

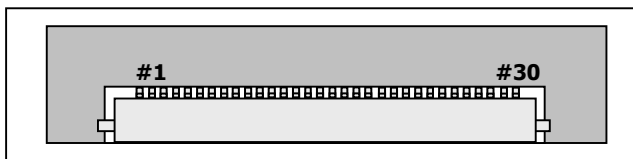
- LCD Connector(Receptacle): IS100-L300-C23(Manufactured by UJU)
- Mating Connector(Plug): FI-X30C2L(Manufactured by JAE) or equivalent

Table 3-3. Module Connector(CN1) Pin Configuration

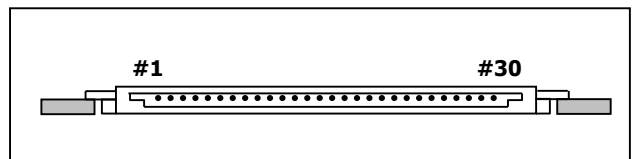
No	Symbol	Description	No	Symbol	Symbol
1	RX00-	Minus signal of odd channel 0(LVDS)	16	RXE1+	Plus signal of even channel 1(LVDS)
2	RX00+	Plus signal of odd channel 0(LVDS)	17	GND	Ground
3	RX01-	Minus signal of odd channel 1(LVDS)	18	RXE2-	Minus signal of even channel 2(LVDS)
4	RX01+	Plus signal of odd channel 1(LVDS)	19	RXE2+	Plus signal of even channel 2(LVDS)
5	RX02-	Minus signal of odd channel 2(LVDS)	20	RXEC-	Minus signal of even clock channel(LVDS)
6	RX02+	Plus signal of odd channel 2(LVDS)	21	RXEC+	Plus signal of even clock channel(LVDS)
7	GND	Ground	22	RXE3-	Minus signal of even channel 3(LVDS)
8	RXOC-	Minus signal of odd clock channel(LVDS)	23	RXE3+	Plus signal of even channel 3(LVDS)
9	RXOC+	Plus signal of odd clock channel(LVDS)	24	GND	Ground
10	RX03-	Minus signal of odd channel 3(LVDS)	25	NC	No Connection(I2C serial interface for LCM:SCL)
11	RX03+	Plus signal of odd channel 3(LVDS)	26	NC	No Connection(I2C serial interface for LCM:SDA)
12	RXE0-	Minus signal of even channel 0(LVDS)	27	ITLC	Interlace image sticking reduction mode selection
13	RXE0+	Plus signal of even channel 0(LVDS)	28	V _{LCD}	Power Supply +5.0V
14	GND	Ground	29	V _{LCD}	Power Supply +5.0V
15	RXE1-	Minus signal of even channel 1(LVDS)	30	V _{LCD}	Power Supply +5.0V

Notes:

- 1) All GND(ground) pins should be connected together to the LCD module's metal frame.
- 2) All V_{LCD}(power input) pins should be connected together.
- 3) All input level of LVDS signals are based on the EIA 644 standard.
- 4) ITLC is used for image sticking reduction in interlace mode.
(L: Normal mode, H: Interlace image sticking reduction mode)
This pin should be connected to GND in normal mode.
(Low level Input Voltage : GND ~ 0.4V, High level Input Voltage : 1.6 ~ 3.6V)



IS100-L300-C23



Rear view of LCM

Product Specification

Required signal assignment for flat link(TI:SN75LVDS83) transmitter

No	Pin Name	Required Signal	No	Pin Name	Required Signal
1	VCC	Power supply for TTL Input	29	GND	Ground pin for TTL
2	D5	TTL Input(R7)	30	D26	TTL Input(DE)
3	D6	TTL Input(R5)	31	Tx CLKIN	TTL Level clock Input
4	D7	TTL Input(G0)	32	PWR DWN	Power down Input
5	GND	Ground pin for TTL	33	PLL GND	Ground pin for PLL
6	D8	TTL Input(G1)	34	PLL VCC	Power supply for PLL
7	D9	TTL Input(G2)	35	PLL GND	Ground pin for PLL
8	D10	TTL Input(G6)	36	LVDS GND	Ground pin for LVDS
9	VCC	Power supply for TTL Input	37	Tx OUT3 +	Positive LVDS differential data output 3
10	D11	TTL Input(G7)	38	Tx OUT3 -	Negative LVDS differential data output 3
11	D12	TTL Input(G3)	39	Tx CLKOUT +	Positive LVDS differential clock output
12	D13	TTL Input(G4)	40	Tx CLKOUT -	Negative LVDS differential clock output
13	GND	Ground pin for TTL	41	Tx OUT2 +	Positive LVDS differential data output 2
14	D14	TTL Input(G5)	42	Tx OUT2 -	Negative LVDS differential data output 2
15	D15	TTL Input(B0)	43	LVDS GND	Ground pin for LVDS
16	D16	TTL Input(B6)	44	LVDS VCC	Power supply for LVDS
17	VCC	Power supply for TTL Input	45	Tx OUT1 +	Positive LVDS differential data output 1
18	D17	TTL Input(B7)	46	Tx OUT1 -	Negative LVDS differential data output 1
19	D18	TTL Input(B1)	47	Tx OUT0 +	Positive LVDS differential data output 0
20	D19	TTL Input(B2)	48	Tx OUT0 -	Negative LVDS differential data output 0
21	GND	Ground pin for TTL Input	49	LVDS GND	Ground pin for LVDS
22	D20	TTL Input(B3)	50	D27	TTL Input(R6)
23	D21	TTL Input(B4)	51	D0	TTL Input(R0)
24	D22	TTL Input(B5)	52	D1	TTL Input(R1)
25	D23	TTL Input(RSVD)	53	GND	Ground pin for TTL
26	VCC	Power supply for TTL Input	54	D2	TTL Input(R2)
27	D24	TTL Input(HSYNC)	55	D3	TTL Input(R3)
28	D25	TTL Input(VSYNC)	56	D4	TTL Input(R4)

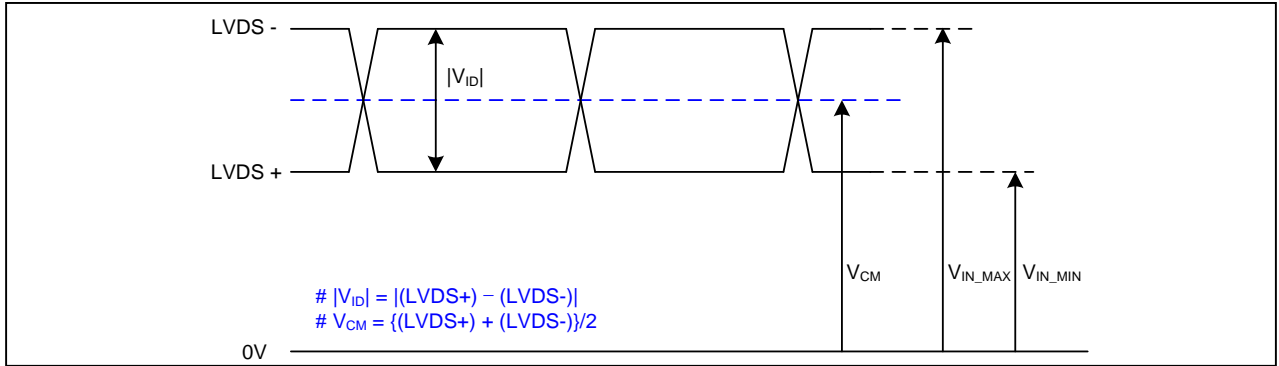
Notes:

- 1) Refer to LVDS transmitter data sheet for detail description.
- 2) 7 means MSB and 0 means LSB at R,G,B pixel data.

Product Specification

3-2-2. LVDS Signal Specifications

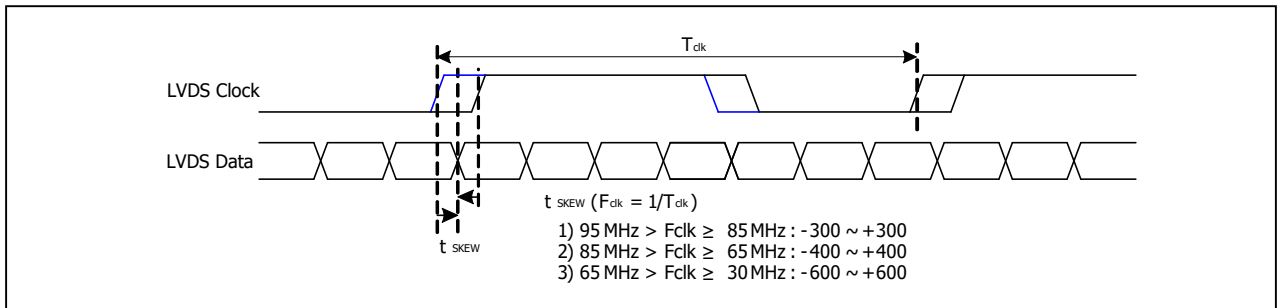
1. DC Specification



Parameter	Symbol	Min	Max	Unit	Notes
LVDS Differential voltage	$ V_{ID} $	150	600	mV	
LVDS Common mode voltage	V_{CM}	1.0	1.5	V	
LVDS Input voltage range	V_{IN}	0.7	1.8	V	
Change in common mode voltage	ΔV_{CM}	-	250	mV	

Notes: Does not have any Noise & Peaking in LVDS Signal.

2. AC Specification



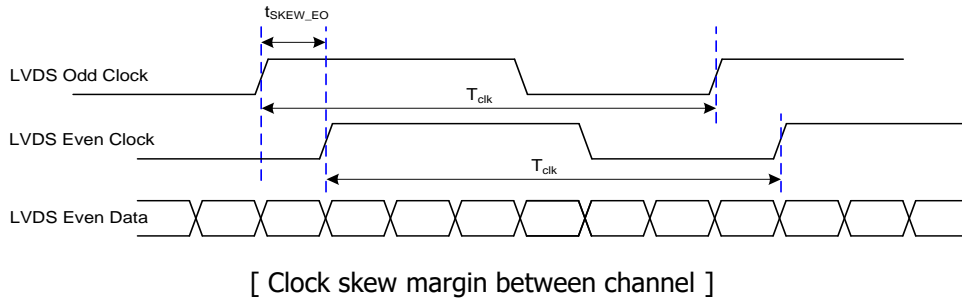
Parameter	Symbol	Min	Max	Unit	Notes
LVDS Clock to data skew margin	t_{SKEW}	- 300	+ 300	ps	95MHz > Fclk ≥ 85MHz
	t_{SKEW}	- 400	+ 400	ps	85MHz > Fclk ≥ 65MHz
	t_{SKEW}	- 600	+ 600	ps	65MHz > Fclk ≥ 30MHz
LVDS Clock to clock skew margin(Even to odd)	t_{SKEW_EO}	- 1/7	+ 1/7	T_{clk}	-

Note:

SSC (Max. ±3.0%), Modulation frequency (Max. 200KHz).

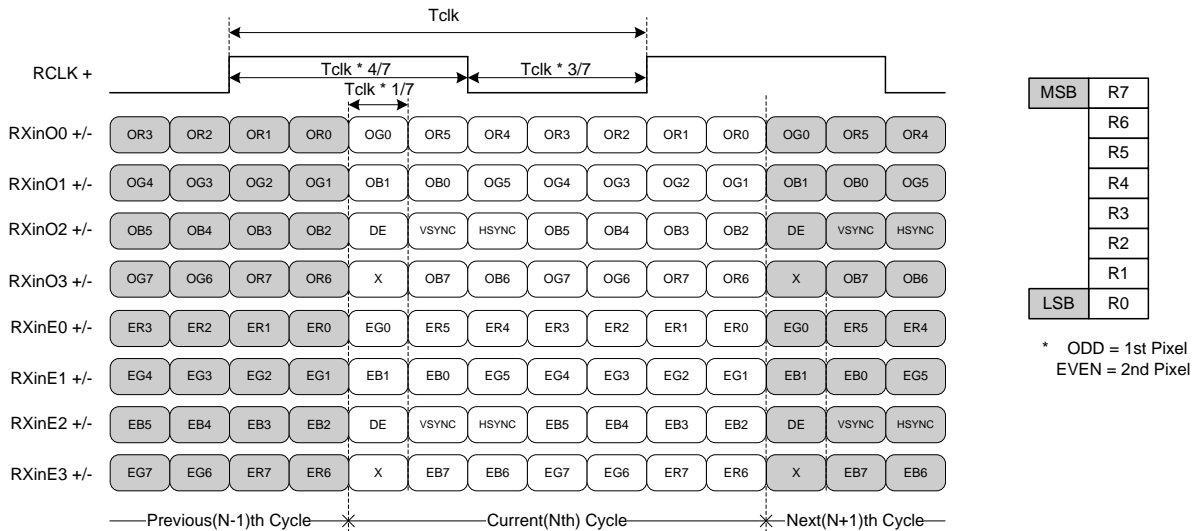
This SSC specifications are just T-CON operation specification. In case of various system condition, the optimum setting value of SSC can be different. LGD recommend the SI should be adjust the SSC deviation and modulation frequency in order not to happen any kinds of defect phenomenon.

Product Specification



3. Data Format

1) LVDS 2 Port



3-2-3. Backlight Connector Pin Configuration

The LED interface connector is 10035WS-H06D(HF)_wire-locking type manufactured by Yeonho or equivalent. The mating connector is a SHJP-06V-S(HF) or 10035HS-H06C(HF) or equivalent. The pin configuration for the connector is shown in the table below.

Table 3-4. LED Connector Pin Configuration

Pin	Symbol	Description	Notes
1	FB1	Channel1 current feedback	
2	FB2	Channel2 current feedback	
3	VLED	LED power supply (Common anode)	
4	VLED	LED power supply (Common anode)	
5	FB3	Channel3 current feedback	
6	FB4	Channel4 current feedback	

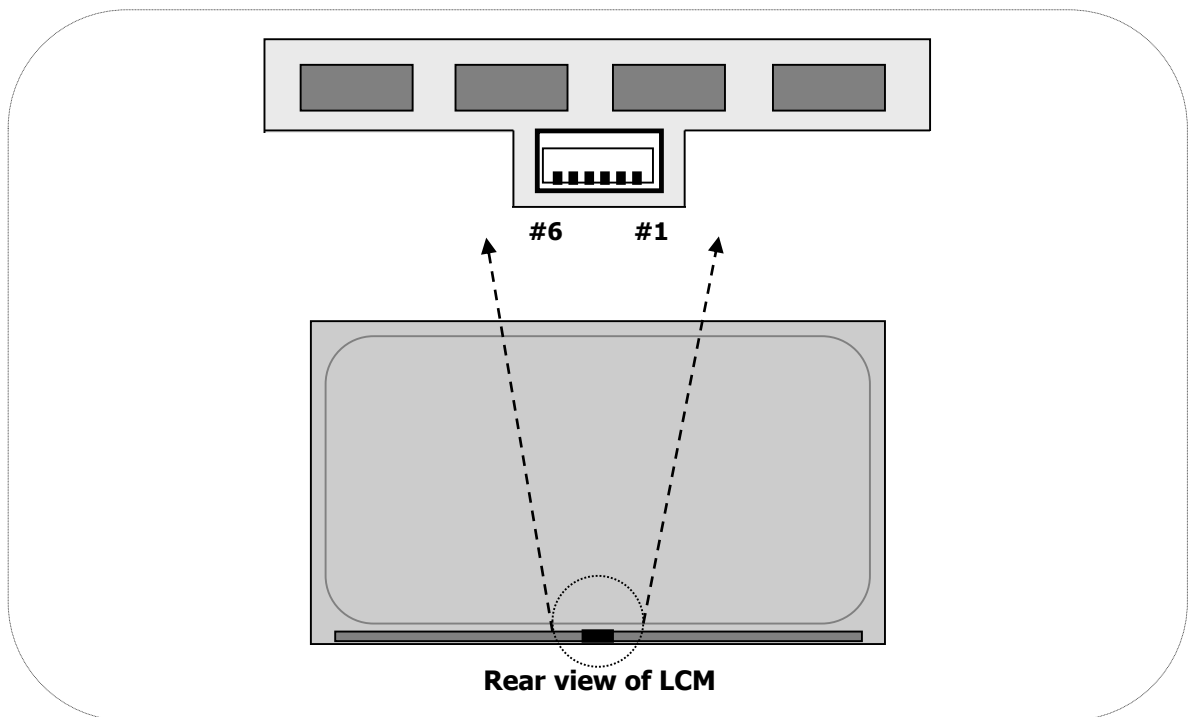


FIG.3-2 Backlight Connector View

Product Specification

3-3. Signal Timing Specifications

This is the signal timing requirement from the signal transmitter. All of the interface signal timing should be satisfied with the following specifications for its proper operation.

Table 3-5. Timing Table

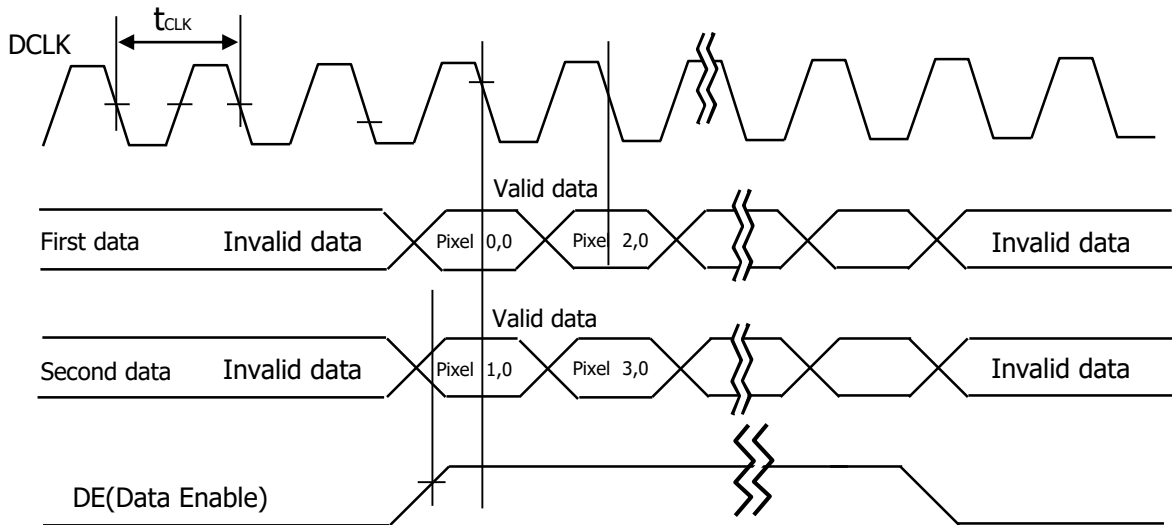
Item	Symbol	Symbol	Min	Typ	Max	Unit	Notes
DCLK	Period	tCLK	8.51	14.74	18.82	ns	Pixel frequency (Typ. 135.7 MHz)
	Frequency	fCLK	53.15	67.85	117.5	MHz	
Hsync	Period	tHP	1008	1028	1160	tCLK	1,3,4
	Horizontal Valid	tHV	960	960	960	tCLK	
	Horizontal Blank	tHB	48	68	200	tCLK	
	Frequency	fH	51.7	66	110	kHz	
	Width	tWH	16	24	24	tCLK	
	Horizontal Back Porch	tHBP	4	12	140	tCLK	
	Horizontal Front Porch	tHFP	28	32	36	tCLK	
Vsync	Period	tVP	1100	1100	2362	tHP	2,4
	Vertical Valid	tVV	1080	1080	1080	tHP	
	Vertical Blank	tVB	20	20	1282	tHP	
	Frequency	fV	47	47	101	Hz	
	Width	tWV	5	5	5	tHP	
	Vertical Back Porch	tVBP	12	12	1274	tHP	
	Vertical Front Porch	tVFP	3	3	3	tHP	

Notes:

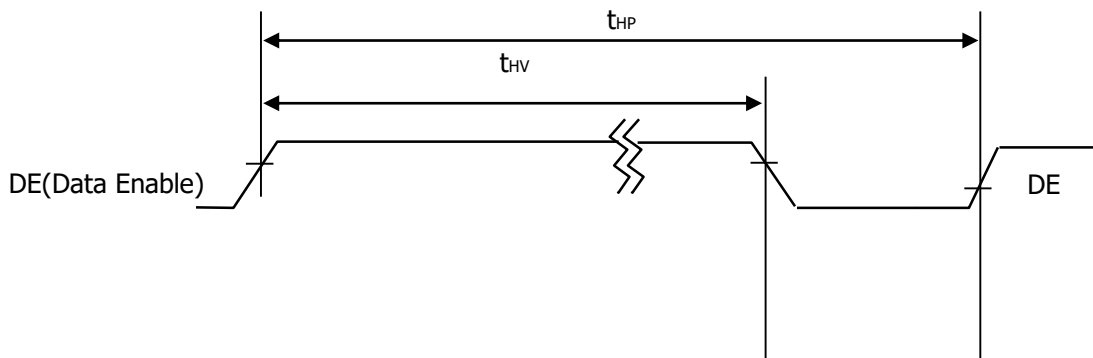
- 1) The value of Hsync Period, Hsync Width and Hsync valid should be even number times of tCLK. If the value is odd number times of tCLK, it can make asynchronous signal timing and cause abnormal display.
- 2) The performance of the electro-optical characteristics may be influenced by variance of the vertical refresh rates.
- 3) The value of Hsync Period, Hsync Width, and Horizontal Back Porch should be divided by 4 without a remainder.
- 4) The polarity of Hsync, Vsync is not restricted.

3-4. Signal Timing Waveforms

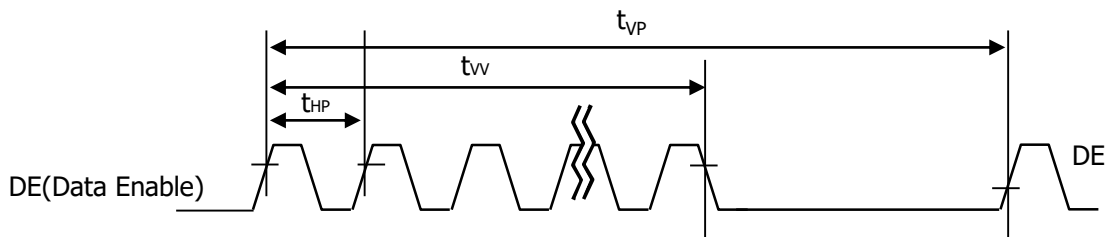
1. DCLK, DE, DATA waveforms



2. Horizontal waveform



3. Vertical waveform



Product Specification

3-5. Color Data Reference

The brightness of each primary color(Red,Green,Blue) is based on the 8-bit gray scale data input for the color; the higher the binary input, the brighter the color.
The table below provides a reference for color versus data input.

Table 3-6. Color Data Reference

Color		Input Color Data																							
		RED								GREEN								BLUE							
		MSB						LSB		MSB						LSB		MSB						LSB	
		R7	R6	R5	R4	R3	R2	R1	R0	G7	G6	G5	G4	G3	G2	G1	G0	B7	B6	B5	B4	B3	B2	B1	B0
Basic Color	Black	0	0	0	0	0	0	0	0	0	0	0	0	0	0	0	0	0	0	0	0	0	0	0	0
	Red (255)	1	1	1	1	1	1	1	1	0	0	0	0	0	0	0	0	0	0	0	0	0	0	0	0
	Green (255)	0	0	0	0	0	0	0	0	1	1	1	1	1	1	1	1	0	0	0	0	0	0	0	0
	Blue (255)	0	0	0	0	0	0	0	0	0	0	0	0	0	0	0	0	1	1	1	1	1	1	1	1
	Cyan	0	0	0	0	0	0	0	0	1	1	1	1	1	1	1	1	1	1	1	1	1	1	1	1
	Magenta	1	1	1	1	1	1	1	1	0	0	0	0	0	0	0	0	1	1	1	1	1	1	1	1
	Yellow	1	1	1	1	1	1	1	1	1	1	1	1	1	1	1	1	0	0	0	0	0	0	0	0
	White	1	1	1	1	1	1	1	1	1	1	1	1	1	1	1	1	1	1	1	1	1	1	1	1
RED	RED (0)	0	0	0	0	0	0	0	0	0	0	0	0	0	0	0	0	0	0	0	0	0	0	0	0
	RED (1)	0	0	0	0	0	0	0	1	0	0	0	0	0	0	0	0	0	0	0	0	0	0	0	0
							
	RED (254)	1	1	1	1	1	1	1	0	0	0	0	0	0	0	0	0	0	0	0	0	0	0	0	0
	RED (255)	1	1	1	1	1	1	1	1	0	0	0	0	0	0	0	0	0	0	0	0	0	0	0	0
GREEN	GREEN (0)	0	0	0	0	0	0	0	0	0	0	0	0	0	0	0	0	0	0	0	0	0	0	0	0
	GREEN (1)	0	0	0	0	0	0	0	0	0	0	0	0	0	0	0	1	0	0	0	0	0	0	0	0
							
	GREEN (254)	0	0	0	0	0	0	0	0	1	1	1	1	1	1	1	0	0	0	0	0	0	0	0	0
	GREEN (255)	0	0	0	0	0	0	0	0	1	1	1	1	1	1	1	1	0	0	0	0	0	0	0	0
BLUE	BLUE (0)	0	0	0	0	0	0	0	0	0	0	0	0	0	0	0	0	0	0	0	0	0	0	0	0
	BLUE (1)	0	0	0	0	0	0	0	0	0	0	0	0	0	0	0	0	0	0	0	0	0	0	1	1
							
	BLUE (254)	0	0	0	0	0	0	0	0	0	0	0	0	0	0	0	0	1	1	1	1	1	1	1	0
	BLUE (255)	0	0	0	0	0	0	0	0	0	0	0	0	0	0	0	0	1	1	1	1	1	1	1	1

3-6. Power Sequence

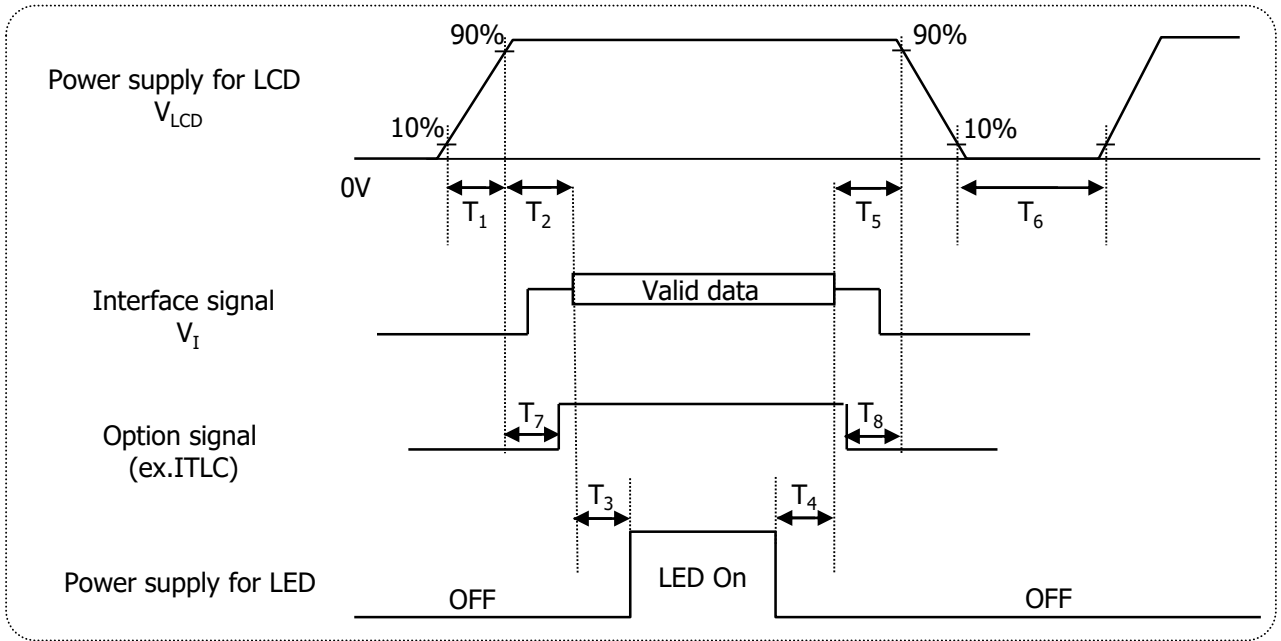


Table 3-7. Power Sequence

Parameter	Values			Units
	Min.	Typ.	Max.	
T_1	0.5	-	10	ms
T_2	0.01	-	50	ms
T_3	500	-	-	ms
T_4	200	-	-	ms
T_5	0.01	-	50	ms
T_6	1000	-	-	ms
T_7	0.5	-	T2	ms
T_8	0	-	-	ms

Notes:

- Power sequence should be kept all the time including below cases for normal operation.
 - AC/DC Power On/Off
 - Mode change (resolution, frequency, timing, sleep mode, color depth change, etc.)
 The violation of power sequence can cause a significant trouble in display and reliability.
- Please avoid floating state of interface signal during signal invalid period.
- When the interface signal is invalid, be sure to pull down the V_{LCD} (0V)
- Please turn off the power supply for LED when the level of V_{LCD} changes to prevent noise issue.
- When measuring valid data starting point, it can be measured that LVDS signal starts swing.

3-7. Power Dip Condition

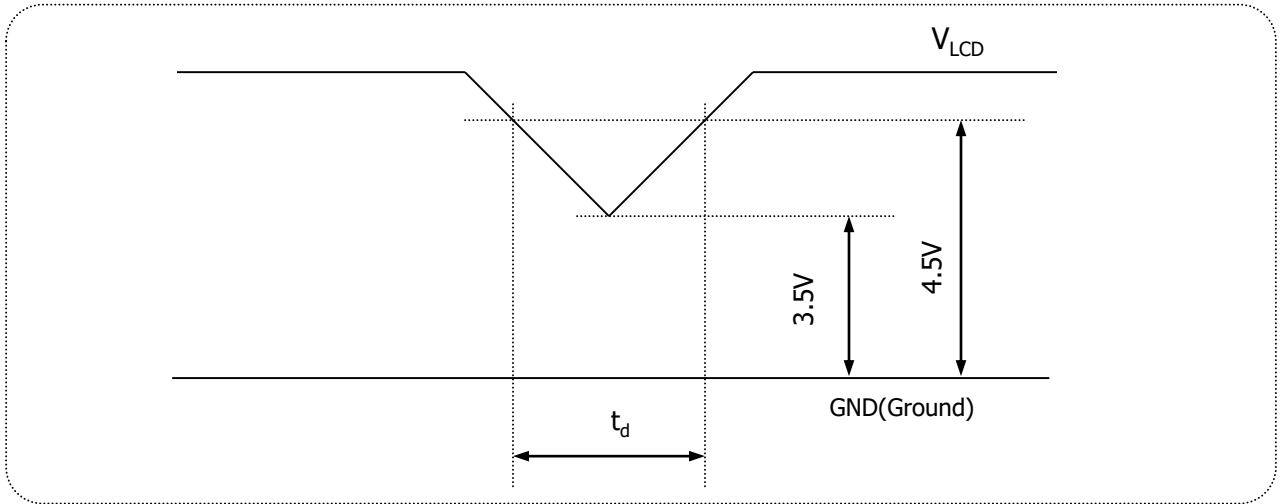


FIG.3-3 Power Dip Condition

For proper operation, stable power supply of V_{LCD} is necessary and power dip is allowed only in below condition. Except this condition, power on/off should follow power sequence specification exactly.

- 1) Dip Condition
 $3.5V \leq V_{LCD} < 4.5V$, $t_d \leq 20ms$

Product Specification

4. Optical Specifications

Optical characteristics are determined after the unit has been 'ON' for approximately 30 minutes in a dark environment at $25\pm 2^{\circ}\text{C}$. The values specified are at an approximate distance 50cm from the LCD surface at a viewing angle of Φ and θ equal to 0° and aperture 1 degree.

FIG.4-1 presents additional information concerning the measurement equipment and method.

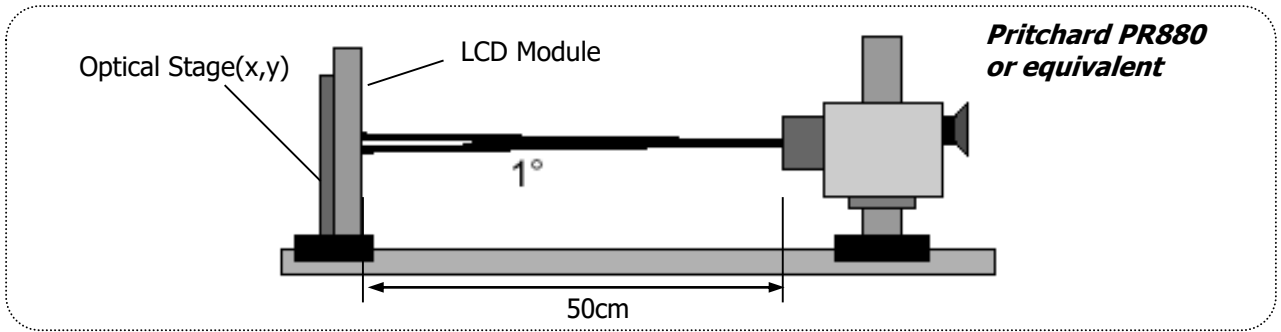


FIG.4-1 Optical Characteristic Measurement Equipment And Method

Table 4-1. Optical Characteristics

($T_a=25^{\circ}\text{C}$, $V_{\text{LCD}}=\text{Typ}$, $f_v=60\text{ Hz}$, $\text{DCLK}=\text{Typ}$, $I_s=\text{Typ}$)

Parameter		Symbol	Values			Units	Notes
			Min.	Typ.	Max.		
Contrast Ratio		CR	1050	1500	-		1
Surface Luminance, white		L _{WH}	280	350	-	cd/m²	2
Luminance Variation		δ _{WHITE}	75	-	-	%	3
Response Time	Gray to Gray	T _{GTG_AVR}	-	14	25	ms	4
Color Gamut (CIE 1931)		sRGB	95	100.0	-	%	
Color Coordinates [CIE 1931] <i>(By PR650)</i>	Red	Rx	Typ -0.03	0.674	Typ +0.03		
		Ry		0.314			
	Green	Gx		0.285			
		Gy		0.650			
	Blue	Bx		0.144			
		By		0.057			
	White	Wx	Typ	0.313	Typ +0.025		
		Wy	-0.025	0.329			
Color Temperature		-	-	6500	-	K	
Viewing Angle (CR>10, General)	Horizontal	θ _H	170	178	-	Degree	5
	Vertical	θ _V	170	178	-		
Gray Scale		-		2.2			6

Product Specification

Notes:

- 1) **Contrast Ratio(CR)** is defined mathematically as: **(By PR880)**
It is measured at center point(1)

$$\text{Contrast ratio} = \frac{\text{Surface luminance with all white pixels}}{\text{Surface luminance with all black pixels}}$$

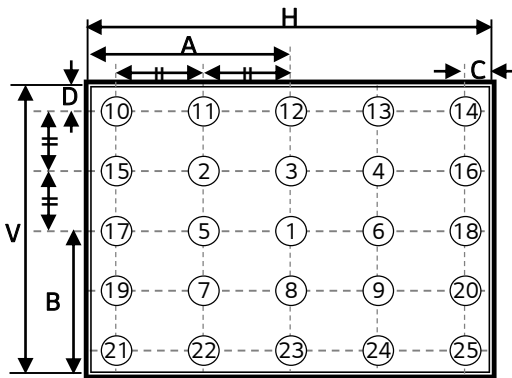
- 2) **Surface Luminance(L_{WH})** is the luminance value at center 1 point(1) across the LCD surface 50cm from the surface with all pixels displaying white. For more information see FIG.4-1. **(By PR880)**

- 3) The **Variation in Surface Luminance** , δ_{WHITE} is defined as: **(By PR880)**

$$\delta_{\text{WHITE}} = \frac{\text{Minimum}(LP1, LP2, \dots, LP25)}{\text{Maximum}(LP1, LP2, \dots, LP25)} \times 100(\%)$$

Where L1 to L25 are the luminance with all pixels displaying white at 25 locations.
For more information see FIG.4-2.

<Measuring Point For Luminance Variation>



@ H,V: Active Area

A: H/2

B: V/2

C: H/10

D: V/10

<Measuring Point For Surface Luminance>

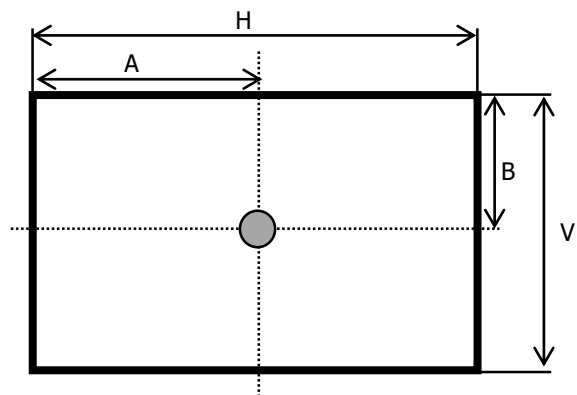


FIG.4-2 Measure Point for Luminance

Product Specification

Notes:

- 4) The **Gray To Gray Response Time** is defined as the following figure and shall be measured by switching the input signal for "Gray To Gray ". (*By RD80S*)
- Gray step: 5 Step
 - $T_{GTG\ AVR}$ is the total average time at rising time and falling time for "Gray To Gray ".
 - For the GTG measurement, the sampling rate of oscilloscope is 500k/s.

Table 4-2. GTG Gray

Gray to Gray		Rising Time				
		G255	G191	G127	G63	G0
Falling Time	G255					
	G191					
	G127					
	G63					
	G0					

Response Time is defined as the following figure and shall be measured by switching the input signal for "Gray(N)" and "Gray(M)".

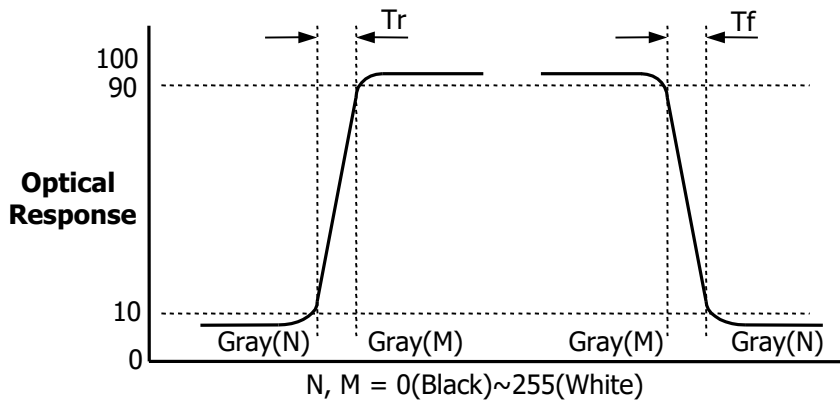


FIG.4-3 Response Time

Product Specification

Notes:

- 5) **Viewing Angle** is the angle at which the contrast ratio is greater than 10. The angles are determined for the horizontal or x axis and the vertical or y axis with respect to the z axis which is normal to the LCD surface. For more information see FIG.4-4. **(By PR880)**

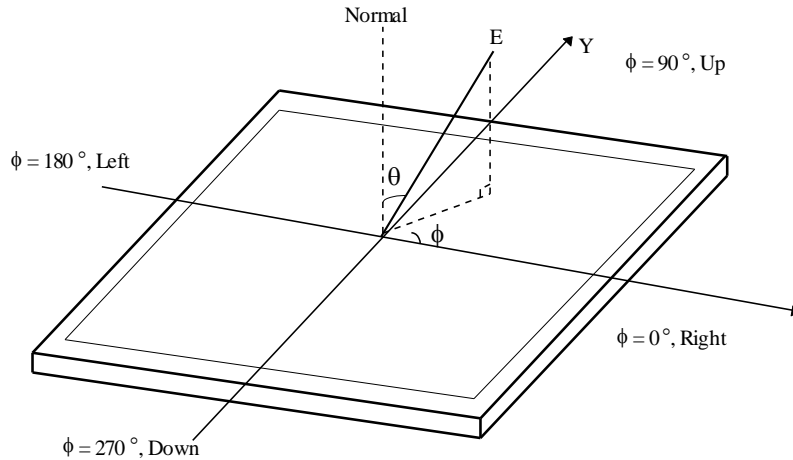


FIG.4-4 Viewing Angle

- 6) **Gamma Value** is approximately 2.2. For more information see below table.

Table 4-3. Gray Scale Specification

Gray Level	Relative Luminance [%](Typ)
0	0.10
15	0.30
31	1.08
47	2.50
63	4.72
79	7.70
95	11.49
111	16.20
127	21.66
143	28.20
159	35.45
175	43.8
191	53.00
207	63.30
223	74.48
239	86.80
255	100

Product Specification

5. Mechanical Characteristics

The contents provide general mechanical characteristics. In addition the figures in the next page are detailed mechanical drawing of the LCD.

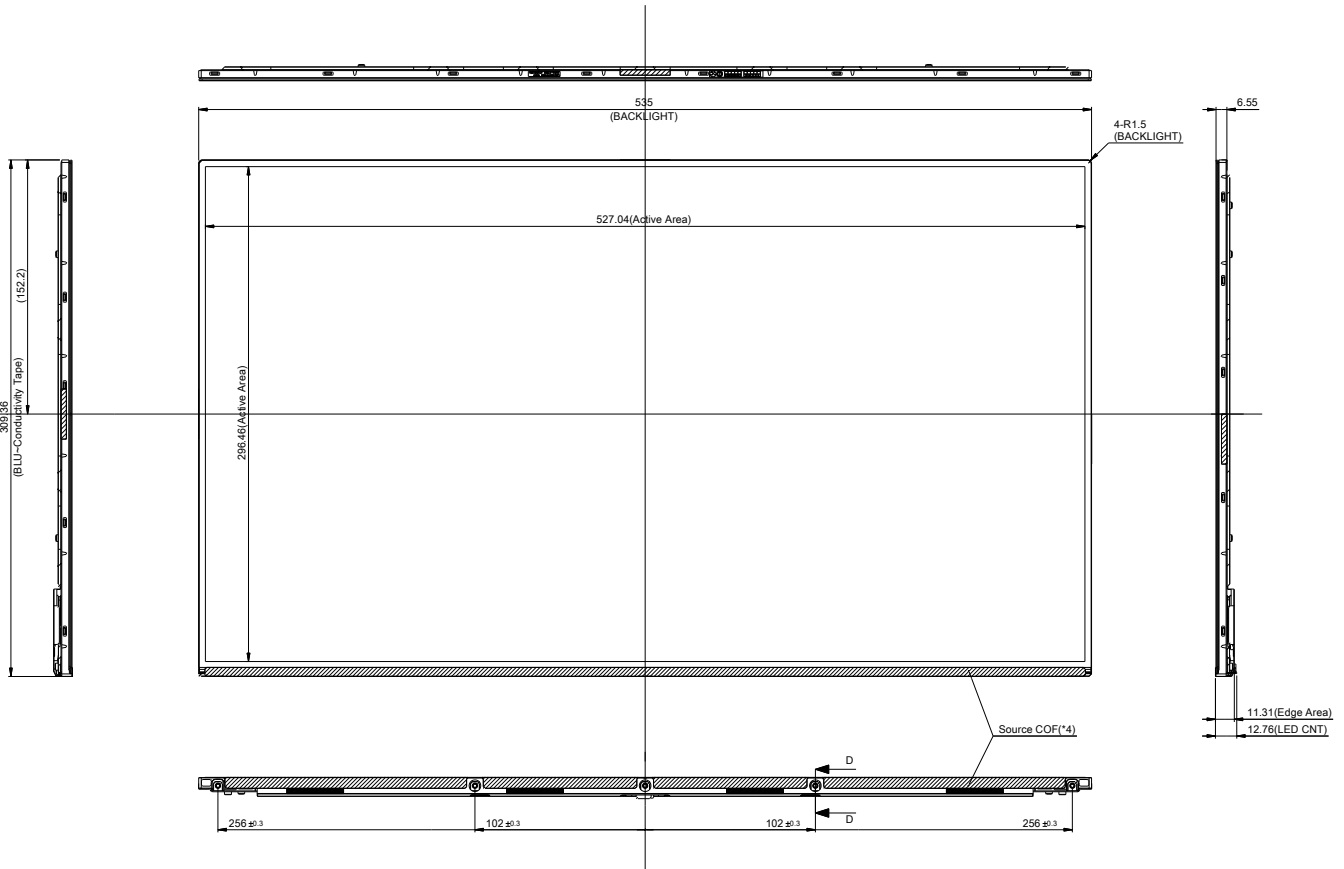
Outline Dimension	Horizontal	535.0 mm
	Vertical	309.36 mm
	Depth	11.31 mm
Bezel Area	Horizontal	-
	Vertical	-
Active Display Area	Horizontal	527.04 mm
	Vertical	296.46 mm
Weight	Typ: 1,870g, Max: 1,970g	
Surface Treatment	Anti-Glare treatment of the front polarizer(Haze25%, 3H)	

Note: Please refer to a mechanical drawing in terms of tolerance at the next page.

- Outline dimensions (horizontal, vertical and outside depth) are measured by using vernier calipers.
- The inside depth dimensions are measured by using height gauge, when LCM is put face down onto a flat surface.

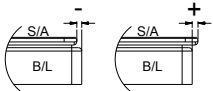
Product Specification

<Front View>



Notes

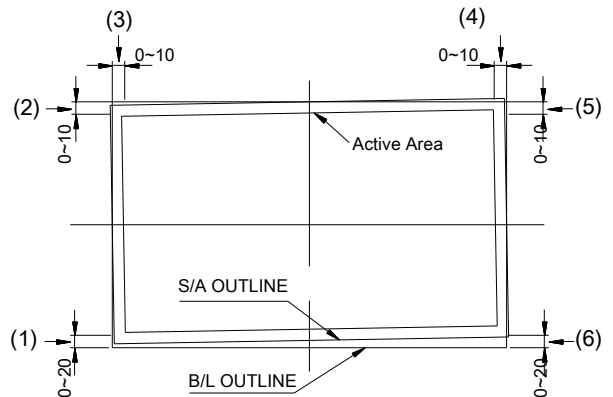
1. I/F connector specification : IS100-L300-C23(Manufactured by UJU)
2. LED connector specification : 10035WS-H06D(HF) manufactured by Yeonho or equivalent
3. Torque of user hole: 3.0~6.0kgf-cm.
- 4-1. Tilt Value definition



4-2. Tilt Specifications

Position	Typ.	Tolerance	Range
(1),(2)_Left	-0.1	± 0.3	-0.4 ~ +0.2
(3),(4)_Up	-0.1	± 0.3	-0.4 ~ +0.2
(5),(6)_Right	-0.1	± 0.3	-0.4 ~ +0.2

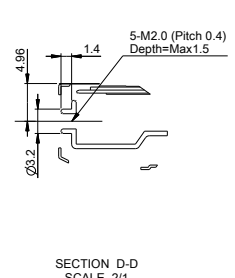
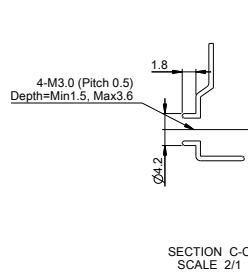
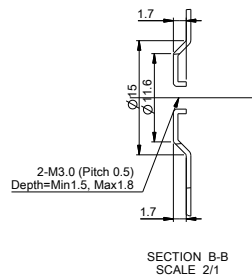
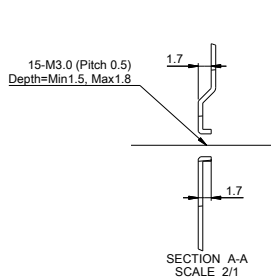
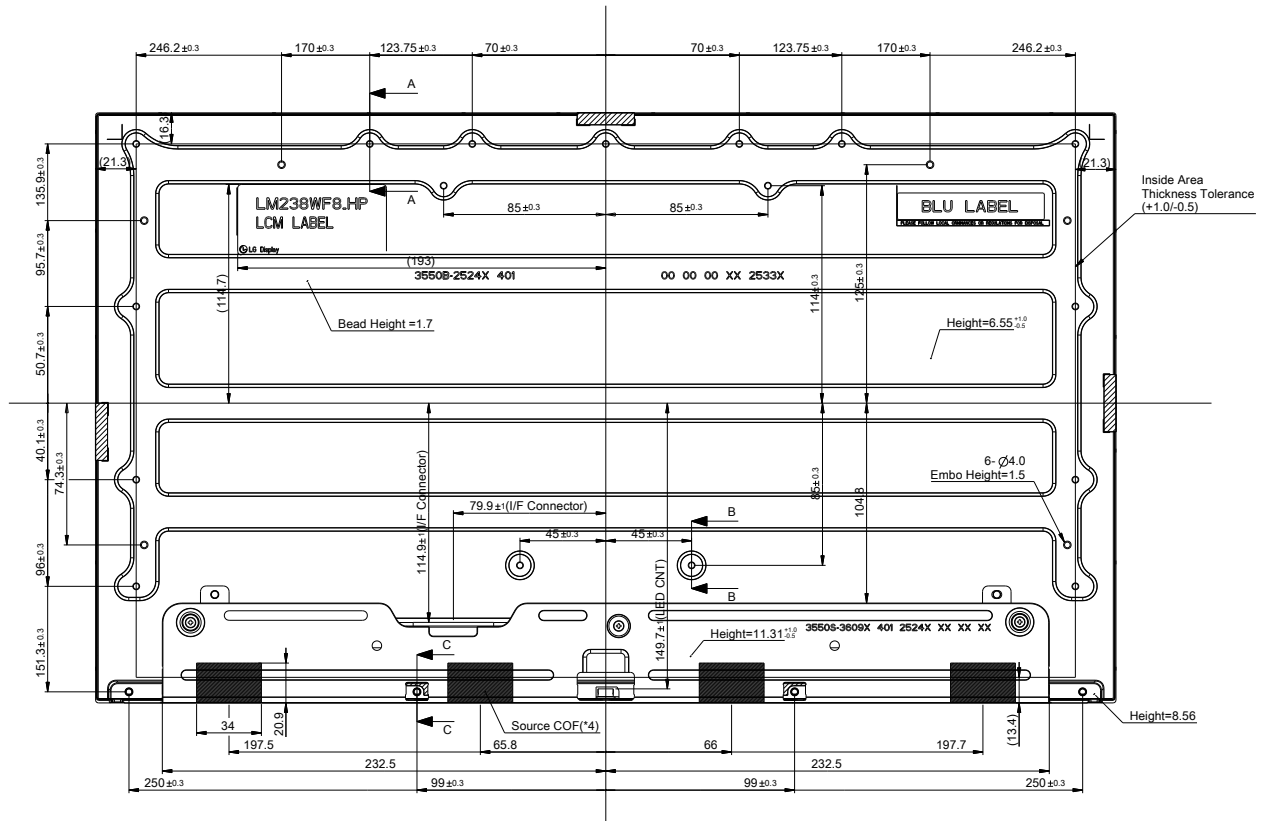
5. Unspecified tolerances to be ± 0.5
6. The LCM warp(warpage) is less than 1.0 on the surface plate
7. The COF area(hatching area) is weak & sensitive, so please don't press the COF area
8. Undefined height should follow the 3D modeling data.



< Measurement Point: (1)~(6) >

Product Specification

<Rear View>



LGD Highly recommendation :

System chassis or frame should be designed to keep the IPS Panel flat as it is vulnerable to panel light-leakage caused by deformation.

Product Specification

6. Reliability

Environment test condition

No	Test Item	Condition	Notes
1	High temperature storage test	$T_a = 60^{\circ}\text{C}$, 240h	1
2	Low temperature storage test	$T_a = -20^{\circ}\text{C}$, 240h	1
3	High temperature operation test	$T_a = 50^{\circ}\text{C}$, 50%RH, 240h	1
4	Low temperature operation test	$T_a = 0^{\circ}\text{C}$, 240h	1
5	Humidity condition operation	$T_a = 40^{\circ}\text{C}$, 90%RH	1
6	Altitude Operating Storage / Shipment	0 - 10,000 feet (3,048m) 0 - 40,000 feet (12,192m)	
7	Maximum storage humidity for 4 corner light leakage Mura	Max 70%RH, $T_a = 40^{\circ}\text{C}$	

Note 1) Result Evaluation Criteria:

TFT-LCD panels test should take place after cooling enough at room temperature.

In the standard condition, there should be no particular problems that may affect the display function.

* T_a = Ambient Temperature

* Guarantee 30Khrs on static office circumstances (Room Temp. & Room Humidity) only for the Panel peel off at tilt ($-35^{\circ} \sim +80^{\circ}$) and pivot ($-180^{\circ} \sim +180^{\circ}$) usage.

7. International Standards

7-1. Safety

- a) IEC 62368-1, The International Electro-technical Commission(IEC).
Audio/video, Information and Communication Technology Equipment - Safety - Safety Requirements.
- b) EN 62368-1, European Committee for Electro-technical Standardization (CENELEC)
Audio/video, Information and Communication Technology Equipment - Safety Requirements
- c) UL 62368-1, UL LLC.
Audio/video, Information and Communication Technology Equipment - Safety Requirements
- d) CAN/CSA C22.2 No.62368-1, Canadian Standards Association (CSA).
Audio/video, Information and Communication Technology Equipment - Safety Requirements
- e) IEC 60950-1, The International Electro technical Commission (IEC).
Information Technology Equipment - Safety - Part 1 : General Requirements

7-2. Environment

- a) RoHS, Directive 2011/65/EU of the European Parliament and of the council of 8 June 2011

8. Packing

8-1. Designation of Lot Mark

a) Lot mark

A	B	C	D	E	F	G	H	I	J	K	L	M
---	---	---	---	---	---	---	---	---	---	---	---	---

A,B,C : SIZE(INCH)
E : MONTH

D : YEAR
F ~ M : SERIAL NO.

Note

1. YEAR

Year	2020	2021	2022	2023	2024	2025	2026	2027	2028	2029
Mark	K	L	M	N	P	R	S	T	U	V

2. MONTH

Month	Jan	Feb	Mar	Apr	May	Jun	Jul	Aug	Sep	Oct	Nov	Dec
Mark	1	2	3	4	5	6	7	8	9	A	B	C

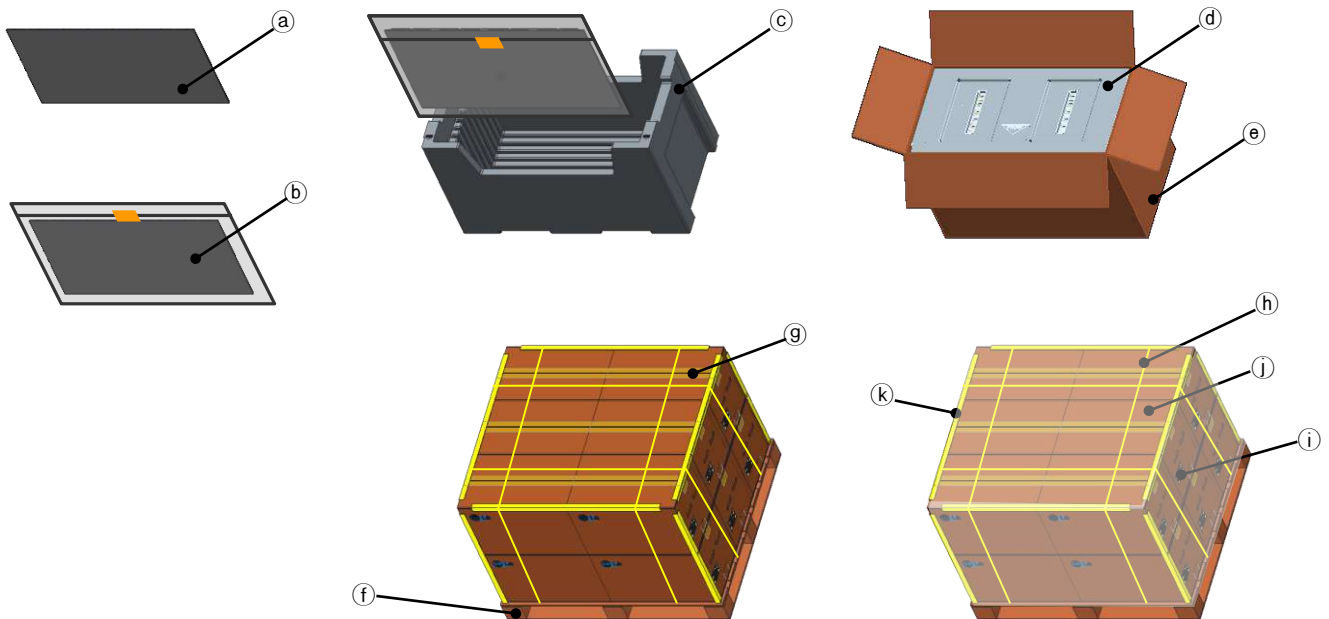
b) Location of lot mark

Serial No. is printed on the label. The label is attached to the backside of the LCD module.
This is subject to change without prior notice.

Product Specification

8-2. Packing Form

- a) Package Quantity In One Box: 10 ea
 Package Quantity In One Pallet: 120 ea
- b) Packing Size: 635 mm x 370 mm x 430 mm
- c) Pallet ASS'Y Size: 1140 mm x 1300 mm x 972 mm
- * LCM Direction(Insert to Bottom Packing): COF Down



No.	Description	Material
(a)	LCM	-
(b)	AL-Bag	AL
(c)	Packing, Bottom	EPS
(d)	Packing, Top	EPS
(e)	Box	Paper(SW)
(f)	Pallet	Plywood
(g)	Tape	OPP
(h)	BAND	PP
(i)	LABEL	YUPO PAPER
(j)	Wrap	LDPE
(k)	Paper angle	Paper

Product Specification

9. Precautions

Please pay attention to the followings when you use this TFT LCD module.

9-1. Mounting Precautions

- 1) You must mount a module using holes arranged in rear side.
- 2) You should consider the mounting structure so that uneven force(ex. Twisted stress) is not applied to the module. And the case on which a module is mounted should have sufficient strength so that external force is not transmitted directly to the module.
- 3) Please attach the surface transparent protective plate to the surface in order to protect the polarizer. Transparent protective plate should have sufficient strength in order to the resist external force.
- 4) You should adopt radiation structure to satisfy the temperature specification.
- 5) Acetic acid type and chlorine type materials for the cover case are not desirable because the former generates corrosive gas of attacking the polarizer at high temperature and the latter causes circuit break by electro-chemical reaction.
- 6) Do not touch, push or rub the exposed polarizers with glass, tweezers or anything harder than HB pencil lead. And please do not rub with dust clothes with chemical treatment. Do not touch the surface of polarizer for bare hand or greasy cloth.
(Some cosmetics are detrimental to the polarizer.)
- 7) When the surface becomes dusty, please wipe gently with absorbent cotton or other soft materials like chamois soaks with petroleum benzene. Normal-hexane is recommended for cleaning the adhesives used to attach front / rear polarizers. Do not use acetone, toluene and alcohol because they cause chemical damage to the polarizer.
- 8) Wipe off saliva or water drops as soon as possible. Their long time contact with polarizer causes deformations and color fading.
- 9) Do not open the case because inside circuits do not have sufficient strength.
- 10) System frame should not have an interference with panel which can cause LC Leakage/Panel Crack due to the contraction of system frame at low temperature condition or panel damage by any other circumstances.

9-2. Operating Precautions

- 1) Response time depends on the temperature.(In lower temperature, it becomes longer.)
- 2) Brightness depends on the temperature.(In higher temperature, it becomes lower.) And in lower temperature, response time(required time that brightness is stable after turned on) becomes longer.
- 3) Be careful for condensation at sudden temperature change. Condensation makes damage to polarizer or electrical contacted parts. And after fading condensation, smear or spot will occur.
- 4) When fixed patterns are displayed for a long time, remnant image is likely to occur.
- 5) Module has high frequency circuits. Sufficient suppression to the electromagnetic interference shall be done by system manufacturers. Grounding and shielding methods may be important to minimized the interference.
- 6) Please do not give any mechanical and/or acoustical impact to LCM. Otherwise, LCM can't be operated its full characteristics perfectly.
- 7) A screw which is fastened up the steels should be a machine screw.(if not, it causes metallic foreign material and deal LCM a fatal blow)
- 8) Please do not set LCD on its edge.
- 9) When LCMs are used for public display, defects such as Yogore & image sticking can not be guaranteed.
- 10) LCMs cannot support "Interlaced Scan Method"
- 11) When this reverse model is used as a forward-type model (PCB on top side) or a Portrait-type mode at storage and operation, LGD can not guarantee any defects of LCM.
- 12) Please conduct image sticking test after 2-hour aging with Rolling Pattern at normal temperature.(25~40°C)

Product Specification

9-3. Electrostatic Discharge Control

Since a module is composed of electronic circuits, it is not strong to electrostatic discharge. Make certain that treatment persons are connected to ground through wrist band etc. And don't touch interface pin directly.

9-4. Precautions For Strong Light and Hazardous Materials Exposure

Strong light exposure causes degradation of polarizer and color filter.
The LCM should be avoided direct contact with hazardous materials such as sulfur, acetic acid, chlorine, etc. These materials may cause chemical reaction such as sulfurization, corrosion, discoloration, etc.

9-5. Storage

When storing modules as spares for a long time, the following precautions are necessary.

- 1) Store them in a dark place. Do not expose the module to sunlight or fluorescent light. Keep the temperature between 5°C and 35°C at normal humidity.
- 2) The polarizer surface should not come in contact with any other object.
It is recommended that they be stored in the container in which they were shipped.

9-6. Handling Precautions For Protection Film

- 1) The protection film is attached to the bezel with a small masking tape. When the protection film is peeled off, static electricity is generated between the film and polarizer. This should be peeled off slowly and carefully by people who are electrically grounded and with well ion-blown equipment or in such a condition, etc.
- 2) When the module with protection film attached is stored for a long time, sometimes there remains a very small amount of glue still on the bezel after the protection film is peeled off.
- 3) You can remove the glue easily. When the glue remains on the bezel surface or its vestige is recognized, please wipe them off with absorbent cotton waste or other soft material like chamois soaked with normal-hexane.

Product Specification

APPENDIX

■ ID Label of LCM

■ Serial Label



■ Box Label

LM238WF8		SSC1	
PN : N84929-001			
10	PCS	LOT/MM-DD	
MADE IN CHINA		RoHS Verified	
			

■ Pallet Label

LM238WF8		SSC1	
PN : N84929-001			
120	PCS	LOT/MM-DD	
MADE IN CHINA		RoHS Verified	
