



**PROPRIETARY NOTE**

THIS SPECIFICATION IS THE PROPERTY OF BOE AND SHALL NOT BE REPRODUCED OR COPIED WITHOUT THE WRITTEN PERMISSION OF BOE AND MUST BE RETURNED TO BOE UPON ITS REQUEST

**DV150X0M-N17**

**Product Specification**

**Rev. 0**

**Fuzhou BOE Optoelectronics technology CO., LTD**

SPEC. NUMBER Spec-00000100	PRODUCT GROUP TFT-LCD	Rev. 0	ISSUE DATE 2025/03/14	PAGE 1 OF 36
-------------------------------	--------------------------	--------	--------------------------	-----------------

BOE	PRODUCT GROUP	REV	ISSUE DATE
	TFT-LCD	Rev. 0	2025/03/14

REVISION HISTORY

(    )preliminary specification

( √ )Final specification

Revision No.	Page	Description of changes	Date	Prepared
P0		Initial Release	2024/06/07	Chenda
0		-	2025/03/14	Chenda

SPEC. NUMBER Spec-00000100	SPEC. TITLE DV150X0M-N17 Product Specification Rev.0	PAGE 2 OF 36
-------------------------------	---	-----------------

BOE	PRODUCT GROUP	REV	ISSUE DATE
	TFT-LCD	Rev. 0	2025/03/14

Contents		
No	ITEM	Page
	REVISIONS HISTORY	2
	CONTENTS	3
1	GENERAL DESCRIPTION	4
	1.1 Introduction	
	1.2 Features	
	1.3 Applications	
	1.4 General Specification	
2	ABSOLUTE MAXIMUM RATINGS	6
3	ELECTRICAL SPECIFICATIONS	7
	3.1 TFT LCD	
4	INTERFACE CONNECTION	10
	4.1 Input Signal & Power	
	4.2 LVDS Interface	
	4.3 LVDS Rx Interface Timing Parameter	
	4.4 LVDS Rx Interface Eye Diagram	
	4.5 LVDS Receiver Differential Input	
5	SIGNAL TIMING SPECIFICATIONS	16
	5.1 Timing Parameters (DE only mode)	
	5.2 Signal Timing Waveform	
	5.3 Input Signals, Basic Display Colors and Gray Scale of Colors	
	5.4 Power Sequence	
6	OPTICAL SPECIFICATIONS	20
7	MECHANICAL CHARACTERISTICS	22
8	RELIABILITY TEST	23
9	PRODCUT SERIAL NUMBER	24
10	PACKING INFORMATION	25
11	PRECAUTIONS	27
12	APPENDIX	28

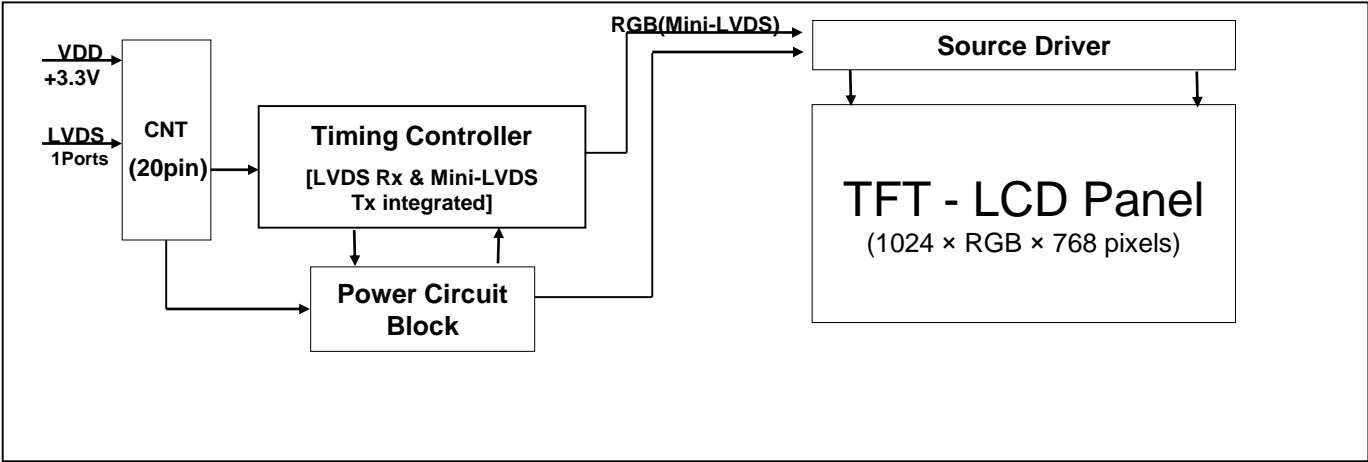
SPEC. NUMBER	SPEC. TITLE	PAGE
Spec-00000100	DV150X0M-N17 Product Specification Rev.0	3 OF 36

<div>BOE</div>	PRODUCT GROUP	REV	ISSUE DATE
	TFT-LCD	Rev. 0	2025/03/14

# 1.0 GENERAL DESCRIPTION

## 1.1 Introduction

DV150X0M-N17 is a color active matrix TFT LCD MDL using amorphous silicon TFT's (Thin Film Transistors) as an active switching devices. This MDL has a 15 inch diagonally measured active area with XGA resolutions. Each pixel is divided into RED, GREEN, BLUE dots which are arranged in vertical stripe and this module can display 16.7M colors. The TFT-LCD MDL panel is adapted for a low reflection and higher color type.



## 1.2 Features

- LVDS interface with 1 pixel / clock
- High-speed response
- Low color shift image quality
- 6-bit +FRC color depth, display 16.7M colors
- Wide viewing angle
- DE (Data Enable) only mode
- HADS technology is applied for high display quality
- RoHS compliant
- Support 7\*24hrs ,long-term static display usage would cause image sticking
- Landscape and Portrait usage support
- LC Tni 104.9°C

SPEC. NUMBER	SPEC. TITLE	PAGE
Spec-00000100	DV150X0M-N17 Product Specification Rev.0	4 OF 36

	PRODUCT GROUP	REV	ISSUE DATE
	TFT-LCD	Rev. 0	2025/03/14

1.3 Application

- Outdoor Commercial Digital Display

1.4 General Specification

< Table 1. General Specifications >

Parameter	Specification	Unit	Remarks
Active area	304.128(H) × 228.096 (V)	mm	
Number of pixels	1024(H) × 768(V)	pixels	
Pixel pitch	297(H) × 297(V)	um	
Pixel arrangement	Pixels RGB Vertical stripe		
Display colors	16.7M	colors	
Display mode	Normally Black		
Dimensional outline	326.5(H)*253.5(V)*7.85(B)	mm	Detail refer to drawing
Weight	800±50	g	
Power Consumption	26.4	Watt	Typ.
Bezel width (L/R/U/D)	10/10/11.7/11.7	mm	
Surface Treatment	AG25(CF POL)		
Back-light	Up&Down edge side, 2- LED Light bar		

SPEC. NUMBER Spec-00000100	SPEC. TITLE DV150X0M-N17 Product Specification Rev.0	PAGE 5 OF 36
-------------------------------	---	-----------------

BOE	PRODUCT GROUP	REV	ISSUE DATE
	TFT-LCD	Rev. 0	2025/03/14

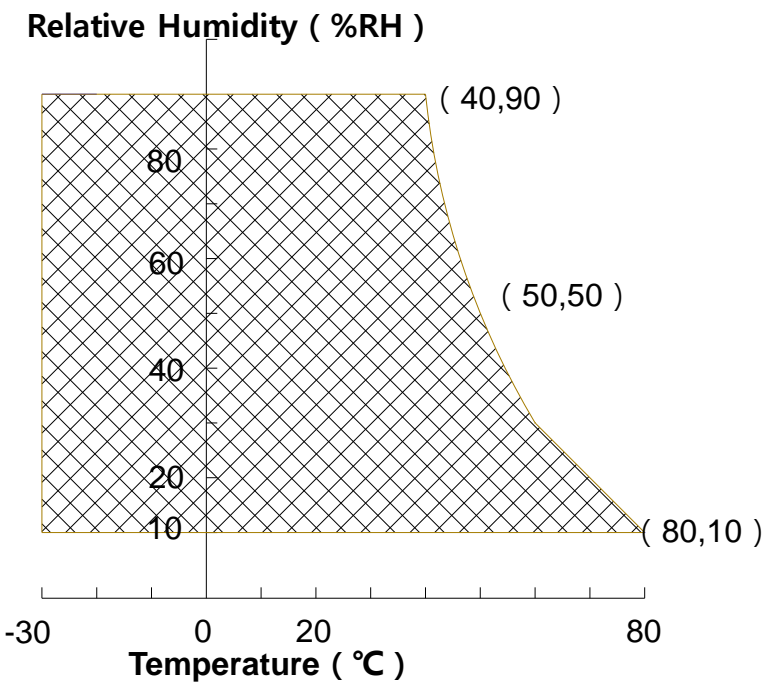
## 2.0 ABSOLUTE MAXIMUM RATINGS

The followings are maximum values which, if exceed, may cause faulty operation or damage to the unit. The operational and non-operational maximum voltage and current values are listed in Table 2.

< Table 2. Module Electrical Specifications > [VSS=GND=0V]

Parameter	Symbol	Min.	Max.	Unit	Remark
Power Supply Voltage	VDD	VSS-0.3	3.6	V	Ta = 25 °C
	VLBU	VSS-0.3	13.2	V	Ta = 25 °C
Operating Temperature	T <sub>OP</sub>	-30	+80	°C	Note 1
Storage Temperature	T <sub>ST</sub>	-30	+80	°C	
Operating Ambient Humidity	Hop	10	90	%RH	
Storage Humidity	Hst	10	90	%RH	

Note 1 : Temperature and relative humidity range are shown in the figure below.



BOE	PRODUCT GROUP	REV	ISSUE DATE
	TFT-LCD	Rev. 0	2025/03/14

### 3.0 ELECTRICAL SPECIFICATIONS

#### 3.1 TFT LCD Module

< Table 3. Module Electrical Specifications >

[Ta =25±2 °C]

Parameter		Symbol	Values			Unit	Remark
			Min	Typ	Max		
Power Supply Input Voltage		VDD	3.0	3.3	3.6	V	Note 1
Power Supply Current		IDD	-	734	960	mA	
Power Supply Ripple Voltage		VRP	-	-	300	mV	
Rush Current		IRUSH	-	-	2	A	Note 2
LVDS Interface	Differential Input High Threshold Voltage	VLVTH	-	-	+100	mV	VLVC=1.2V
	Differential Input Low Threshold Voltage	VLVTL	-100	-	-	mV	
	Common Input Voltage	VLVC	-	1.2V	VCC_LVDS-0.4- VID /2	V	
CMOS Interface	Input High Threshold Voltage	VIH	0.6VDD	-	VDD	V	
	Input Low Threshold Voltage	VIL	0	-	0.3VDD	V	
Power Consumption		PD		2.4	3.16	W	
		PBL		24	26		Note 3
		Ptotal		26.4	29.16		

Note 1 : The supply voltage is measured and specified at the interface connector of LCM.

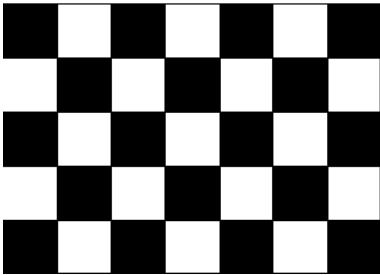
The current draw and power consumption specified is for VDD=3.3V,

Frame rate f<sub>v</sub>=60Hz and Clock frequency = 65MHz.

Test Pattern of power supply current

a) Typ : Mosaic 7X5 (L0/L255)

b) Max : Vline Subline (L255) )



Note 2 : The duration of rush current is about 2ms and rising time of Power Input is 1ms(min)

SPEC. NUMBER	SPEC. TITLE	PAGE
Spec-00000100	DV150X0M-N17 Product Specification Rev.0	7 OF 36

### 3.0 ELECTRICAL SPECIFICATIONS

#### 3.2 Backlight Unit

< Table 3. Backlight Unit Electrical Specifications > [Ta =25±2 °C]

Parameter			Min.	Typ.	Max.	Unit	Remarks
LED Driver Power Supply Voltage		VLED	10.8	12	12.6	V	
LED Driver Power Supply Current		ILED	-	2000	2160	mA	
EN Control Level	Backlight on	V <sub>ENH</sub>	3	-	5	V	EN logic high v oltage
	Backlight off	V <sub>ENL</sub>	0	0	0.8	V	EN logic low vol tage
PWM Control Level	PWM High Level	V <sub>PML</sub>	3	3.3	5	V	
	PWM Low Level	V <sub>PML</sub>	0	0	0.8	V	
PWM Control Frequency		F <sub>PWM</sub>	0.2	-	2	KHz	Refer to customer comments
Duty Ratio		-	5	-	100	%	
LED Life-Time		N/A	50,000	-	-	Hour	Note1
BLU Power Consumption		PBL	-	24	26	W	Note2

Note1: The life time of LED, 50,000Hrs, is determined as the time at which luminance of the LED is 50% compared to that of initial value at the typical LED current on condition of continuous operating at 25 ± 2 °C.

Note2: PBL=VLED × ILED



BOE	PRODUCT GROUP	REV	ISSUE DATE
	TFT-LCD	Rev. 0	2025/03/14

3.3 Backlight Input Pin Assignments

Connector type : 12507WR-H10L

Pin No.	Symbol	Feature
1	VIN(12V)	Power Supply (10.8V~13.2V)
2	VIN(12V)	Power Supply (10.8V~13.2V)
3	VIN(12V)	Power Supply (10.8V~13.2V)
4	NC	NO connect
5	GND	Ground
6	GND	Ground
7	GND	Ground
8	VBLON	LED-EN VIH>2V,VIL<0.8V, high active
9	VPWM	PWM, 200Hz~2kHz, 5%~100%, VIH>2V,VIL<0.8V
10	NC	Not connect

SPEC. NUMBER Spec-00000100	SPEC. TITLE DV150X0M-N17 Product Specification Rev.0	PAGE 9 OF 36
-------------------------------	---	-----------------

4.0 INTERFACE CONNECTION

4.1 Interface Input Signal & Power : Cable length suggest less than 700 mm

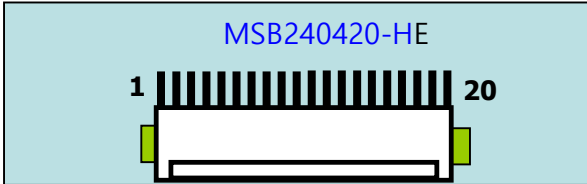
- LVDS Connector : MSB240420-HE

- < Table 4. Module Input Connector Pin Configuration >

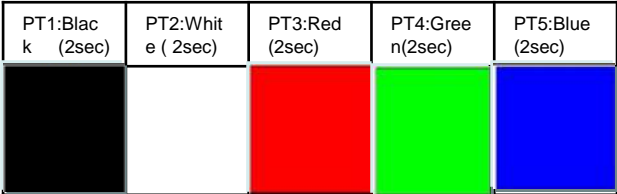
Pin No	Symbol	Description	Pin No	Symbol	Description
1	VDD	Power Supply , 3.3V(typ.)	11	RIN2-	-LVDS differential data input 2
2	VDD	Power Supply,3.3V(typ.)	12	RIN2+	+LVDS differential data input 2
3	VSS	Ground	13	VSS	Ground
4	NC	No Connection	14	CLKIN-	-LVDS differential clock input CL K
5	RIN0-	-LVDS differential data input 0	15	CLKIN+	+LVDS differential clock input CL K
6	RIN0+	+LVDS differential data input 0	16	VSS	Ground
7	VSS	Ground	17	RIN3-	-LVDS differential data input 3
8	RIN1-	-LVDS differential data input 1	18	RIN3+	+LVDS differential data input 3
9	RIN1+	+LVDS differential data input 1	19	VSS	Ground
10	VSS	Ground	20	NC	No Connection

Notes : 1. Input Level of LVDS signal is based on the EIA-644 Standard.

Rear view of LCM



BIST Pattern

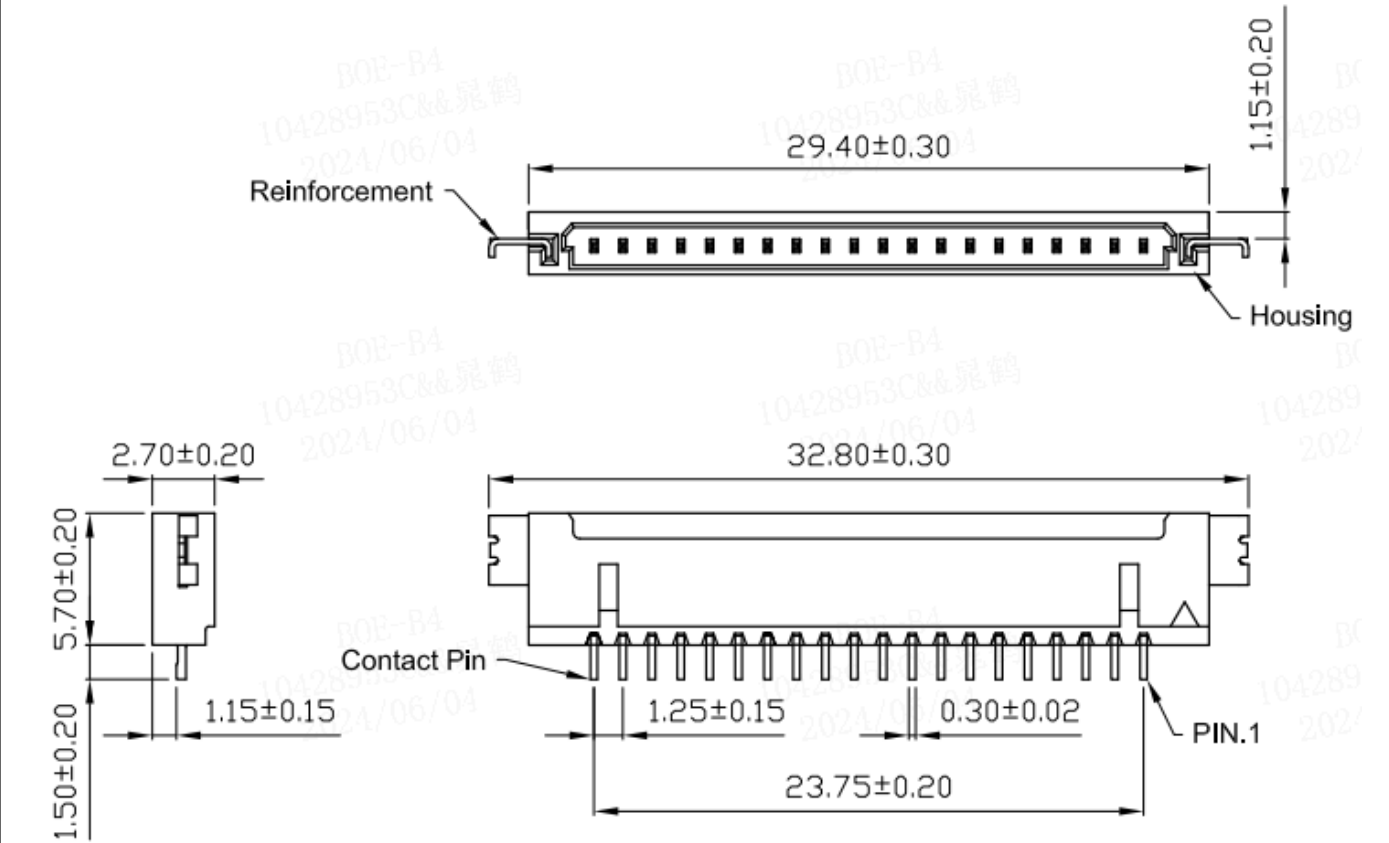


BOE	PRODUCT GROUP	REV	ISSUE DATE
	TFT-LCD	Rev. 0	2025/03/14

4.0 Dimension

4-2 CNT Dimension

-20pin Connector: MSB240420 - HE



SPEC. NUMBER Spec-00000100	SPEC. TITLE DV150X0M-N17 Product Specification Rev.0	PAGE 11 OF 36
-------------------------------	---	------------------

BOE	PRODUCT GROUP	REV	ISSUE DATE
	TFT-LCD	Rev. 0	2025/03/14

### 4.2 LVDS Interface

- LVDS Receiver : Timing Controller (LVDS Rx merged) / LVDS Data : Pixel Data  
 < Table 5. LVDS Input Data Mapping >

Channel No.	Data No.	8-bit LVDS Type
		NS
0	Bit-0	R0
	Bit-1	R1
	Bit-2	R2
	Bit-3	R3
	Bit-4	R4
	Bit-5	R5
	Bit-6	G0
1	Bit-0	G1
	Bit-1	G2
	Bit-2	G3
	Bit-3	G4
	Bit-4	G5
	Bit-5	B0
	Bit-6	B1
2	Bit-0	B2
	Bit-1	B3
	Bit-2	B4
	Bit-3	B5
	Bit-4	HS
	Bit-5	VS
	Bit-6	DE
3	Bit-0	R6
	Bit-1	R7
	Bit-2	G6
	Bit-3	G7
	Bit-4	B6
	Bit-5	B7
	Bit-6	-

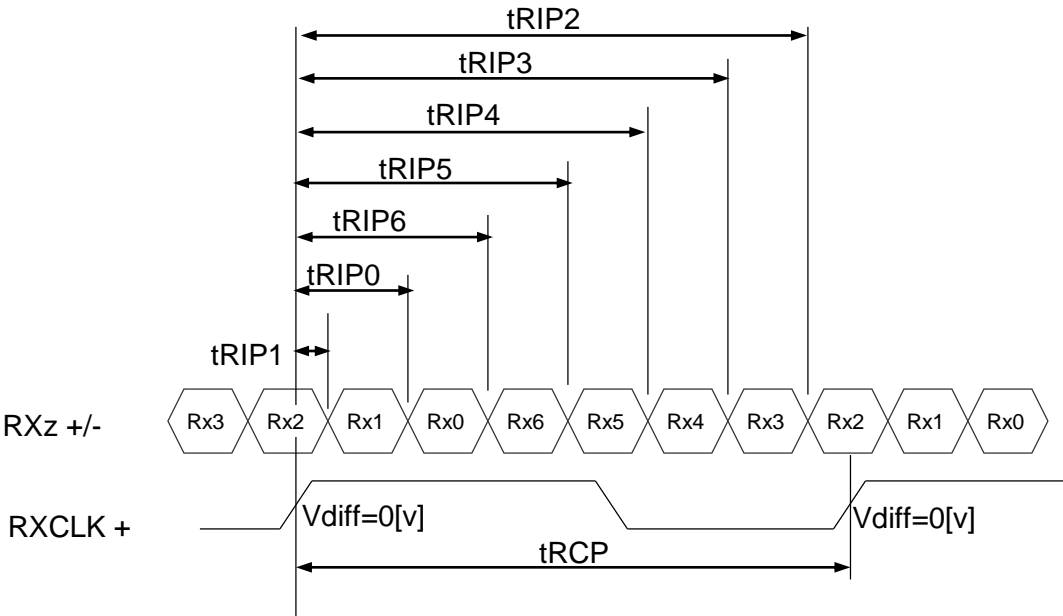
SPEC. NUMBER Spec-00000100	SPEC. TITLE DV150X0M-N17 Product Specification Rev.0	PAGE 12 OF 36
-------------------------------	---	------------------

### 4.3 LVDS Rx Interface Timing Parameter

The specification of the LVDS Rx interface timing parameter is shown in Table 6.

<Table 6. LVDS Rx Interface Timing Specification>

Item	Symbol	Min	Typ	Max	Unit	Remark
CLKIN Period	tRCP	9.5	T	25	nsec	
Input Data 0	tRIP1	-   tRMG	0.0	tRMG	Clock	
Input Data 1	tRIP0	T/7-   tRMG	T/7	T/7+   tRMG	Clock	
Input Data 2	tRIP6	2 T/7-   tRMG	2T/7	2T/7+   tRMG	Clock	
Input Data 3	tRIP5	3T/7-   tRMG	3T/7	3T/7+   tRMG	Clock	
Input Data 4	tRIP4	4T/7-   tRMG	4T/7	4T/7+   tRMG	Clock	
Input Data 5	tRIP3	5T/7-   tRMG	5T/7	5T/7+   tRMG	Clock	
Input Data 6	tRIP2	6T/7-   tRMG	6T/7	6T/7+   tRMG	Clock	

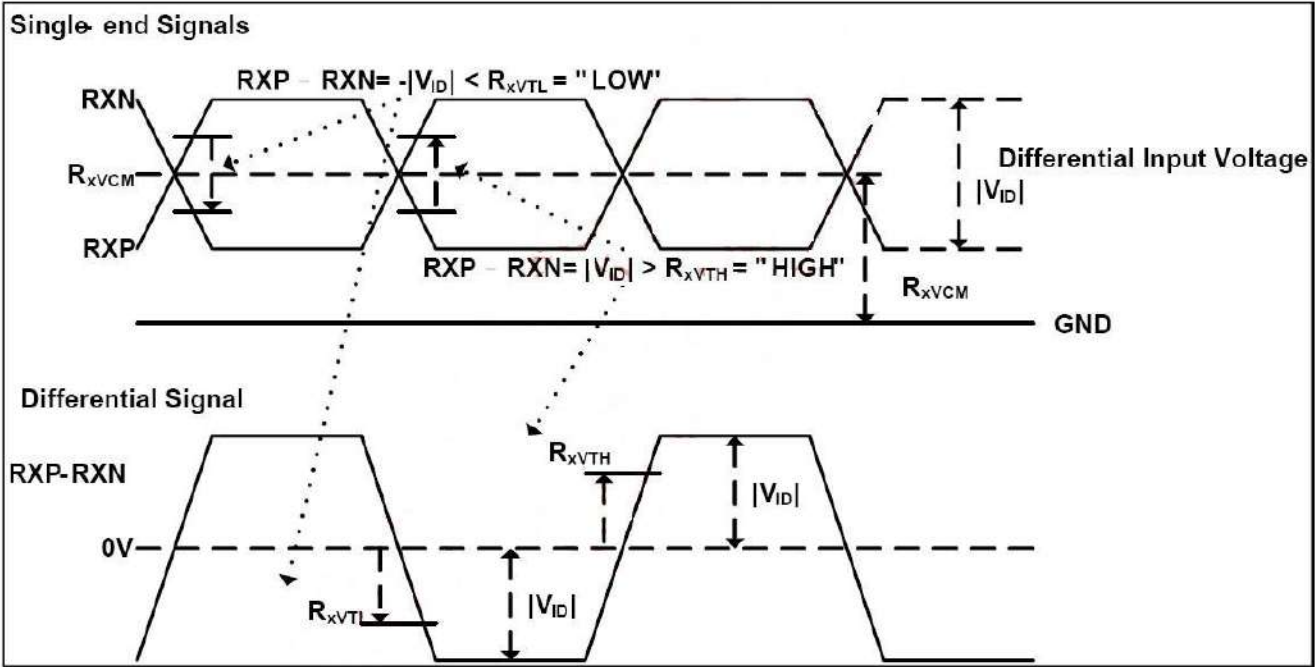


\* Vdiff = (RXz+)-(RXz-),... ,(RXCLK+)-(RXCLK-)

### 4.4 LVDS Receiver Differential Input ( DC Characteristics )

< Table 7-1. LVDS Rx DC Characteristics >

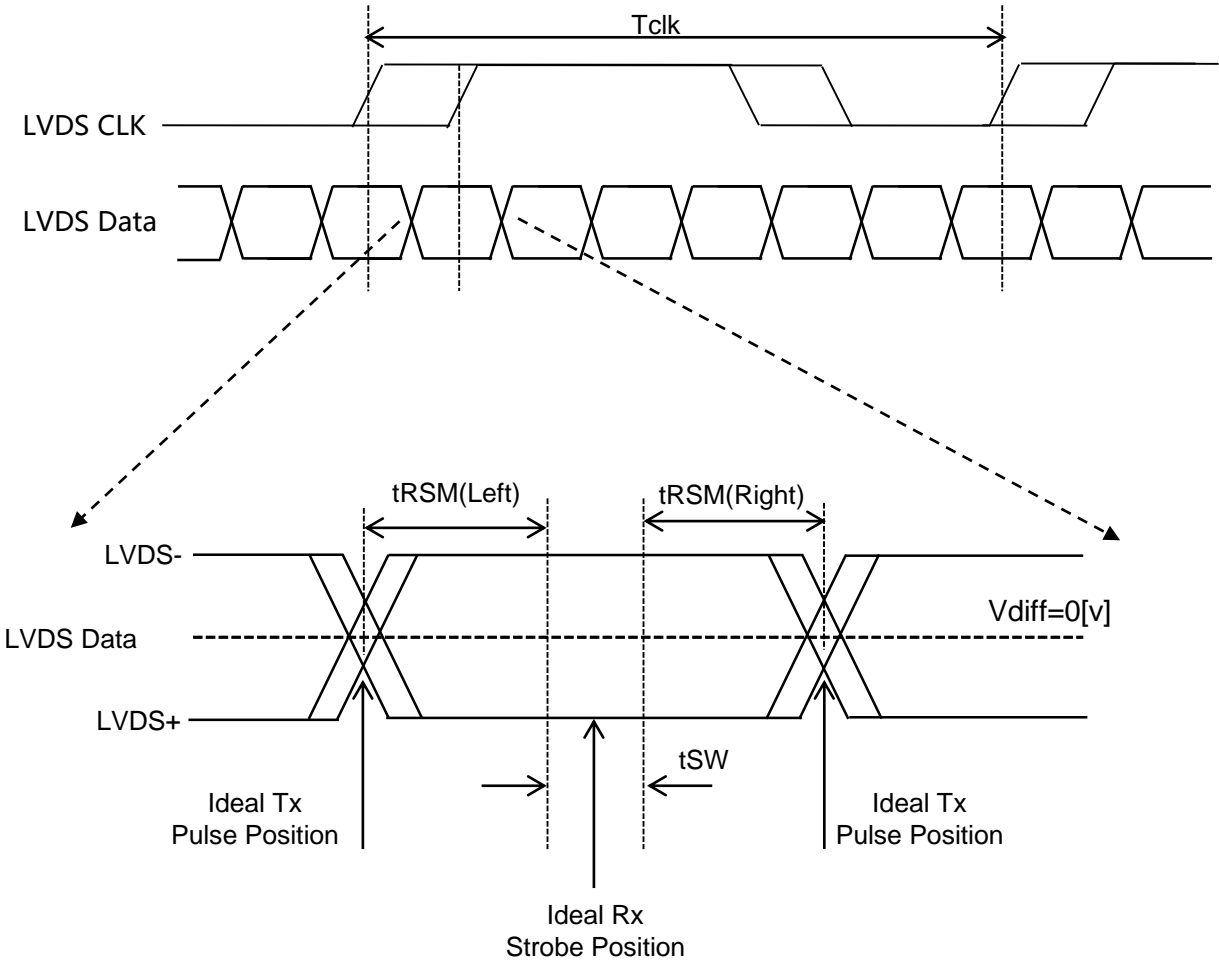
Parameter	Symbol	Min	Typ	Max	Unit	Notes
Differential Input High Threshold Voltage	VTH	-	-	+100	mV	VCM=1.2V
Differential Input Low Threshold Voltage	VTL	-100	-	-	mV	
Differential Input Common Mode Voltage	VCM	-	1.2V	VCC_LVDS-0.4- VID /2	V	
Differential Input Voltage	VID	100	-	600	mV	



4.5 LVDS Receiver Differential Input ( AC Characteristics )

< Table 7-1. LVDS Rx AC Characteristics >

Parameter	Symbol	Min	Typ	Max	Unit	Notes
LVDS Strobe Width	tSW	200	-	-	ps	Vcm=1.2V VID = 400mV @65MHz
LVDS Receiver Skew Margin	tRSM	400	-	-	ps	



Note:  
RSM: Receiver Skew Margin  
SW: Strobe Width (Setup and Hold time; TCON Internal data sampling window)

<div>BOE</div>	PRODUCT GROUP	REV	ISSUE DATE
	TFT-LCD	Rev. 0	2025/03/14

## 5.0 SIGNAL TIMING SPECIFICATION

### 5.1 Timing Parameters (DE only mode)

< Table 8. Timing Table >

Item		Symbols		Min	Typ	Max	Unit
Clock	Frequency	1/Tc		52	65	71	MHz
	High Time	Tch		-	4/7Tc	-	
	Low Time	Tcl		-	3/7Tc	-	
Frame Period		Tv		48	60	63	Hz
Horizontal Active Display Term		Valid	t <sub>HV</sub>	-	1024	-	t <sub>CLK</sub>
		Total	t <sub>HP</sub>	1200	1344	1400	t <sub>CLK</sub>
Vertical Active Display Term		Valid	t <sub>VV</sub>	-	768	-	t <sub>HP</sub>
		Total	t <sub>VP</sub>	788	806	845	t <sub>HP</sub>

Note

- DE Only Mode , While operation, DE signal should be have the same cycle. The input of HSYNC & VSYNC signal does not have an effect on normal operation.
- Best operation clock frequency is 65 Mhz.
- Frequency = [H Total] \* [V Total] \* [vertical Frame rate]  
H Total, V Total and Frame rate should operate within the range between Frequency\_Min and Max
- Main frequency Max is 71 Mhz MHz without spread spectrum

< Table 9. LVDS Input SSCG>

Symbol	Parameter	Condition	Min	Typ	Max	Unit
F <sub>LVMOD</sub>	Modulating frequency of input clock during SSC	-	-	-	100	KHz
F <sub>LVDEV</sub>	Maximum deviation of input clock frequency during SSC		-3	-	+3	%

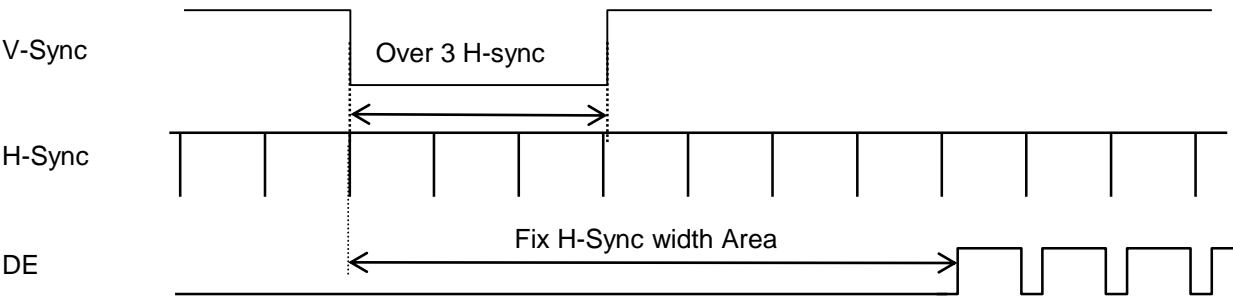
SPEC. NUMBER	SPEC. TITLE	PAGE
Spec-00000100	DV150X0M-N17 Product Specification Rev.0	16 OF 36



BOE	PRODUCT GROUP	REV	ISSUE DATE
	TFT-LCD	Rev. 0	2025/03/14

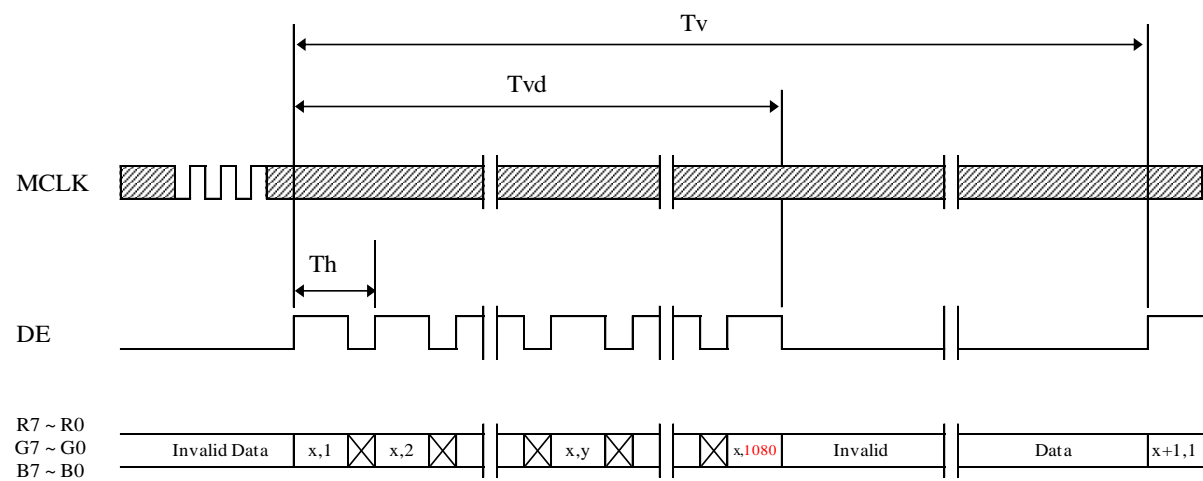
## 5.2 Signal Timing Waveform

### 5.2.1 Sync Timing Waveform



- 1) Need over 3 H-sync during V-Sync Low
- 2) Fix H-Sync width from V-Sync falling edge to first rising edge

### 5.2.2 Vertical Timing Waveform

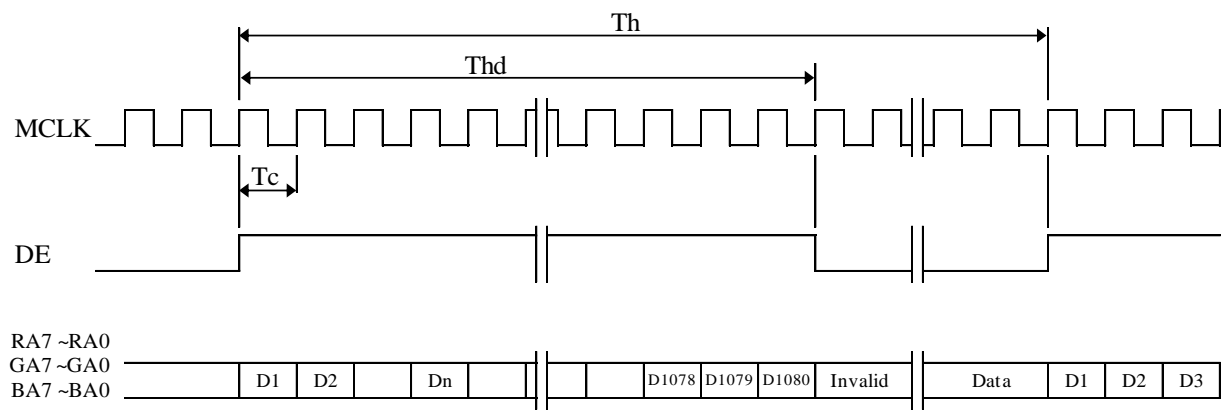


Note: While operation, DE signal should be have the same cycle and continuous;

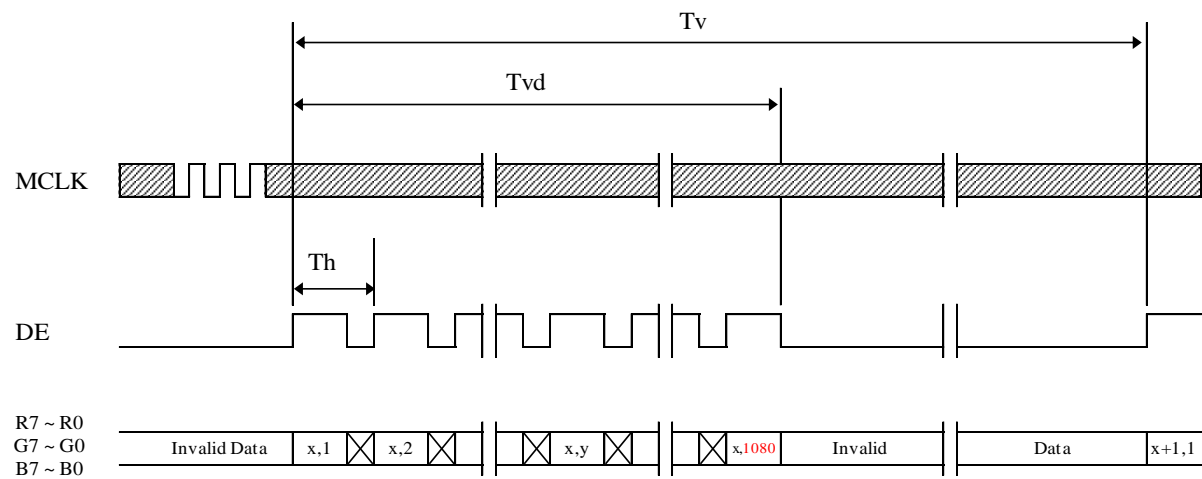
SPEC. NUMBER Spec-00000100	SPEC. TITLE DV150X0M-N17 Product Specification Rev.0	PAGE 17 OF 36
-------------------------------	---	------------------

5.2 Signal Timing Waveform

5.2.3 Horizontal Timing Waveform



5.2.2 Vertical Timing Waveform



BOE	PRODUCT GROUP	REV	ISSUE DATE
	TFT-LCD	Rev. 0	2025/03/14

### 5.3 Input Signals, Basic Display Colors and Gray Scale of Colors

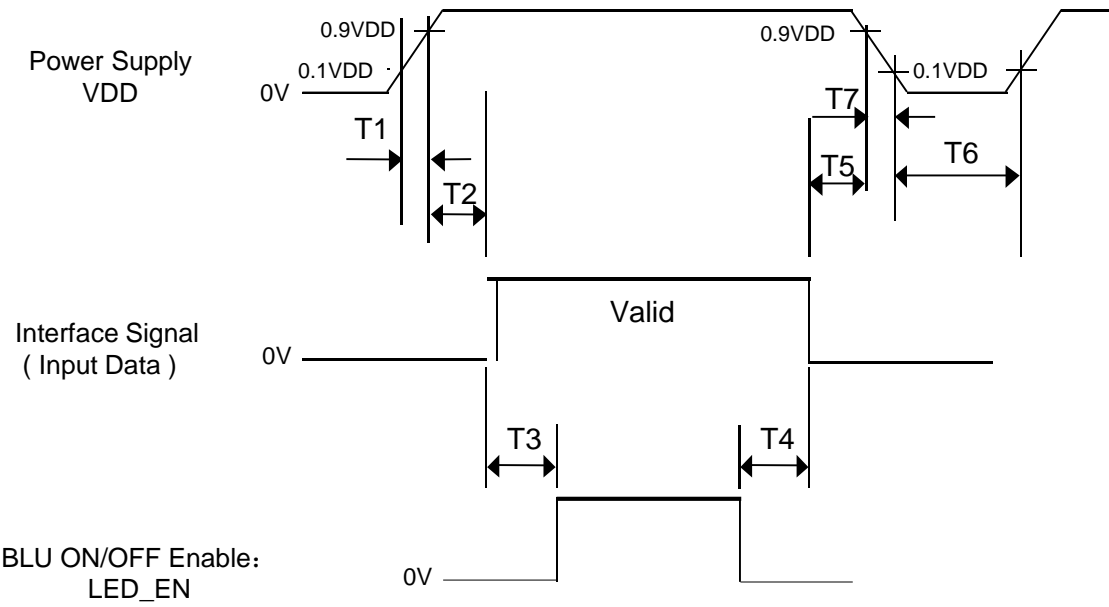
< Table 10. Input Signal and Display Color Table >

Color & Gray Scale		Input Data Signal																								
		Red Data								Green Data								Blue Data								
		R7	R6	R5	R4	R3	R2	R1	R0	G7	G6	G5	G4	G3	G2	G1	G0	B7	B6	B5	B4	B3	B2	B1	B0	
Basic Colors	Black	0	0	0	0	0	0	0	0	0	0	0	0	0	0	0	0	0	0	0	0	0	0	0	0	
	Blue	0	0	0	0	0	0	0	0	0	0	0	0	0	0	0	0	1	1	1	1	1	1	1	1	
	Green	0	0	0	0	0	0	0	0	1	1	1	1	1	1	1	1	0	0	0	0	0	0	0	0	
	Cyan	0	0	0	0	0	0	0	0	1	1	1	1	1	1	1	1	1	1	1	1	1	1	1	1	
	Red	1	1	1	1	1	1	1	1	0	0	0	0	0	0	0	0	0	0	0	0	0	0	0	0	
	Magenta	1	1	1	1	1	1	1	1	0	0	0	0	0	0	0	0	0	1	1	1	1	1	1	1	1
	Yellow	1	1	1	1	1	1	1	1	1	1	1	1	1	1	1	1	0	0	0	0	0	0	0	0	
	White	1	1	1	1	1	1	1	1	1	1	1	1	1	1	1	1	1	1	1	1	1	1	1	1	
Gray Scale of Red	Black	0	0	0	0	0	0	0	0	0	0	0	0	0	0	0	0	0	0	0	0	0	0	0	0	
	△	0	0	0	0	0	0	0	1	0	0	0	0	0	0	0	0	0	0	0	0	0	0	0	0	
	Darker	0	0	0	0	0	0	1	0	0	0	0	0	0	0	0	0	0	0	0	0	0	0	0	0	
	△	↑								↑								↑								
	▽	↓								↓								↓								
	Brighter	1	1	1	1	1	1	0	1	0	0	0	0	0	0	0	0	0	0	0	0	0	0	0	0	0
	▽	1	1	1	1	1	1	0	0	0	0	0	0	0	0	0	0	0	0	0	0	0	0	0	0	
	Red	1	1	1	1	1	1	1	1	0	0	0	0	0	0	0	0	0	0	0	0	0	0	0	0	0
Gray Scale of Green	Black	0	0	0	0	0	0	0	0	0	0	0	0	0	0	0	0	0	0	0	0	0	0	0	0	
	△	0	0	0	0	0	0	0	0	0	0	0	0	0	0	0	1	0	0	0	0	0	0	0	0	
	Darker	0	0	0	0	0	0	0	0	0	0	0	0	0	0	1	0	0	0	0	0	0	0	0	0	
	△	↑								↑								↑								
	▽	↓								↓								↓								
	Brighter	0	0	0	0	0	0	0	0	1	1	1	1	1	1	0	1	0	0	0	0	0	0	0	0	0
	▽	0	0	0	0	0	0	0	0	1	1	1	1	1	1	0	0	0	0	0	0	0	0	0	0	
	Green	0	0	0	0	0	0	0	0	1	1	1	1	1	1	1	1	0	0	0	0	0	0	0	0	0
Gray Scale of Blue	Black	0	0	0	0	0	0	0	0	0	0	0	0	0	0	0	0	0	0	0	0	0	0	0	0	
	△	0	0	0	0	0	0	0	0	0	0	0	0	0	0	0	0	0	0	0	0	0	0	0	1	
	Darker	0	0	0	0	0	0	0	0	0	0	0	0	0	0	0	0	0	0	0	0	0	0	1	0	
	△	↑								↑								↑								
	▽	↓								↓								↓								
	Brighter	0	0	0	0	0	0	0	0	0	0	0	0	0	0	0	0	1	1	1	1	1	1	0	1	
	▽	0	0	0	0	0	0	0	0	0	0	0	0	0	0	0	0	1	1	1	1	1	1	1	0	
	Blue	0	0	0	0	0	0	0	0	0	0	0	0	0	0	0	0	1	1	1	1	1	1	1	1	
Gray Scale of White	Black	0	0	0	0	0	0	0	0	0	0	0	0	0	0	0	0	0	0	0	0	0	0	0	0	
	△	0	0	0	0	0	0	0	1	0	0	0	0	0	0	0	1	0	0	0	0	0	0	0	1	
	Darker	0	0	0	0	0	0	1	0	0	0	0	0	0	0	1	0	0	0	0	0	0	0	1	0	
	△	↑								↑								↑								
	▽	↓								↓								↓								
	Brighter	1	1	1	1	1	1	0	1	1	1	1	1	1	0	1	1	1	1	1	1	1	0	1	1	
	▽	1	1	1	1	1	1	0	1	1	1	1	1	1	1	0	1	1	1	1	1	1	1	1	0	
	White	1	1	1	1	1	1	1	1	1	1	1	1	1	1	1	1	1	1	1	1	1	1	1	1	

SPEC. NUMBER	SPEC. TITLE	PAGE
Spec-00000100	DV150X0M-N17 Product Specification Rev.0	19 OF 36

5.4 Power Sequence

To prevent a latch-up or DC operation of the Module, the power on/off sequence shall be as shown in below



< Table 11. Sequence Table >

Parameter	Values			Units
	Min	Typ	Max	
T1	0.5	-	10	ms
T2	0	-	50	ms
T3	500	-	-	ms
T4	500	-	-	ms
T5	0	-	30	ms
T6	1	-	-	s

- Notes:
1. Back Light must be turn on after power for logic and interface signal are valid.
  2. Even though T1 is out of SPEC, it is still ok if the inrush current of VDD is below the limit.
  3. When VDD<0.9VDD(Typ.),Power off.
  4. T7 decreases smoothly, if there were rebounding voltage, it must smaller than 0.5 volts.

BOE	PRODUCT GROUP	REV	ISSUE DATE
	TFT-LCD	Rev. 0	2025/03/14

### 6.0 OPTICAL SPECIFICATIONS

The test of optical specifications shall be measured in a dark room (ambient luminance≤1 lux and temperature=25±2°C) with the equipment of Luminance meter system (Goniometer system and PR788) and test unit shall be located at an approximate distance 100cm from the LCD surface at a viewing angle of θ and Φ equal to 0°. We refer to θ<sub>θ=0</sub> (=θ<sub>3</sub> ) as the 3 o'clock direction (the “right”), θ<sub>θ=90</sub> (= θ<sub>12</sub> ) as the 12 o'clock direction (“upward”), θ<sub>θ=180</sub> (= θ<sub>9</sub> ) as the 9 o'clock direction (“left”) and θ<sub>θ=270</sub>(= θ<sub>6</sub> ) as the 6 o'clock direction (“bottom”). While scanning θ and/or Ø, the center of the measuring spot on the Display surface shall stay fixed. The measurement shall be executed after 30 minutes warm-up period. VDD shall be 3.3V at 25°C. Optimum viewing angle direction is 6 'clock.

< Table 12. Optical Table >

[VDD = 12.0V, Frame rate = 60Hz, Ta =25±2 °C]

Parameter		Symbol	Condition	Min	Typ	Max	Unit	Remark
Viewing Angle	Horizontal	$\Theta_3$	CR > 10	85	89	-	Deg.	Note 1
		$\Theta_9$		85	89	-	Deg.	
	Vertical	$\Theta_{12}$		85	89	-	Deg.	
		$\Theta_6$		85	89	-	Deg.	
Brightness		Lv	$\Theta = 0^\circ$ (Center) Normal Viewing Angle	1200	1500	-	nit	MDL
Contrast ratio		CR		700:1	1000:1	-		Note 2
White luminance uniformity		$\Delta Y$		75	80	-	%	Note 3
Reproduction of color	White	$W_x$		TYP. - 0.03	0.313	TYP. + 0.03		Note 4
		$W_y$			0.329			
	Red	$R_x$			0.651			
		$R_y$			0.342			
	Green	$G_x$			0.316			
		$G_y$			0.630			
	Blue	$B_x$			0.153			
		$B_y$			0.068			
Color Gamut(NTSC@1931)				68	72	-	%	
Response Time	G to G	$T_g$		-	14	25	ms	Note 5

SPEC. NUMBER Spec-00000100	SPEC. TITLE DV150X0M-N17 Product Specification Rev.0	PAGE 21 OF 36
-------------------------------	---	------------------

BOE	PRODUCT GROUP	REV	ISSUE DATE
	TFT-LCD	Rev. 0	2025/03/14

Note :

1. Viewing angle is the angle at which the contrast ratio is greater than 10. The viewing are determined for the horizontal or 3, 9 o'clock direction and the vertical or 6, 12 o'clock direction with respect to the optical axis which is normal to the LCD surface.
2. Contrast measurements shall be made at viewing angle of  $\theta= 0^{\circ}$  and at the center of the LCD surface. Luminance shall be measured with all pixels in the view field set first to white, then to the dark (black) state. (See Figure 1 shown in Appendix) Luminance Contrast Ratio (CR) is defined mathematically.

$$CR = \frac{\text{Luminance when displaying a white raster}}{\text{Luminance when displaying a black raster}}$$

- 3.The White luminance uniformity on LCD surface is then expressed as :  
 $\Delta Y = ( \text{Minimum Luminance of 9 points} / \text{Maximum Luminance of 9 points} ) * 100$   
 (See Figure 5 shown in Appendix).
4. The color chromaticity coordinates specified in Table 12.shall be calculated from the spectral data measured with all pixels first in red, green, blue and white. Measurements shall be made at the center of the panel. The BLU is used by BOE.
5. Response time Tg is the average time required for display transition by switching the input signal as below table and is based on Frame rate fV =60Hz to optimize.  
 Each time in below table is defined as Figure 2 and shall be measured by switching the input signal for “any level of gray(bright)”and “any level of gray(dark)”.

Measured Response Time		Target																
		0	15	31	47	63	79	95	111	127	143	159	175	191	207	223	239	255
Start	0																	
	15																	
	31																	
	47																	
	63																	
	79																	
	95																	
	111																	
	127																	
	143																	
	159																	
	175																	
	191																	
	207																	
	223																	
239																		
255																		

SPEC. NUMBER Spec-00000100	SPEC. TITLE DV150X0M-N17 Product Specification Rev.0	PAGE 22 OF 36
-------------------------------	---	------------------

BOE	PRODUCT GROUP	REV	ISSUE DATE
	TFT-LCD	Rev. 0	2025/03/14

## 7.0 MECHANICAL CHARACTERISTICS

### 7.1 Dimensional Requirements

Figure 3(located in Appendix) shows mechanical outlines for the model DV150X0M-N17 . Other parameters are shown in Table 13.

< Table 13. Dimensional Parameters >

Parameter	Specification	Unit
Dimensional outline	326.5(H)*253.5(V)*7.85(B)	mm
Weight	800±50	gram
Active area	304.128(H) × 228.096 (V)	mm
Pixel pitch	297(H) ×297(V)	um
Number of pixels	1024(H) ×768(V)(1 pixel = R + G + B dots)	pixels
Back-light	Up&Down edge side 2-LED Light bar Type	

### 7.2 Mounting

See FIGURE 5. (shown in Appendix)

### 7.3 Anti-Glare and Polarizer Hardness.

The surface of the LCD has an anti-glare coating to minimize reflection and a coating to reduce scratching.

SPEC. NUMBER Spec-00000100	SPEC. TITLE DV150X0M-N17 Product Specification Rev.0	PAGE 23 OF 36
-------------------------------	---	------------------

BOE	PRODUCT GROUP	REV	ISSUE DATE
	TFT-LCD	Rev. 0	2025/03/14

### 8.0 RELIABILITY TEST

The Reliability test items and its conditions are shown in below.

< Table 14. Reliability Test Parameters >

No	Test Items	Conditions
1	High temperature storage test	Ta = 80 °C, 300 hrs
2	Low temperature storage test	Ta = -30 °C, 300 hrs
3	High temperature & high humidity operation test	Ta = 60 °C, 90%RH, 300hrs
4	High temperature operation test	Ta = 80 °C, 300hrs ( The PWM needs to be set below 67%, so that the surface temperature is below 90 °C )
5	Low temperature operation test	Ta = -30 °C, 300hrs
6	Thermal shock	Ta = -20 °C ↔ 60 °C (0.5 hr), 100 cycle
7	Electro-static discharge test (non-operating)	Air : 150 pF, 330Ω, 15 KV Contact : 150 pF, 330Ω, 8 KV

This test condition is based on BOE module.

SPEC. NUMBER Spec-00000100	SPEC. TITLE DV150X0M-N17 Product Specification Rev.0	PAGE 24 OF 36
-------------------------------	---	------------------



BOE	PRODUCT GROUP	REV	ISSUE DATE
	TFT-LCD	Rev. 0	2025/03/14

9.0 PRODCUT SERIAL NUMBER



- ① : FG-CODE
- ② : Module ID bar code
- ③ : Module ID , The last digit is the revision code (not displayed during scanning), and the encoding rule for the first 17 digits is as follows :
- ④ : PPID bar code
- ⑤ : PPID , DV150X0MN17DMQ0
- ⑥ : Production year+production week
- ⑦ : QR code

MDL ID encoding rule:

Digit	1	2	3	4	5	6	7	8	9	10	11	12	13	14	15	16	17
Code	S	L	S	A	1	0	8	5	9	4	2	0	0	0	1	D	B
Description	Product Code/GBN→FG-CODE—一一对应		Grade	line	Year		Month	Model Extension Code (Last 4 Digits of FG-CODE )				Serial No. Hex-Decimal 000000-FFFFFF					

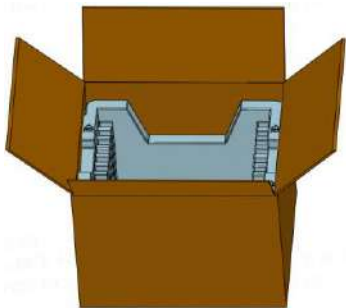
BOE	PRODUCT GROUP	REV	ISSUE DATE
	TFT-LCD	Rev. 0	2025/03/14

### 10.0 PACKING INFORMATION

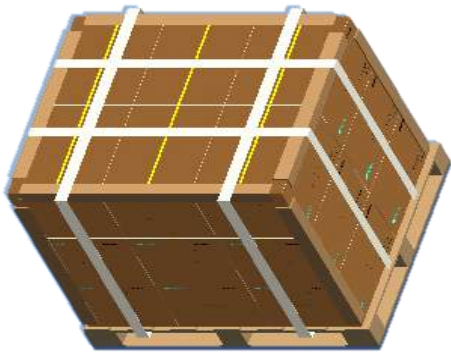
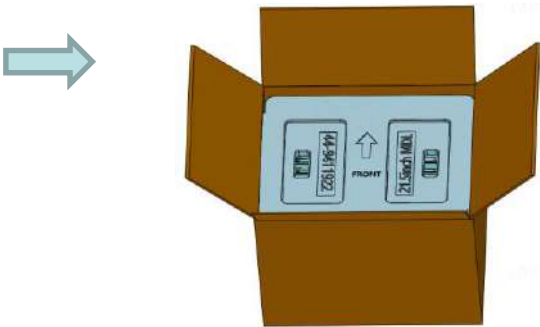
BOE provides the standard shipping container for customers, unless customer specifies their packing information. The standard packing method and Barcode information are shown in below.

#### 10.1 Packing Order

1. Put 1 EPS bottom into the inner box.



2. Put each module into a PE bag. PCB facing down. Insert 11 Pcs M DL into each box.



4. Put 8 ea Paper Corner around the Boxes (198 ea MDLs per pallet) and Pack with 4 packing belts.

3. Put 6ea Box on surface of Pallet, pile 3 layers. Total 18 ea boxes per pallet.

SPEC. NUMBER	SPEC. TITLE	PAGE
Spec-00000100	DV150X0M-N17 Product Specification Rev.0	26 OF 36

BOE	PRODUCT GROUP	REV	ISSUE DATE
	TFT-LCD	Rev. 0	2025/03/14

10.2 Packing Note

- Box Dimension : 400mm(L)×365mm(W)×329mm(H)
- Package Quantity in one Box : 11pcs

10.3 Box Label

- Label Size : 100mm (L) × 50mm (W)
  - Contents  
Model : DV150X0M-N17  
Q`ty : Module 11 Q`ty in one box  
Serial No. : Box Serial No.  
Date : Packing Date

BOE

FUZHOU BOE OPTOELECTRONICS  
TECHNOLOGY Co.,LTD

MODEL: XXXXXXXX-XXX ①

Q'TY: XXX ②

SERIAL NO: XXXXXXXXXXXX ③

DATE: XXXX.XX.XX ④

Box ID 条形码

XXXXXXXXXXXX ⑤

XXXX ⑥

RoHS Compliant

UL US

打印内容，说明如下:

- ① FG-CODE
- ② 产品数量
- ③ Box ID, 编码规则如下
- ④ Box Packing 日期
- ⑤ 产品物料号(客户端)
- ⑥ FG-CODE 后四位

Digit Code	1	2	3	4	5	6	7	8	9	10	11	12	13
Code	X	X	X	X	1	6	3	D	0	0	1	A	1
Descripti on	Products G BN		Gra de	Line	Year		Mon th	Revisi on Code	Serial No.				

SPEC. NUMBER Spec-00000100	SPEC. TITLE DV150X0M-N17 Product Specification Rev.0	PAGE 27 OF 36
-------------------------------	---	------------------

	PRODUCT GROUP	REV	ISSUE DATE
	TFT-LCD	Rev. 0	2025/03/14

11.0 PRECAUTIONS

Please pay attention to the followings when you use this TFT LCD Module.

11.1 Mounting Precautions

- Use finger-stalls with soft gloves in order to keep display clean during the incoming inspection and assembly process.
- You must mount a module using specified mounting holes (Details refer to the drawings)
- You should consider the mounting structure so that uneven force (ex. Twisted stress, Concentrated stress)is not applied to the module. And the case on which a module is mounted should have sufficient strength so that external force is not transmitted directly to the module.
- Do not apply mechanical stress or static pressure on module; Abnormal display cause by pressing some parts of module during assembly process , do not belong to product failure, the press should be agreed by two sides.
- Determine the optimum mounting angle, refer to the viewing angle range in the specification for each model.
- Do not apply mechanical stress or static pressure on module , and avoid impact, vibration and falling.
- Acetic acid type and chlorine type materials for the cover case are not desirable because the former generates corrosive gas of attacking the polarizer at high temperature and the latter causes circuit break by electro-chemical reaction.
- Protection film for polarizer on the module should be slowly peeled off before display.
- Be careful to prevent water & chemicals contact the module surface.
- You should adopt radiation structure to satisfy the temperature specification.
- Do not touch, push or rub the exposed polarizers with glass, tweezers or anything harder than HB pencil lead. And please do not rub with dust clothes with chemical treatment. Do not touch the surface of polarizer for bare hand or greasy cloth.(Some cosmetics are detrimental to the polarizer.)
- When the surface becomes dusty, please wipe gently with absorbent cotton or other soft materials like chamois soaks with petroleum benzine. Normal-hexane & alcohol is recommended for cleaning the adhesives used to attach front / rear polarizers. Do not use acetone, toluene , because they cause chemical damage to the polarizer.
- Wipe off saliva or water drops as soon as possible. Their long time contact with polarizer causes deformations and color fading..

SPEC. NUMBER	SPEC. TITLE	PAGE
Spec-00000100	DV150X0M-N17 Product Specification Rev.0	28 OF 36

BOE	PRODUCT GROUP	REV	ISSUE DATE
	TFT-LCD	Rev. 0	2025/03/14

- This module has its circuitry PCB’s on the rear side and Driver IC, should be handled carefully in order not to be stressed.
- Avoid impose stress on PCB and Driver IC during assembly process ,Do not drawing, bending, COF package & wire
- Do not disassemble the module.

### 11.2 Operating Precautions

- Do not connector or disconnect the cable to/from the Module at the “Power On” Condition.
- When the module is operating, do not lose CLK, ENAB signals. If any one of these signals is lost, the module would be damaged.
- Obey the supply voltage sequence. If wrong sequence is applied, the module would be damaged.
- Do not allow to adjust the adjustable resistance or switch
- The electrochemical reaction caused by DC voltage will lead to LCD module degradation, so DC drive should be avoided.
- The LCD modules use C-MOS LSI drivers, so customers are recommended that any unused input terminal would be connected to Vdd or Vss, do not input any signals before power is turn on, and ground you body, work/assembly area, assembly equipment to protect against static electricity.
- Do not exceed the absolute maximum rating value. (supply voltage variation, input voltage variation, variation in part contents and environmental temperature, and so on) Otherwise the Module may be damaged.
- Module has high frequency circuits. Sufficient suppression to the electromagnetic interference shall be done by system manufacturers. Grounding and shielding methods may be important to minimized the interference.
- Design the length of cable to connect between the connector for back-light and the converter as shorter as possible and the shorter cable shall be connected directly , The long cable between back-light and Converter may cause the Luminance of LED to lower and need a higher startup voltage
- The cables should be as short as possible between System Board and PCB interface.
- Connectors are precision devices to transmit electrical signals, and operators should plug in parallel
- Be careful for condensation at sudden temperature change. Condensation makes damage to polarizer or electrical contacted parts. And after fading condensation, smear or spot will occur.

SPEC. NUMBER	SPEC. TITLE	PAGE
Spec-00000100	DV150X0M-N17 Product Specification Rev.0	29 OF 36

BOE	PRODUCT GROUP	REV	ISSUE DATE
	TFT-LCD	Rev. 0	2025/03/14

### 11.3 Electrostatic Discharge Precautions

- Avoid the use work clothing made of synthetic fibers. We recommend cotton clothing or other conductivity-treated fibers.
- Since a module is composed of electronic circuits, it is not strong to electrostatic discharge. Make certain that treatment persons are connected to ground through wrist band etc.
- Do not close to static electricity to avoid product damage.
- Do not touch interface pin directly.

### 11.4 Precautions for Strong Light Exposure

- Do not leave the module operation or storage in Strong light . Strong light exposure causes degradation of polarizer and color filter.

### 11.5 Precautions for Storage

#### A. Atmosphere Requirement

ITEM	UNIT	MIN	TYP	MAX
Storage Temperature	(°C)	5	25	40
Storage Humidity	(%rH)	40	50	75
Storage Life	6 months			
Storage Condition	<ul style="list-style-type: none"> <li>• The storage room should be equipped with a dark and good ventilation facility.</li> <li>• Prevent products from being exposed to the direct sunlight, moisture and water.</li> <li>• The product need to keep away from organic solvent and corrosive gas.</li> <li>• Be careful for condensation at sudden temperature change.</li> <li>• Storage condition is guaranteed under packing conditions.</li> </ul>			

#### B. Package Requirement

- The product should be placed in a sealed polythene bag.
- Product Should be placed on the pallet, Which is away from the floor, Be cautions not to pile the product up.
- The polarizer surface should not come in contact with any other object. It is recommended that they be stored in the container in which they were shipped.
- As the original protective film, do not use the adhesive protective film to avoid change of Pol color and characteristic.

SPEC. NUMBER Spec-00000100	SPEC. TITLE DV150X0M-N17 Product Specification Rev.0	PAGE 30 OF 36
-------------------------------	---	------------------

BOE	PRODUCT GROUP	REV	ISSUE DATE
	TFT-LCD	Rev. 0	2025/03/14

### 11.6 Precautions for protection film

- Remove the protective film slowly, keeping the removing direction approximate 30-degree not vertical from panel surface, If possible, under ESD control device like ion blower, and the humidity of working room should be kept over 50%RH to reduce the risk of static charge.
- People who peeled off the protection film should wear anti-static strap and grounded well.

### 11.7 Appropriate Condition for Commercial Display

-Generally large-sized LCD modules are designed for consumer applications . Accordingly, long-term display like in Commercial Display application, can cause uneven display including image sticking. To optimize module's lifetime and function, several operating usages are required.

#### 1. Normal operating condition

- Temperature: 20±15℃
- Operating Ambient Humidity : 55±20%
- Display pattern: dynamic pattern (Real display)
- Well-ventilated place is recommended to set up Commercial Display system

#### 2. Special operating condition

- Ambient condition
  - Well-ventilated place is recommended to set up Commercial Display system.
- Power and screen save
  - Periodical power-off or screen save is needed after long-term display.
- As the low temperature, the response time is greatly delayed. As the high temperatures (higher than the operating temperature) the LCD module may turn black screen. The above phenomenon cannot explain the failure of the display. When the temperature returns to the normal operating temperature, the LCD module will return to normal display.
- When expose to drastic fluctuation of temperature (hot to cold or cold to hot ) ,the LCD module may be affected; Specifically, drastic temperature fluctuation from cold to hot ,produces dew on the LCD module 's surface which may affect the operation of the polarizer and LCD module
- Do not exceed the absolute maximum rating value. (supply voltage variation, input voltage variation, variation in part contents and environmental temperature, and so on) Otherwise the Module may be damaged.
- Products exposed to low temperature environment for a long time, need to carry out necessary protection , low temperature environment is usually refrigerators , vending machine Etc...
- Long time and large angle forward use or unconventional use , It is strongly recommended to contact BOE for filed application engineering advice

SPEC. NUMBER	SPEC. TITLE	PAGE
Spec-00000100	DV150X0M-N17 Product Specification Rev.0	31 OF 36



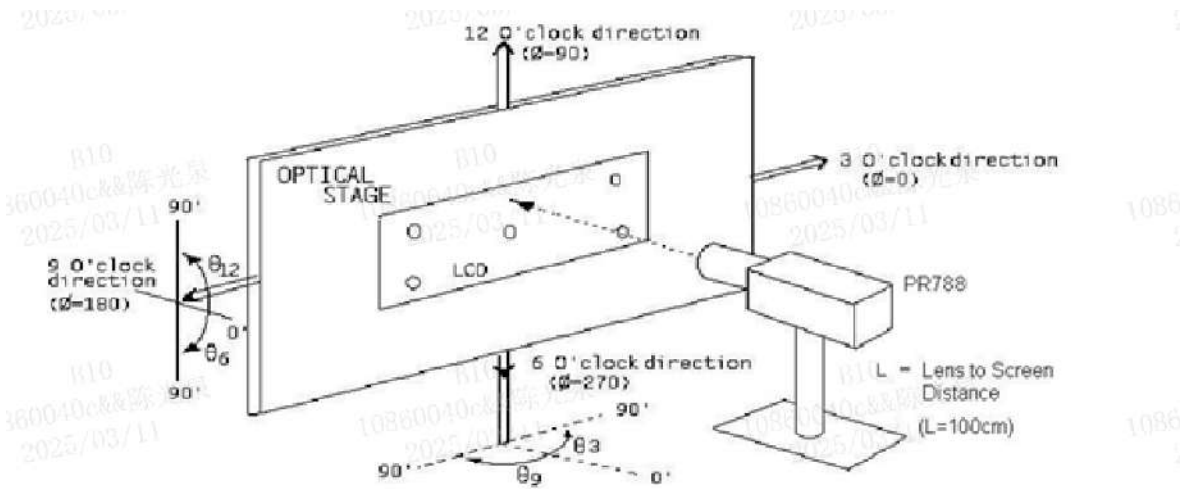
BOE	PRODUCT GROUP	REV	ISSUE DATE
	TFT-LCD	Rev. 0	2025/03/14
<p>h. Product reliability and functions are only guaranteed when the product is used under right operation usages. If product will be used in extreme conditions such as high temperature, high humidity, high altitude, special display images, running time, long time operation, outdoor operation, etc. It is strongly recommended to contact BOE for filed application engineering advice. Otherwise, its reliability and function may not be guaranteed. Extreme conditions are commonly found at airports, transit stations, banks, stock market and controlling systems.</p> <p>3. Operating usages to protect against image sticking due to long-term static display.</p> <p>a. Suitable operating time: under 24 hours a day.</p> <p>b. Static information display recommended to use with moving image.</p> <p>- Cycling display between 5 minutes' information(static) display and 10 seconds' moving image.</p> <p>c. Background and character (image) color change</p> <p>- Use different colors for background and character, respectively.</p> <p>- Change colors themselves periodically.</p> <p>d. Avoid combination of background and character with large different luminance.</p> <p>1) Abnormal condition just means conditions except normal condition.</p> <p>2) Black image or moving image is strongly recommended as a screen save</p> <p>4. Lifetime in this spec. is guaranteed only when Commercial Display is used according to operating usages.</p> <p>5. Module should be turned clockwise based on front view when used in portrait mode.</p> <p>11.8 Other Precautions</p> <p>A. LC Leak</p> <ul style="list-style-type: none"> <li>• If the liquid crystal material leaks from the panel, it is recommended to wash the LC with acetone or ethanol and then burn it.</li> <li>• If the liquid crystal material leaks from the panel, it should be kept away from the eyes or mouth. In case of contact with hands, skin or clothes, it has to be washed away thoroughly with soap.</li> <li>• If LC in mouth, mouth need to be washed, drink plenty of water to induce vomiting and follow medical advice.</li> <li>• If LC touch eyes, eyes need to be washed with running water at least 15 minutes.</li> </ul> <p>B. Rework</p> <ul style="list-style-type: none"> <li>• When returning the module for repair or etc., Please pack the module not to be broken. We recommend to use the original shipping packages.</li> </ul>			
SPEC. NUMBER	SPEC. TITLE	PAGE	
Spec-00000100	DV150X0M-N17 Product Specification Rev.0	32 OF 36	



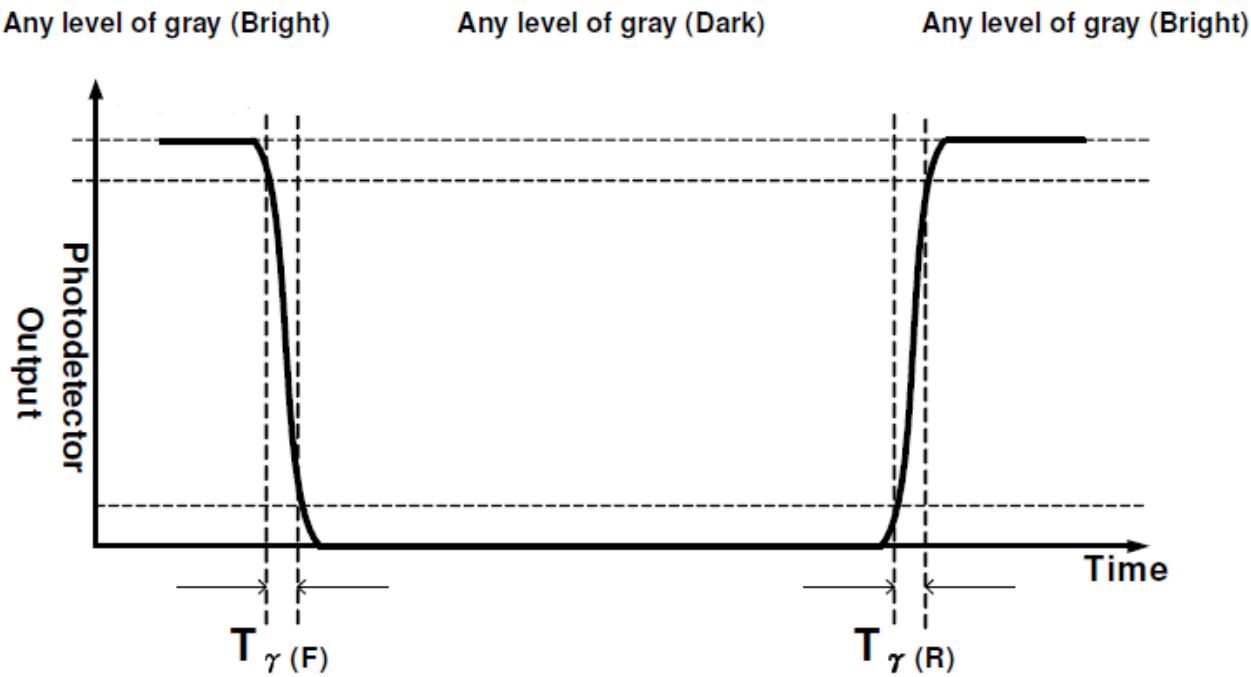
BOE	PRODUCT GROUP	REV	ISSUE DATE
	TFT-LCD	Rev. 0	2025/03/14

12.0 APPENDIX

< Figure 1. Measurement Set Up >



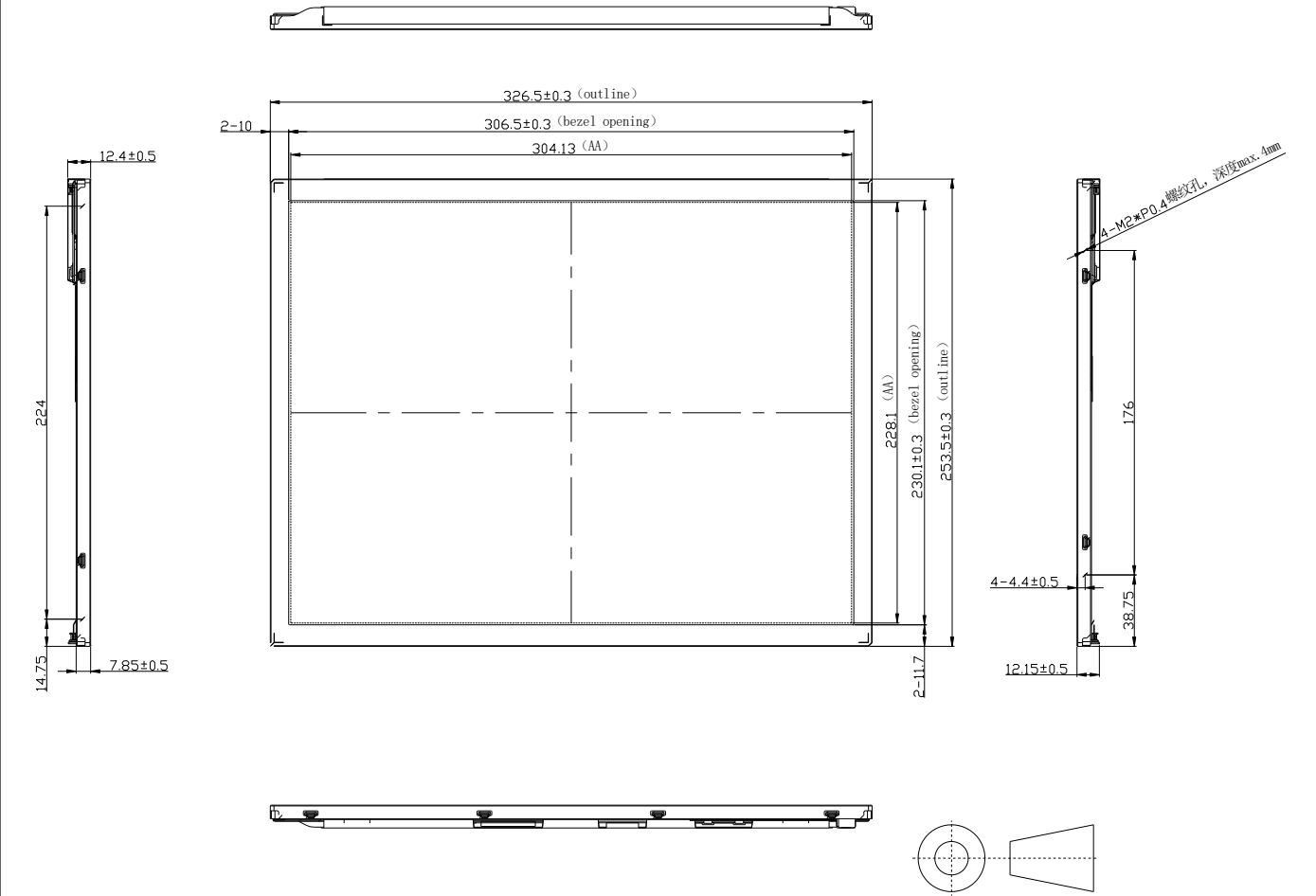
< Figure 2. Response Time Testing >



SPEC. NUMBER Spec-00000100	SPEC. TITLE DV150X0M-N17 Product Specification Rev.0	PAGE 33 OF 36
-------------------------------	---	------------------

BOE	PRODUCT GROUP	REV	ISSUE DATE
	TFT-LCD	Rev. 0	2025/03/14

< Figure 3.TFT-LCD Module Outline Dimensions (Front View) >



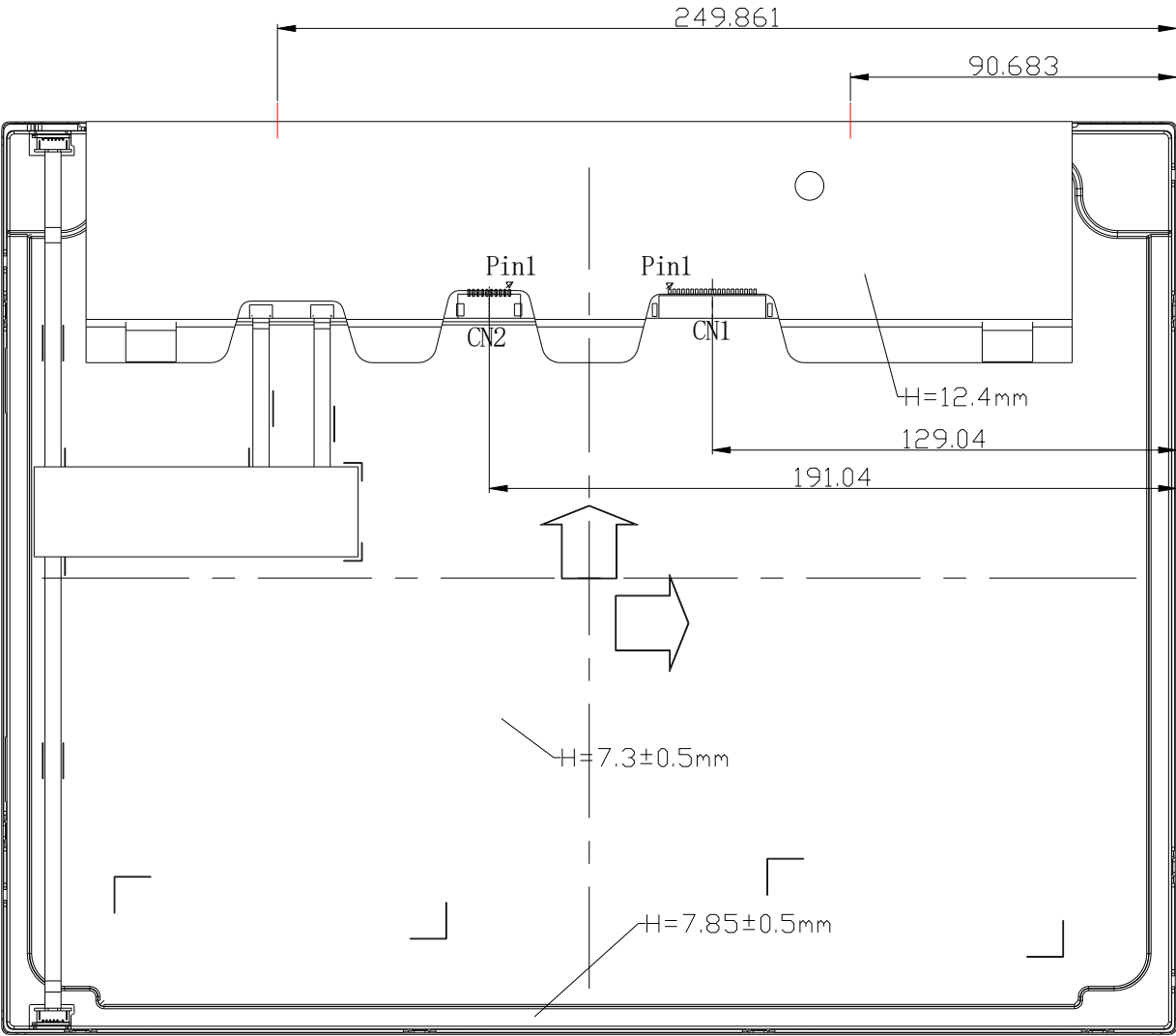
NOTE:

- 1、 CONFORMITY WITH ROHS & HALOGEN FREE
- 2、 OPERATING TEMP.: -30℃ ~ +80℃;STORAGE TEMP.: -30℃ ~ +80℃
- 3、 CNT1: MSB240420 CNT2: 12507WR-H10L
- 4、 Bezel: SGLC, Primary color
- 5、 Side user holes: M2, Depth max.4mm, Torque max.3kgf.cm
- 6、 PCB Cover: Black Mylar
- 7、 Back Cover: AL, Primary color

SPEC. NUMBER	SPEC. TITLE	PAGE
Spec-00000100	DV150X0M-N17 Product Specification Rev.0	34 OF 36

BOE	PRODUCT GROUP	REV	ISSUE DATE
	TFT-LCD	Rev. 0	2025/03/14

< Figure 4.TFT-LCD Module Outline Dimensions (Rear View) >

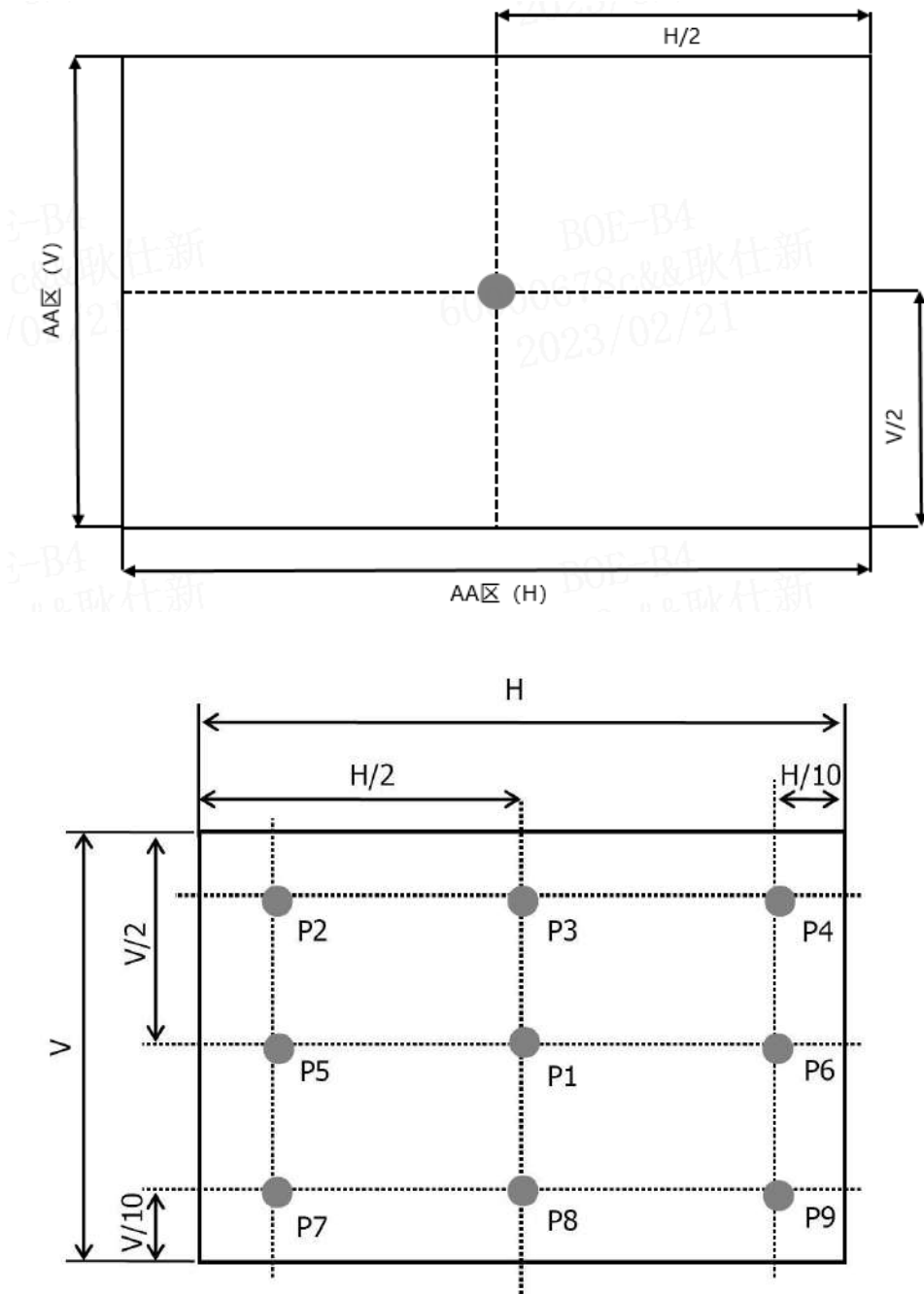


- NOTE:
- 1、CONFORMITY WITH ROHS & HALOGEN FREE
  - 2、OPERATING TEMP.: -30℃ ~ +80℃;STORAGE TEMP.: -30℃ ~ +80℃
  - 3、CNT1: MSB240420 CNT2: 12507WR-H10L
  - 4、Bezel: SGLC, Primary color
  - 5、Side user holes: M2, Depth max.4mm, Torque max.3kgf.cm
  - 6、PCB Cover: Black Mylar
  - 7、Back Cover: AL, Primary color

SPEC. NUMBER	SPEC. TITLE	PAGE
Spec-00000100	DV150X0M-N17 Product Specification Rev.0	35 OF 36

BOE	PRODUCT GROUP	REV	ISSUE DATE
	TFT-LCD	Rev. 0	2025/03/14

< Figure 5. White Luminance and Uniformity Measurement Locations >



SPEC. NUMBER Spec-00000100	SPEC. TITLE DV150X0M-N17 Product Specification Rev.0	PAGE 36 OF 36
-------------------------------	---	------------------