



AUO Display+

Product Specification

G133HAN03.0

() Preliminary Specifications

(V) Final Specifications

Module	13.3 Inch Color TFT-LCD
Model Name	G133HAN03.0
Note	LED Backlight with driving circuit design

Company	
<hr/>	
Checked & Approved by	Date
<hr/>	<hr/>

Approved by	Date
<hr/> Ginger Lin	<hr/> 2021/9/15
Prepared by	
<hr/> CH Tsai	<hr/> 2021/09/15
General Display Business Unit / AUO Display Plus Corporation	



Contents

1. Operating Precautions	4
2. General Description.....	4
2.1 Display Characteristics.....	5
2.2 Optical Characteristics	5
3. Functional Block Diagram.....	9
4. Absolute Maximum Ratings.....	11
4.1 Absolute Ratings of TFT LCD Module.....	11
4.2 Absolute Ratings of Environment	11
5. Electrical Characteristics	12
5.1 TFT LCD Module	12
5.2 Backlight Unit.....	15
6. Signal Interface Characteristic.....	17
6.1 Pixel Format Image.....	17
6.2 Integration Interface Requirement	18
6.3 Interface Timing	19
6.4 Power ON/OFF Sequence	21
7. Panel Reliability Test	24
7.1 Vibration Test	24
7.2 Shock Test	24
7.3 Reliability Test.....	24
8. Mechanical Characteristics.....	25
8.1 Total solution Outline Dimension.....	25
9. Label and Packaging	27
9.1 Shipping Label (on the rear side of TFT-LCD display).....	27
9.2 Carton Package	28
10. Safty	30

Record of Revision

Version and Date	Page	Old description	New Description
0.1 2021/9/15	All	First Preliminary Edition	
0.2 2022/4/7	6		Add color coordinates white
	20		Update Timing Characteristics
	28,29		Add carton package
1.0 2022/8/17		Preliminary spec version 0.2	Final spec version 1.0
1.1 2022/12/15		Old format	New format

1. Operating Precautions

- 1) Since front polarizer is easily damaged, please be cautious and not to scratch it.
- 2) Be sure to turn off power supply when inserting or disconnecting from input connector.
- 3) Wipe off water drop immediately. Long contact with water may cause discoloration or spots.
- 4) When the panel surface is soiled, wipe it with absorbent cotton or soft cloth.
- 5) Since the panel is made of glass, it may be broken or cracked if dropped or bumped on hard surface.
- 6) Since CMOS LSI is used in this module, take care of static electricity and insure human earth when handling.
- 7) Do not open nor modify the module assembly.
- 8) Do not press the reflector sheet at the back of the module to any direction.
- 9) In case if a module has to be put back into the packing container slot after it was taken out from the container, do not press the center of the LED Reflector edge. Instead, press at the far ends of the LED Reflector edge softly. Otherwise the TFT Module may be damaged.
- 10) At the insertion or removal of the Signal Interface Connector, be sure not to rotate nor tilt the Interface Connector of the TFT Module.
- 11) TFT-LCD Module is not allowed to be twisted & bent even force is added on module in a very short time. Please design your display product well to avoid external force applying to module by end-user directly.
- 12) Small amount of materials without flammability grade are used in the TFT-LCD module. The TFT-LCD module should be supplied by power complied with requirements of Limited Power Source (IEC60950-1 or UL60950-1), or be applied exemption.
- 13) Severe temperature condition may result in different luminance, response time.
- 14) Continuous operating TFT-LCD Module under high temperature environment may accelerate LED light bar exhaustion and reduce luminance dramatically.
- 15) The data on this specification sheet is applicable when TFT-LCD module is placed in landscape position.
- 16) Continuous displaying fixed pattern may induce image sticking or abnormal display .
It's recommended to use screen saver or power off panel periodically.

2. General Description



AUO Display+

This specification applies to the 13.3 inch Color a-Si TFT-LCD Module G133HAN03.0. The display supports the FHD_1920(H)x1080(V) screen format and 16.2M colors (RGB 6-bits +FRC). All input signals are eDP interface and this module contains with an LED driver for backlight.

2.1 Display Characteristics

The following items are characteristics summary total solution on the table under 25 °C condition:

Items	Unit	Specifications
Screen Diagonal	[inch]	13.3
Active Area	[mm]	293.76(H) x 165.24(V)
Pixels H x V		1920x3(RGB) x 1080
Pixel Pitch	[mm]	0.1529 x 0.1529
Pixel Arrangement		R.G.B. Vertical Stripe
Display Mode		AHVA, Normally Black
Normal Input Voltage VDD	[Volt]	3.3 (Typ.)
LCD Power Consumption	[Watt]	5.0 (max) @Mosaic pattern
Weight (Total)	[Grams]	230 (max)
Physical Size (Total)	[mm]	303.86(W)X187.7(H) Typ.
Thickness (Total)	[mm]	3.0 (Max.)
Electrical Interface		eDP 1.2
Support Color		16.2M (6bit+FRC)
Temperature Range Operating Storage (Non-Operating)	[°C] [°C]	0 to +50°C -20°C to +60°C
RoHS Compliance		RoHS Compliance
Light Bar Unit		LED, Non-replaceable

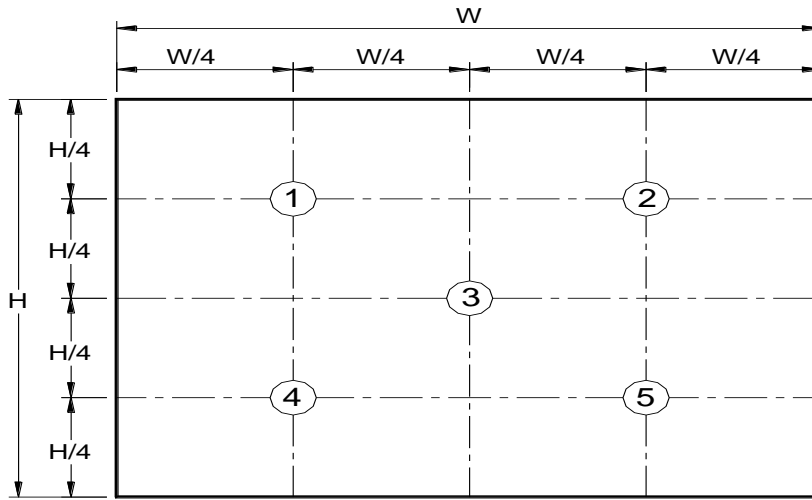
2.2 Optical Characteristics

The optical characteristics are measured with total solution under stable conditions at 25 °C:

AUO Display+

Item	Unit	Conditions	Min.	Typ.	Max.	Note
Viewing Angle	[degree]	Horizontal (Right)	80	89	-	3,6
		CR = 10 (Left)	80	89	-	
		Vertical (Up)	80	89	-	
		CR = 10 (Down)	80	89	-	
Contrast ratio		Normal Direction	600	800	-	3,4
Response Time		Raising + Falling	-	25	35	3,5
Color Coordinates (CIE) White		Red x	0.622	0.652	0.682	3
		Red y	0.304	0.334	0.364	
		Green x	0.273	0.303	0.333	
		Green y	0.598	0.628	0.658	
		Blue x	0.125	0.155	0.185	
		Blue y	0.021	0.051	0.081	
		White x	0.283	0.313	0.343	
		White y	0.299	0.329	0.359	
Central Luminance	[cd/m ²]		280	350	-	1,2
Luminance Uniformity	[%]	5 points	-	80	-	1,2
NTSC	[%]		-	72	-	

Note 1: 5 points' position (Ref: Active area)



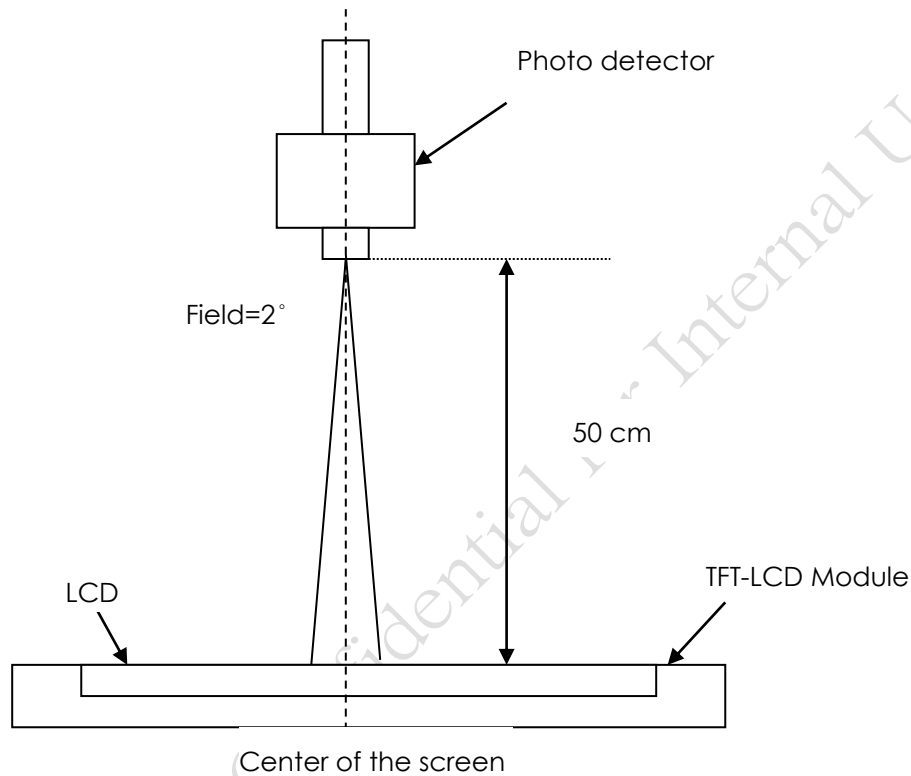
Note 2: The luminance uniformity of 5 points is defined by dividing the maximum luminance values by the minimum test point luminance

$$\delta_{w5} = \frac{\text{Maximum Brightness of five points}}{\text{Minimum Brightness of five points}}$$

AUO Display+

Note 3: Measurement method

The LCD module should be stabilized at given temperature for 30 minutes to avoid abrupt temperature change during measuring. In order to stabilize the luminance, the measurement should be executed after lighting Backlight for 30 minutes in a stable, windless and dark room, and it should be measured in the center of screen.



Note 4: Definition of contrast ratio:

Contrast ratio is calculated with the following formula.

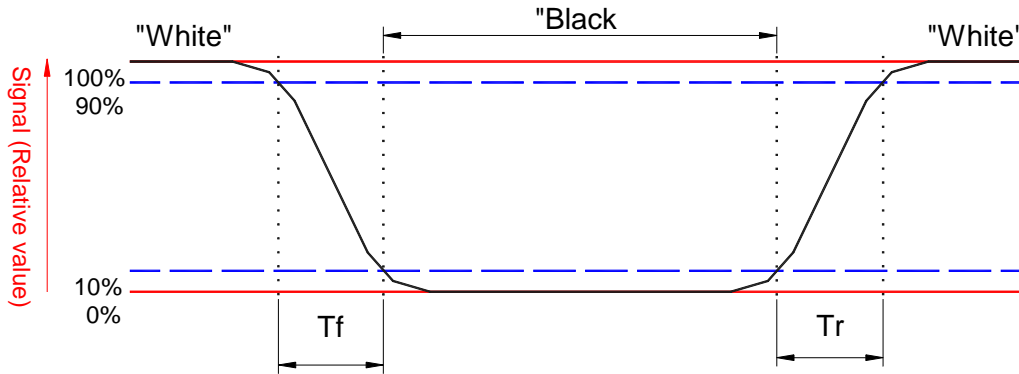
$$\text{Contrast ratio (CR)} = \frac{\text{Brightness on the "White" state}}{\text{Brightness on the "Black" state}}$$

Note 5: Definition of response time:

The output signals of BM-7 or equivalent are measured when the input signals are changed from "Black" to

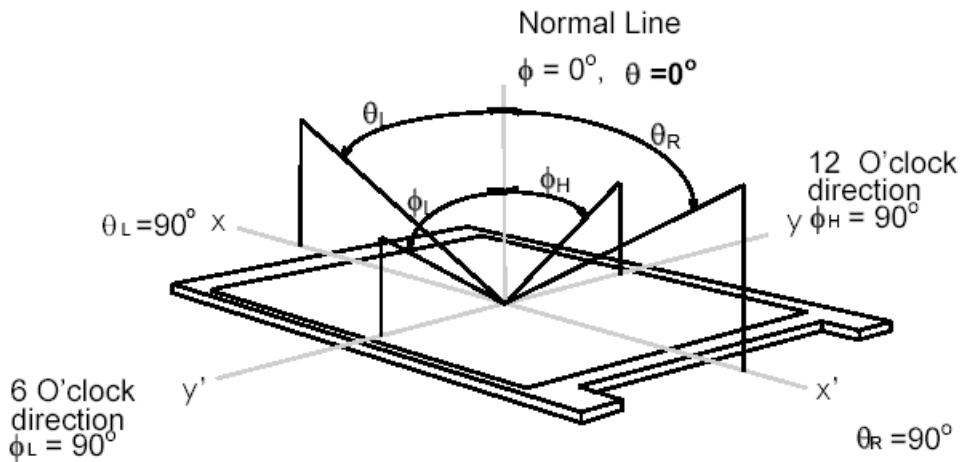
AUO Display+

"White" (falling time) and from "White" to "Black" (rising time), respectively. The response time interval is between the 10% and 90% of amplitudes. Refer to figure as below.



Note 6: Definition of viewing angle

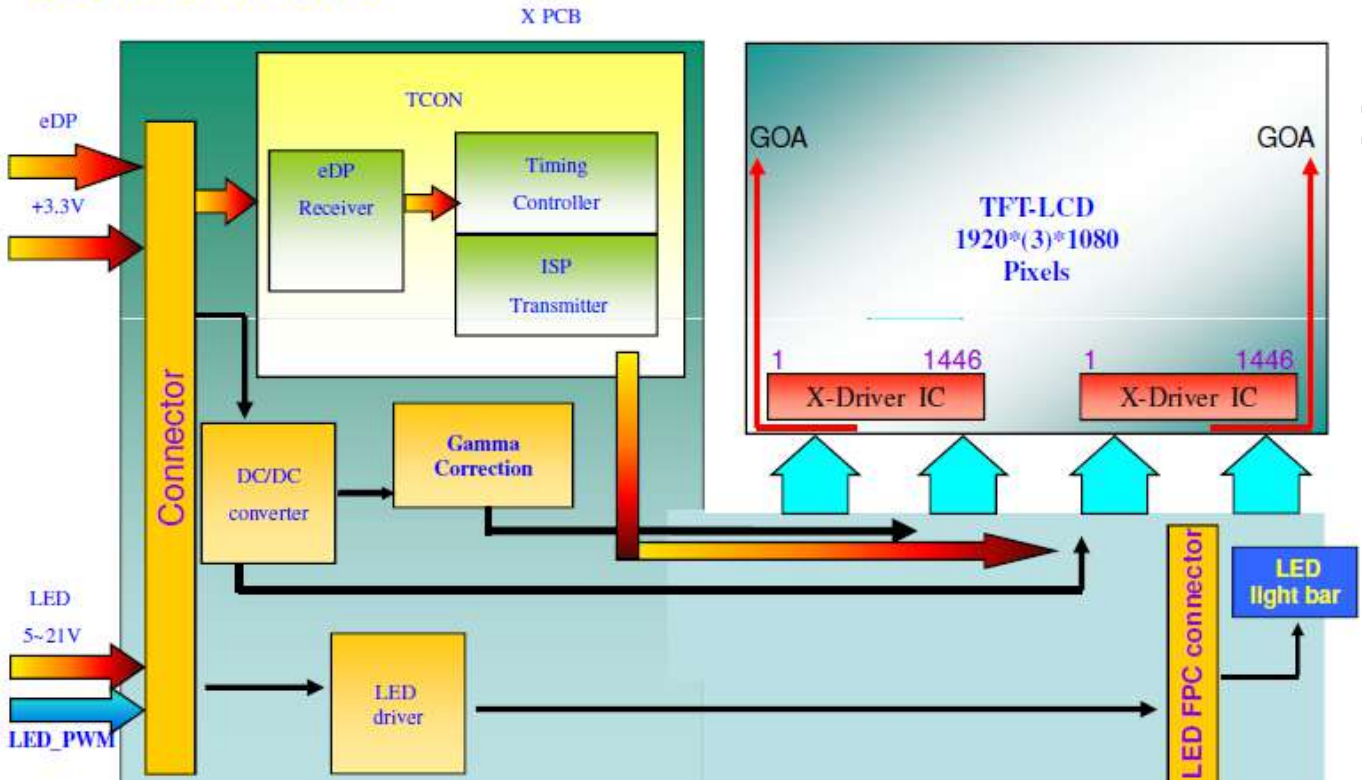
Viewing angle is the measurement of contrast ratio >10, at the screen center, over a 180° horizontal and 180° vertical range (off-normal viewing angles). The 180° viewing angle range is broken down as follows; 90° (θ) horizontal left and right and 90° (ϕ) vertical, high (up) and low (down). The measurement direction is typically perpendicular to the display surface with the screen rotated about its center to develop the desired measurement viewing angle.



3. Functional Block Diagram

The following diagram shows the functional block of the 13.3 inch color TFT/LCD module:

LED driver on board



AUO Display Plus Confidential

AUO Display+

4. Absolute Maximum Ratings

An absolute maximum rating of the module is as following:

4.1 Absolute Ratings of TFT LCD Module

Item	Symbol	Min	Max	Unit	Conditions
Logic/LCD Drive Voltage	VDD	-0.3	+4.0	[Volt]	Note 1,2
BL Input Voltage	VLED	-0.3	+26.5	[Volt]	Note 1,2
Signal Voltage	RinI-/+ , ClkIN-/+	-0.3	VDD+0.3	[Volt]	Note 1, I=0,1,2,3
Signal Voltage	LED_EN , LED_PWM	-0.3	+5.5	[Volt]	Note 1,2

4.2 Absolute Ratings of Environment

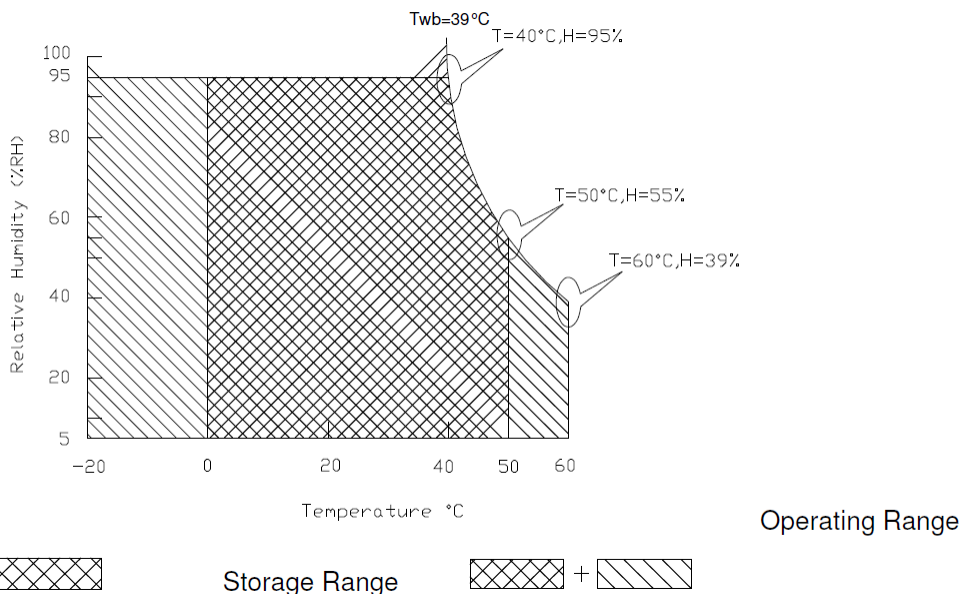
Item	Symbol	Min	Max	Unit	Conditions
Operating Temp.	TOP	0	+50	[°C]	Note 4
Operation Humidity	HOP	5	95	[%RH]	Note 4
Storage Temperature	TST	-20	+60	[°C]	Note 4
Storage Humidity	HST	5	95	[%RH]	Note 4

Note 1: At Ta (25°C)

Note 2: Permanent damage to the device may occur if exceed maximum values

Note 3: LED specification refer to section 5.2

Note 4: For quality performance, please refer to AUO IIS (Incoming Inspection Standard)



AUO Display+

5.1.2 Signal Electrical Characteristics

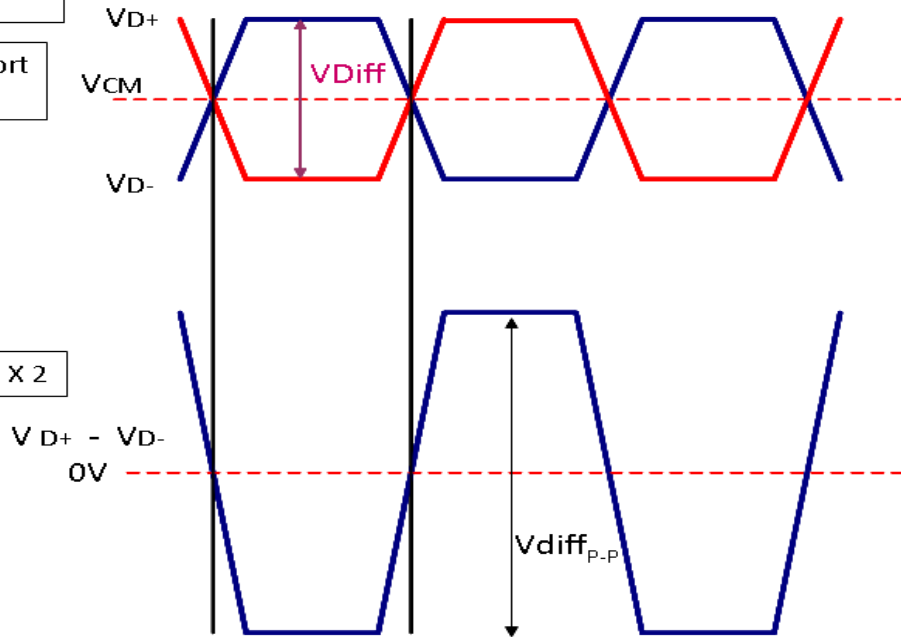
Signal electrical characteristics are as follows;

Display Port main link signal:

Differential pair VD+ , VD-
Which is one Display port
Main link

VCM of Display port
Main link

$$V_{diff_{P-P}} = [(VD+) - (VD-)] \times 2$$

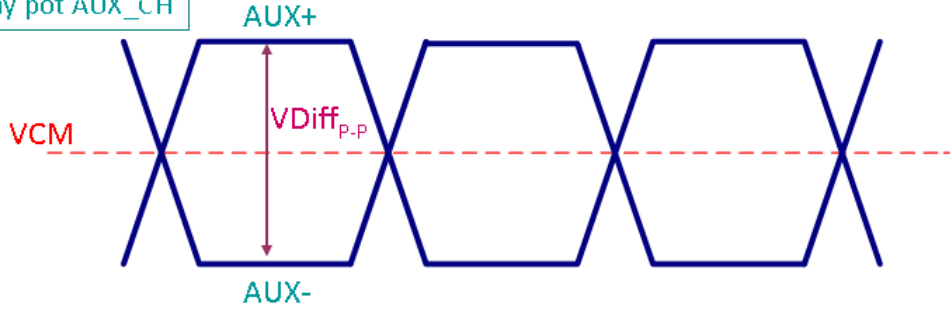


Display port main link					
		Min	Typ	Max	unit
VCM	RX input DC Common Mode Voltage		0		V
VDiff _{P-P}	Peak-to-peak Voltage at a receiving Device	150		1320	mV

AUO Display+

Display Port AUX_CH signal:

Differential AUX+ , AUX-
Which is Display pot AUX_CH



Display port AUX_CH					
		Min	Typ	Max	unit
VCM	AUX DC Common Mode Voltage		0		V
VDiff _{p-p}	AUX Peak-to-peak Voltage at a receiving Device	270		800	mV

Display Port VHPD signal:

Display port VHPD					
		Min	Typ	Max	unit
VHPD	HPD Voltage (input impedance 1KΩ)	2.25	-	3.6	V



AUO Display+

5.2 Backlight Unit

5.2.1 LED characteristics

Parameter	Symbol	Min	Typ	Max	Units	Condition
Backlight Power Consumption	PLED	-	-	3.8	[Watt]	(Ta=25°C, Note 1)
LED Life-Time	N/A	-	15,000	-	Hour	(Ta=25°C, Note 2)

Note 1: Calculator value for reference $P_{LED} = V_F$ (Normal Distribution) * I_F (Normal Distribution) / Efficiency

Note 2: The LED life-time define as the estimated time to 50% degradation of initial luminous.

5.2.2 Backlight input signal characteristics

Parameter	Symbol	Min	Typ	Max	Units	Remark
LED Power Supply	VLED (Note 1)	5	12.0	21.0	[Volt]	Define as Connector Interface (Ta=25°C)
Inrush Current	IRush	-	-	2000	[mA]	
LED Enable Input High Level	VLED_EN (Note 2)	2.2	-	5.5	[Volt]	
LED Enable Input Low Level		-	-	0.6	[Volt]	
PWM Logic Input High Level	VLED_PWM (Note 2)	2.2	-	5.5	[Volt]	
PWM Logic Input Low Level		-	-	0.6	[Volt]	
PWM Input Frequency	FPWM	200	1K	20K	Hz	
PWM Duty Ratio	Duty	1 (Note 3)	--	100	%	

Note 1 : Measured in panel VLED

Note 2 : Recommend system pull up/down resistor no bigger than 10kohm



AUO Display+

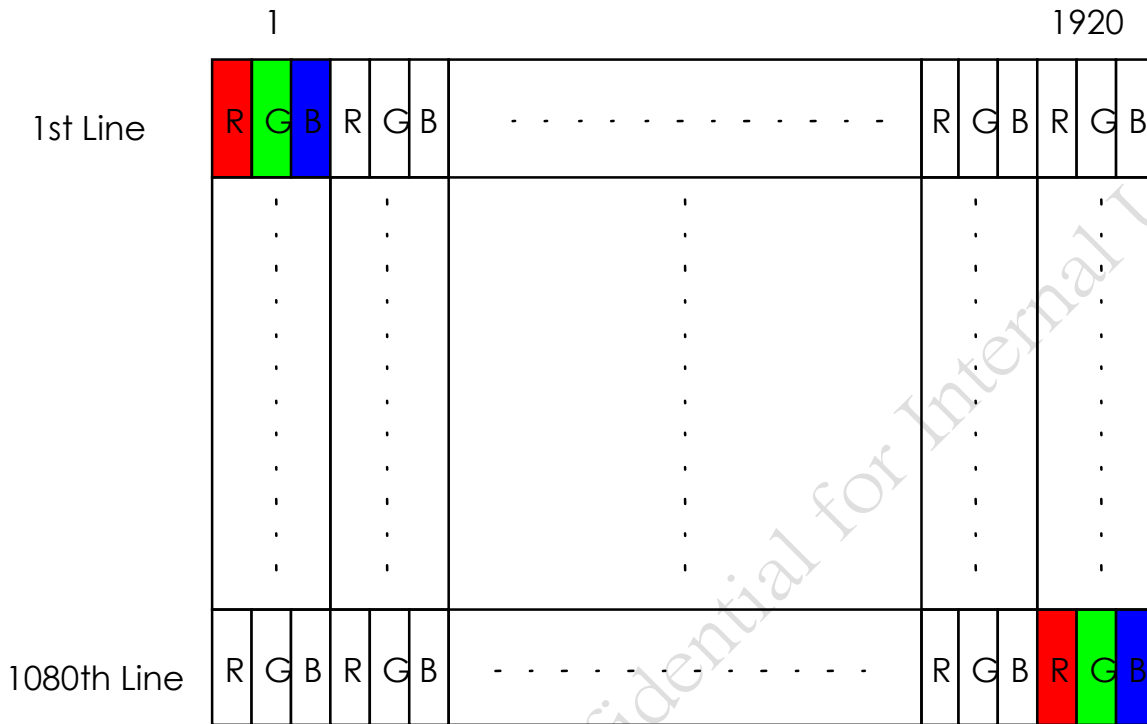
Note 3 : If the PWM duty ratio(min) is set between 5% to 1% , the PWM input frequency should be set below 1KHz . The brightness-duty characteristic might not be able to keep in it's linearity if the dimming control is operated in 1% to 5% range

AUO Display Plus Confidential for Internal Use Only

6. Signal Interface Characteristic

6.1 Pixel Format Image

Following figure shows the relationship of the input signals and LCD pixel format.



AUO Display+

6.2 Integration Interface Requirement

6.2.1 Connector Description (LCM)

Physical interface is described as for the connector on module.

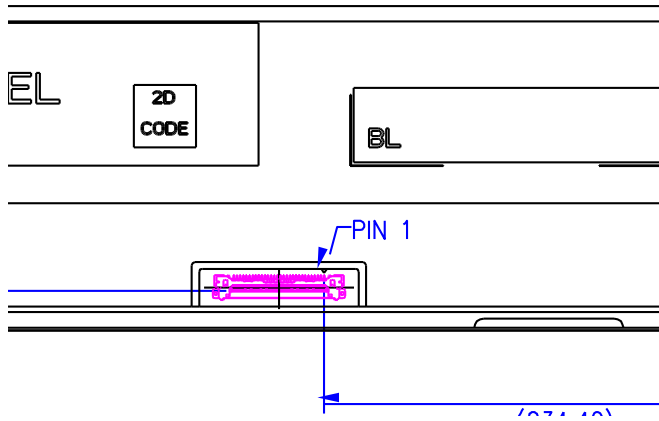
These connectors are capable of accommodating the following signals and will be following components.

Connector Name / Designation	For Signal Connector
Manufacturer	IPEX
Type / Part Number	IPEX 20765-030E-11A or compatible (0.5mm pitch)
Mating Housing/Part Number	IPEX 20453-330T-13 or compatible

6.2.2 Pin Assignment (LCM)

Pin	Symbol	Description
1	NC	Reserved for LCD supplier
2	GND	High Speed Ground
3	Lane1_N	Complement Signal Link Lane 1
4	Lane1_P	True Signal Link Lane 1
5	GND	High Speed Ground
6	Lane0_N	Complement Signal Link Lane 0
7	Lane0_P	True Signal Link Lane 0
8	GND	High Speed Ground
9	AUX_CH_P	True Signal Auxiliary Channel
10	AUX_CH_N	Complement Signal Auxiliary Channel
11	GND	High Speed Ground
12	VDD	LCD logic power
13	VDD	LCD logic power
14	NC	LCD Panel Self Test Enable (Optional)
15	GND	LCD logic and driver ground
16	GND	LCD logic and driver ground
17	HPD	HPD Signal pin
18	BL_GND	LED Backlight ground
19	BL_GND	LED Backlight ground
20	BL_GND	LED Backlight ground
21	BL_GND	LED Backlight ground
22	VLED_EN	LED Backlight control on/off control
23	VLED_PWM	System PWM signal input for dimming
24	NC	Reserved for LCD supplier
25	NC	Reserved for LCD supplier
26	VLED	LED Backlight Power
27	VLED	LED Backlight Power
28	VLED	LED Backlight Power
29	VLED	LED Backlight Power
30	NC	Reserved for LCD supplier

6.2.5 Connector Pin 1 Locations



6.3 Interface Timing

6.3.1 Timing Characteristics

Basically, interface timings should match the 1920x1080 /60Hz manufacturing guide line timing.

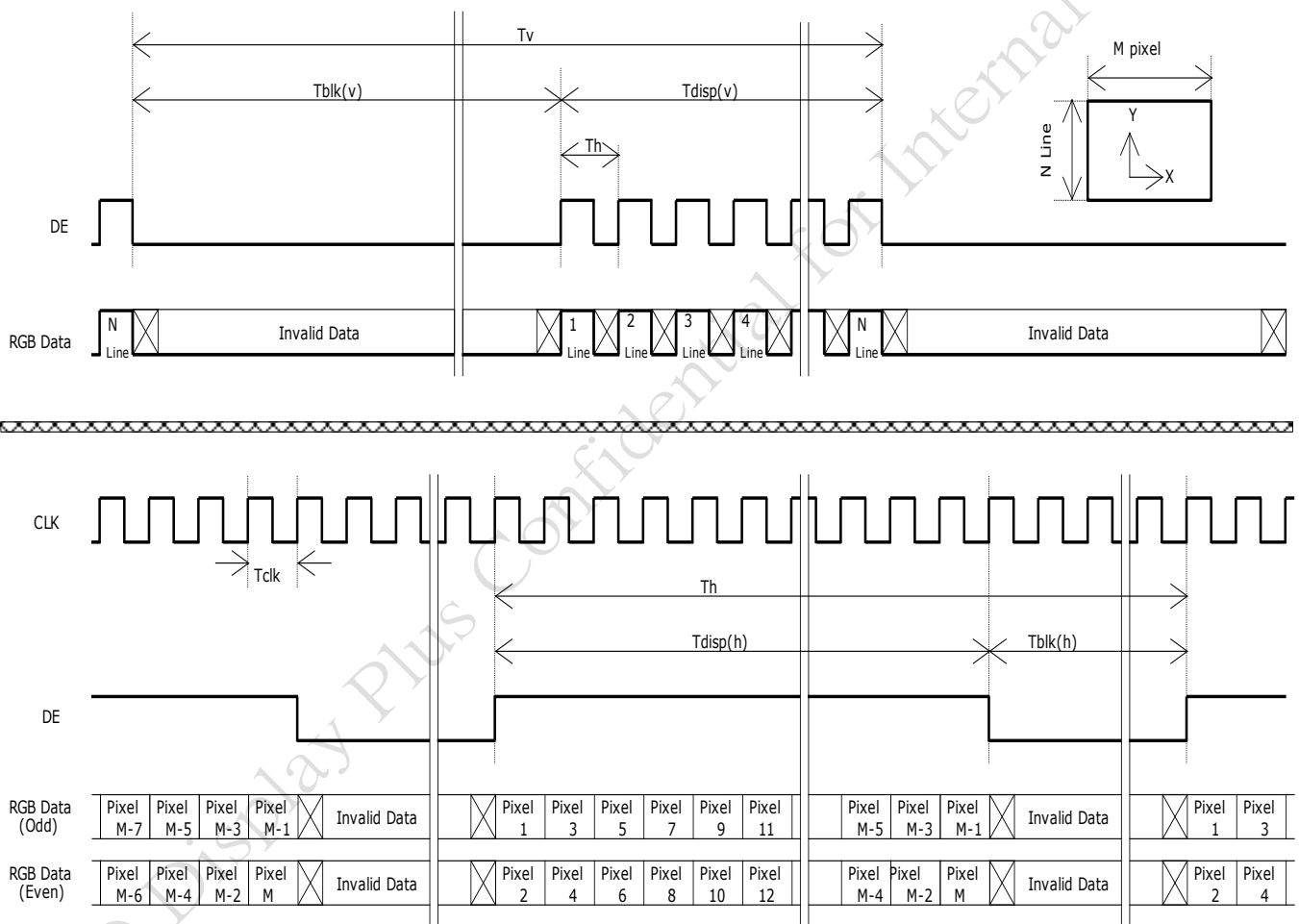
Parameter	Symbol	Min.	Typ.	Max.	Unit
Frame Rate	-		60.42		Hz
Clock frequency	$1/T_{\text{Clock}}$		139.75		MHz

AUO Display+

Vertical Section	Period	T_v	1112	T_{Line}
	Active	T_{VD}	1080	
	Blanking	T_{VB}	32	
Horizontal Section	Period	T_H	2080	T_{Clock}
	Active	T_{HD}	1920	
	Blanking	T_{HB}	160	

Note 1 : The above is as optimized setting

6.3.2 Timing diagram

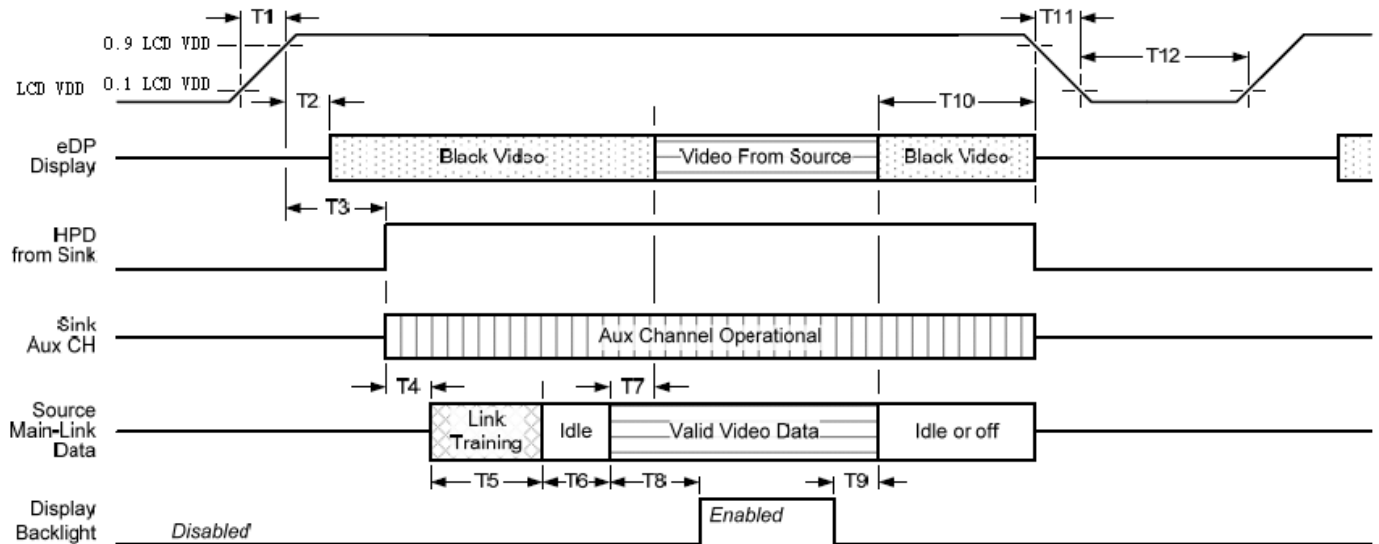


AUO Display+

6.4 Power ON/OFF Sequence

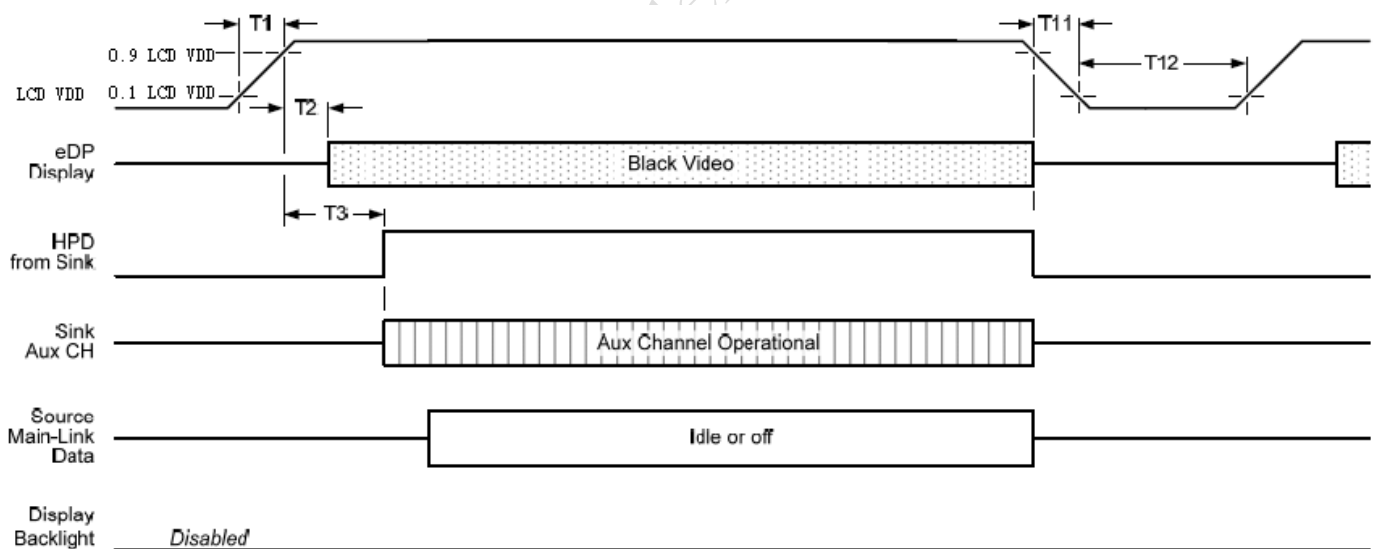
Power on/off sequence is as follows. Interface signals and LED on/off sequence are also shown in the chart. Signals from any system shall be Hi-Z state or low level when VDD is off

Display Port panel power sequence:



Display port interface power up/down sequence, normal system operation

Display Port AUX_CH transaction only:



Display port interface power up/down sequence, AUX_CH transaction only

AUO Display+

Display Port panel power sequence timing parameter:

Timing parameter	Description	Reqd. by	Limits			Notes
			Min.	Typ.	Max.	
T1	power rail rise time, 10% to 90%	source	0.5ms		10ms	
T2	delay from LCDVDD to black video generation	sink	0ms		200ms	prevents display noise until valid video data is received from the source
T3	delay from LCDVDD to HPD high	sink	0ms		200ms	sink AUX_CH must be operational upon HPD high.
T4	delay from HPD high to link training initialization	source				allows for source to read link capability and initialize.
T5	link training duration	source				dependant on source link to read training protocol.
T6	link idle	source				Min accounts for required BS-Idle pattern. Max allows for source frame synchronization.
T7	delay from valid video data from source to video on display	sink	0ms		50ms	max allows sink validate video data and timing.
T8	delay from valid video data from source to backlight enable	source				source must assure display video is stable.
T9	delay from backlight disable to end of valid video data	source				source must assure backlight is no longer illuminated.
T10	delay from end of valid video data from source to power off	source	0ms		500ms	
T11	power rail fall time, 90% to 10%	source			10ms	
T12	power off time	source	500ms			

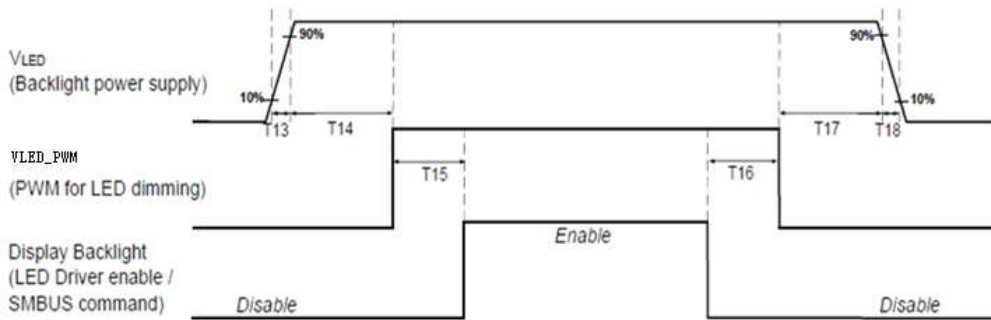
Note1: The sink must include the ability to generate black video autonomously. The sink must automatically enable black video under the following conditions:

- upon LCD VDD power on (with in T2 max)-when the "Novideostream_Flag" (VB-ID Bit 3) is received from the source (at the end of T9).
- when no main link data, or invalid video data, is received from the source. Black video must be displayed within 64ms (typ) from the start of either condition. Video data can be deemed invalid based on MSA and timing information, for example.

Note 2: The sink may implement the ability to disable the black video function, as described in Note 1, above, for system development and debugging purpose.

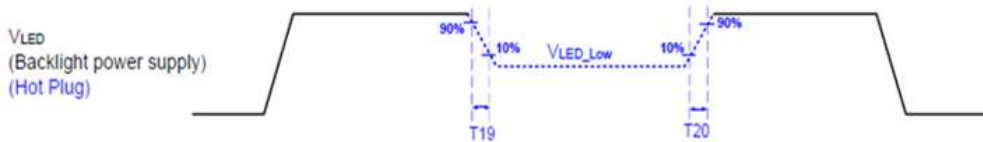
Note 3: The sink must support AUX_CH polling by the source immediately following LCD VDD power on without causing damage to the sink device (the source can re-try if the sink is not ready). The sink must be able to respond to an AUX_CH transaction with the time specified within T3 max.

Display Port Panel B/L power sequence timing parameter:



	Min (ms)	Max (ms)
T13	0.2	10
T14	0	-
T15	0	-
T16	0	-
T17	0	-
T18	0.2	10
T19	1*	-
T20	1*	-

Note : When the adapter is hot plugged, the backlight power supply sequence is shown as below.



Seamless change: $T19/T20 = 5 \times T_{P_{PWM}}^*$

* $T_{P_{PWM}} = 1/P_{PWM}$ Frequency

Note 1 : If T14,T15,T16,T17<10ms , The display garbage may occur. We suggest T14,T15,T16,T17>10ms to avoid the display garbage.

Note 2 : If T13 or T18<0.5ms , the inrush current may cause the damage of fuse. If T13 or T18<0.5ms , the inrush current I^2t is under typical melt of fuse Spec. , there is no mentioned problem.

7. Panel Reliability Test

7.1 Vibration Test

Test Spec:

- Test method: Non-Operation
- Acceleration: 1.5 G
- Frequency: 10 - 500Hz Random
- Sweep: 30 Minutes each Axis (X, Y, Z)

7.2 Shock Test

Test Spec:

- Test method: Non-Operation
- Acceleration: 220 G , Half sine wave
- Active time: 2 ms
- Pulse: X,Y,Z .one time for each side

7.3 Reliability Test

Items	Required Condition	Note
Temperature Humidity Bias	Ta= 40°C, 90%RH, 300h	
High Temperature Operation	Ta= 50°C, Dry, 300h	
Low Temperature Operation	Ta=0°C, 300h	
High Temperature Storage	Ta= 60°C, 300h	
Low Temperature Storage	Ta= -20°C, 250h	
Thermal Shock Test	Ta=-20°C(30min) ~60°C(30min), 100cycles condition.	
ESD	Contact: ±8 KV Air : ±15 KV	Note 1

Note1: According to EN 61000-4-2, ESD class B: Some performance degradation allowed. No data lost
 . Self-recoverable. No hardware failures.

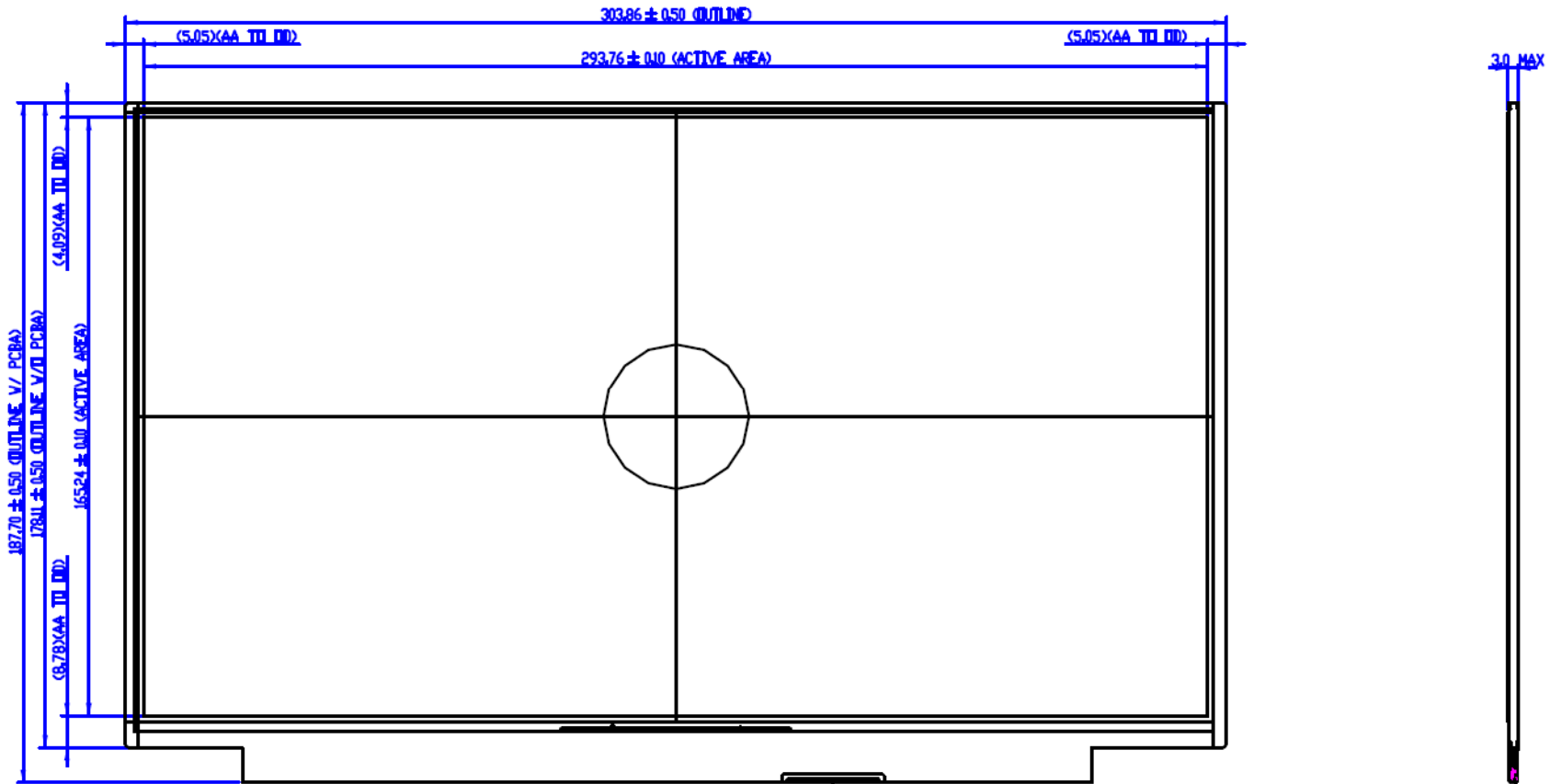
Remark: MTBF (Excluding the LED): 30,000 hours with a confidence level 90%



AUO Display+

8. Mechanical Characteristics

8.1 Total solution Outline Dimension

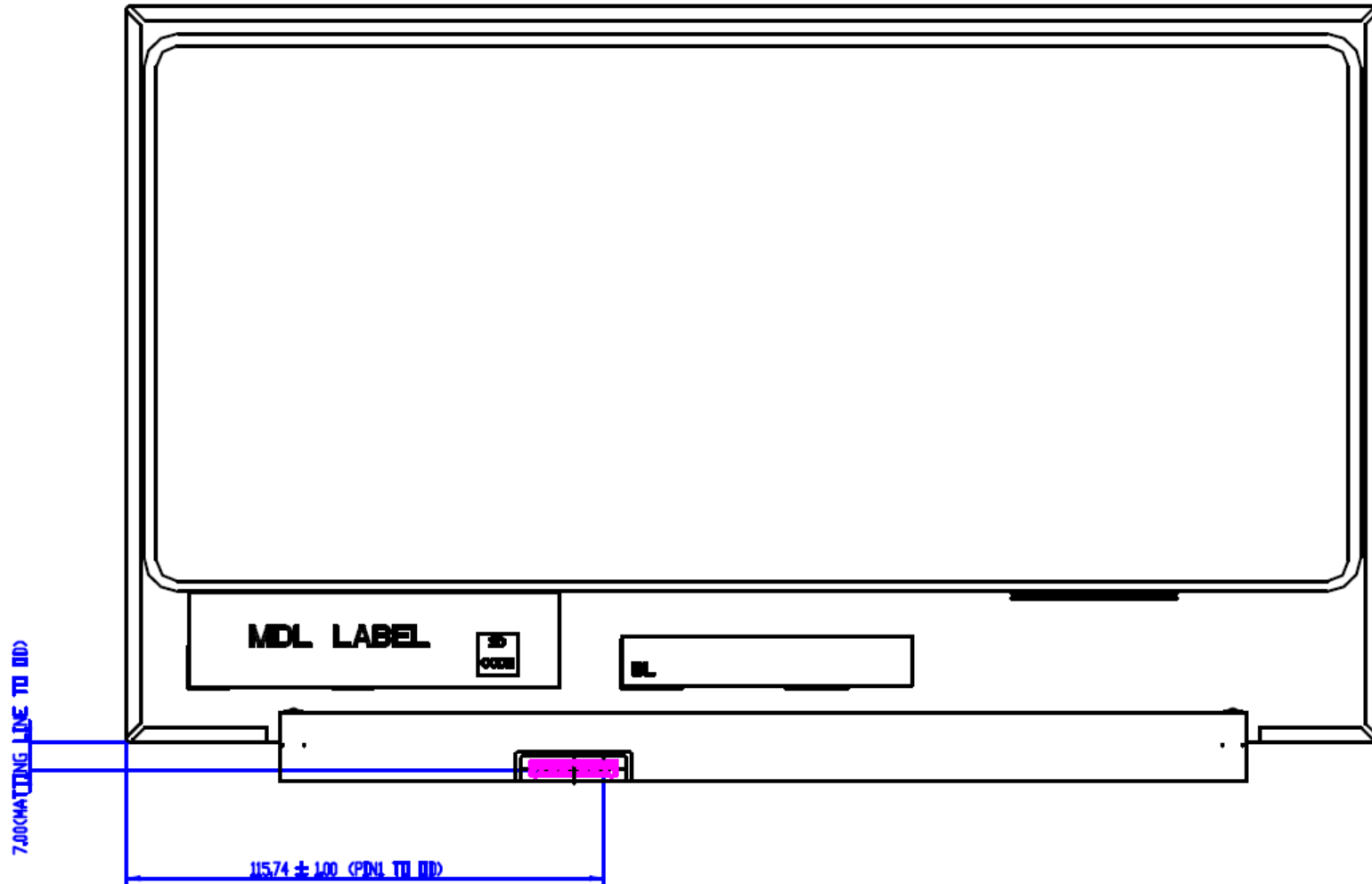




AUO Display+

Product Specification

G133HAN03.0



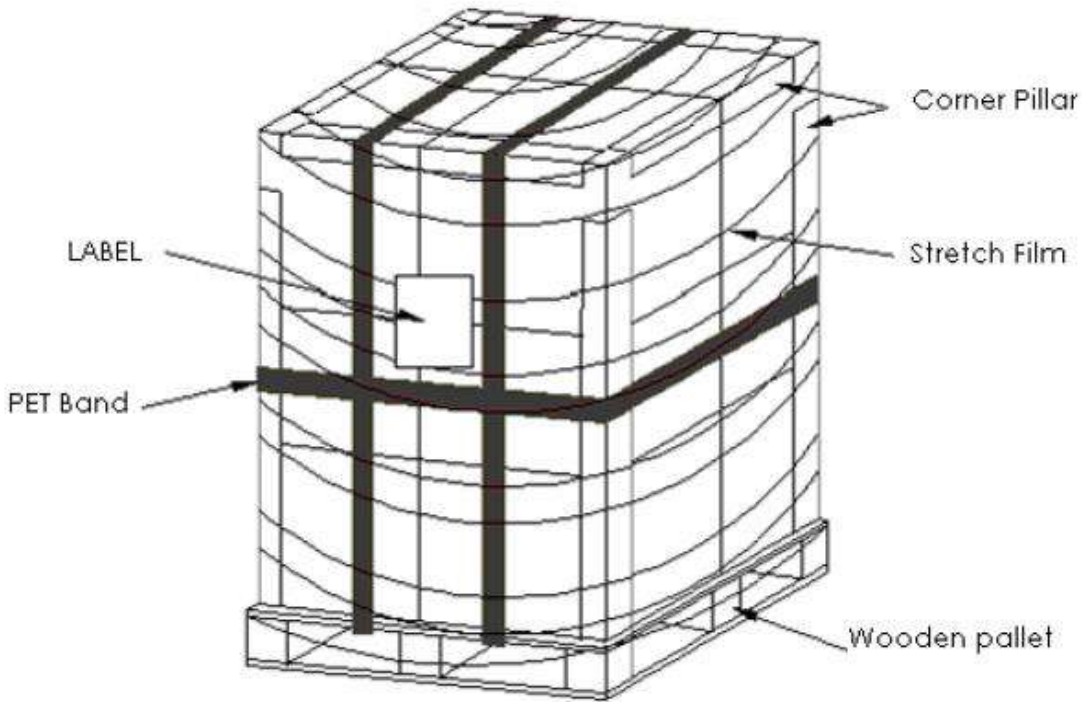
AUO Display+

9. Label and Packaging

9.1 Shipping Label (on the rear side of TFT-LCD display)



AUO Display+



Module by air _Max: (2 *2) *5 layers , one pallet put 20 boxes , total 800 pcs module

Module by sea _Max: (2 *2) *5 layers + (2 *2) *2 layers , two pallet put 28 boxes , total 1120 pcs module

Module by sea _HQ _Max: (2 *2) *5 layers+(2 *2) * 3 layers, two pallet put 32 boxes, total 1280 pcs module

Item	Specification			Remark
	Q'ty	Dimension	Weight (kg)	
Packing Material	1	550(L)mm x442(W)mm x 260(H)mm	3.5	TRAY +Box
Packing	40pcs/carton	548(L)mm x412(W)mm x 266(H)mm	14.8	with panel & cushion
Pallet	1	1150(L)mm x 910(W)mm x 132(H)mm	14	
Pallet after Packing	boxes/pallet	1150(L)mm x 910(W)mm x 143.2(H)mm	311	20 Carton



AUO Display+

10 Safety

10.1 Keen Edge Requirements

There will be no keen edges or corners on the display assembly that could cause injury.

10.2 Materials

10.2.1 Toxicity

There will be no carcinogenic materials used anywhere in the TFT-LCD module. If toxic materials are used, they will be reviewed and approved by the responsible AUO toxicologist.

10.2.2 Flammability

The printed circuit board will be made from material rated 94-V1 or better. The actual UL flammability rating will be printed on the printed circuit board.

10.3 Capacitors

If any polarized capacitors are used in the TFT-LCD module, provisions will be made to keep them from being inserted backwards.

10.4 International Safety Standard Compliance

The TFT-LCD Module will satisfy all requirements for compliance to IEC/UL 62368-1.